

Myosin XVI Polyclonal Antibody

Catalog No :	YT2951
Reactivity :	Human;Rat;Mouse;
Applications :	WB;ELISA;IHC
Target :	Myosin XVI
Gene Name :	MYO16
Protein Name :	Unconventional myosin-XVI
Human Gene Id :	23026
Human Swiss Prot No :	Q9Y6X6
Mouse Swiss Prot No :	Q5DU14
Immunogen :	Synthesized peptide derived from Myosin XVI . at AA range: 1050-1130
Specificity :	Myosin XVI Polyclonal Antibody detects endogenous levels of Myosin XVI protein.
Formulation :	Liquid in PBS containing 50% glycerol, 0.5% BSA and 0.02% sodium azide.
Source :	Polyclonal, Rabbit,IgG
Dilution :	WB 1:500-2000;IHC 1:50-300; ELISA 2000-20000
Purification :	The antibody was affinity-purified from rabbit antiserum by affinity-chromatography using epitope-specific immunogen.
Concentration :	1 mg/ml
Storage Stability :	-15°C to -25°C/1 year(Do not lower than -25°C)
Observed Band :	200kD

Background : function:Myosins are actin-based motor molecules with ATPase activity. Unconventional myosins serve in intracellular movements. Their highly divergent tails are presumed to bind to membranous compartments, which would be moved relative to actin filaments. May be involved in targeting of the catalytic subunit of protein phosphatase 1 during brain development.,similarity:Contains 1 IQ domain.,similarity:Contains 2 myosin head-like domains.,similarity:Contains 7 ANK repeats.,subcellular location:Found in puncta in soma and processes of astrocytes and dissociated cerebellar cells with the morphology of migrating granule cells.,subunit:Binds PPP1CA and/or PPP1CC. Binds F-actin in an ATP-sensitive manner.,

Function : function:Myosins are actin-based motor molecules with ATPase activity. Unconventional myosins serve in intracellular movements. Their highly divergent tails are presumed to bind to membranous compartments, which would be moved relative to actin filaments. May be involved in targeting of the catalytic subunit of protein phosphatase 1 during brain development.,similarity:Contains 1 IQ domain.,similarity:Contains 2 myosin head-like domains.,similarity:Contains 7 ANK repeats.,subcellular location:Found in puncta in soma and processes of astrocytes and dissociated cerebellar cells with the morphology of migrating granule cells.,subunit:Binds PPP1CA and/or PPP1CC. Binds F-actin in an ATP-sensitive manner.,

Subcellular Location : Cytoplasm . Found in puncta in soma and processes of astrocytes and dissociated cerebellar cells with the morphology of migrating granule cells. .

Expression : Amygdala,Brain,

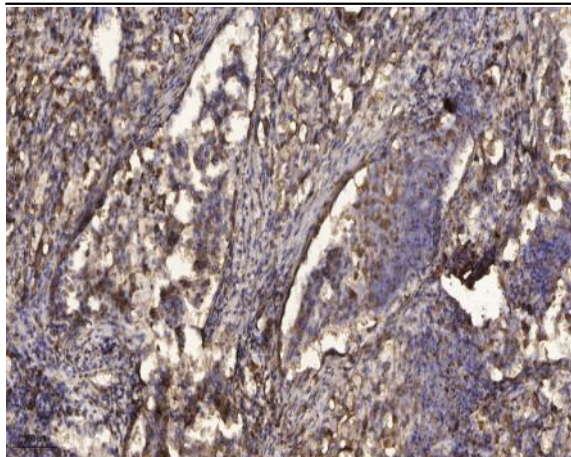
Sort : 10513

No4 : 1

Host : Rabbit

Modifications : Unmodified

Products Images



Immunohistochemical analysis of paraffin-embedded human Squamous cell carcinoma of lung. 1, Antibody was diluted at 1:200(4° overnight). 2, Tris-EDTA,pH9.0 was used for antigen retrieval. 3,Secondary antibody was diluted at 1:200(room temperature, 45min).