

## NTT5 Polyclonal Antibody

<b>Catalog No :</b>	YT3205
<b>Reactivity :</b>	Human;Rat;Mouse;
<b>Applications :</b>	IHC;IF;ELISA
<b>Target :</b>	NTT5
<b>Gene Name :</b>	SLC6A16
<b>Protein Name :</b>	Orphan sodium- and chloride-dependent neurotransmitter transporter NTT5
<b>Human Gene Id :</b>	28968
<b>Human Swiss Prot No :</b>	Q9GZN6
<b>Immunogen :</b>	The antiserum was produced against synthesized peptide derived from human SLC6A16. AA range:233-282
<b>Specificity :</b>	NTT5 Polyclonal Antibody detects endogenous levels of NTT5 protein.
<b>Formulation :</b>	Liquid in PBS containing 50% glycerol, 0.5% BSA and 0.02% sodium azide.
<b>Source :</b>	Polyclonal, Rabbit,IgG
<b>Dilution :</b>	IHC 1:100 - 1:300. ELISA: 1:40000.. IF 1:50-200
<b>Purification :</b>	The antibody was affinity-purified from rabbit antiserum by affinity-chromatography using epitope-specific immunogen.
<b>Concentration :</b>	1 mg/ml
<b>Storage Stability :</b>	-15°C to -25°C/1 year(Do not lower than -25°C)
<b>Molecularweight :</b>	82kD
<b>Background :</b>	SLC6A16 shows structural characteristics of an Na(+)- and Cl(-)-dependent neurotransmitter transporter, including 12 transmembrane (TM) domains,

---

intracellular N and C termini, and large extracellular loops containing multiple N-glycosylation sites.[supplied by OMIM, Mar 2008],

---

**Function :** similarity:Belongs to the sodium:neurotransmitter symporter (SNF) family.,tissue specificity:Highly expressed in peripheral tissues, particularly in testis, pancreas, and prostate.,

---

**Subcellular Location :** Membrane; Multi-pass membrane protein.

---

**Expression :** Highly expressed in peripheral tissues, particularly in testis, pancreas, and prostate.

---

**Sort :** 10987

---

**No4 :** 1

---

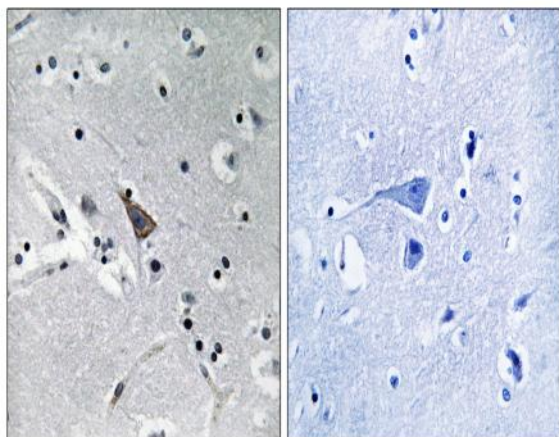
**Host :** Rabbit

---

**Modifications :** Unmodified

---

## Products Images



Immunohistochemistry analysis of paraffin-embedded human brain, using SLC6A16 Antibody. The picture on the right is blocked with the synthesized peptide.