

## NTR2 Polyclonal Antibody

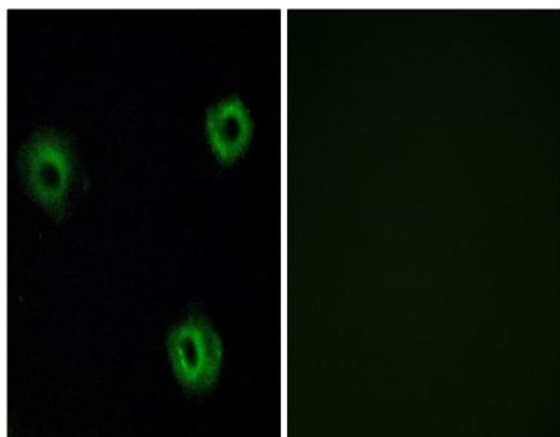
<b>Catalog No :</b>	YT3204
<b>Reactivity :</b>	Human;Mouse;Rat
<b>Applications :</b>	WB;IHC;IF;ELISA
<b>Target :</b>	NTR2
<b>Fields :</b>	>>Neuroactive ligand-receptor interaction
<b>Gene Name :</b>	NTSR2
<b>Protein Name :</b>	Neurotensin receptor type 2
<b>Human Gene Id :</b>	23620
<b>Human Swiss Prot No :</b>	O95665
<b>Mouse Swiss Prot No :</b>	P70310
<b>Rat Gene Id :</b>	64636
<b>Rat Swiss Prot No :</b>	Q63384
<b>Immunogen :</b>	The antiserum was produced against synthesized peptide derived from human NTR2. AA range:151-200
<b>Specificity :</b>	NTR2 Polyclonal Antibody detects endogenous levels of NTR2 protein.
<b>Formulation :</b>	Liquid in PBS containing 50% glycerol, 0.5% BSA and 0.02% sodium azide.
<b>Source :</b>	Polyclonal, Rabbit,IgG
<b>Dilution :</b>	WB 1:500 - 1:2000. IHC 1:100 - 1:300. IF 1:200 - 1:1000. ELISA: 1:40000. Not yet tested in other applications.
<b>Purification :</b>	The antibody was affinity-purified from rabbit antiserum by affinity-chromatography using epitope-specific immunogen.

---

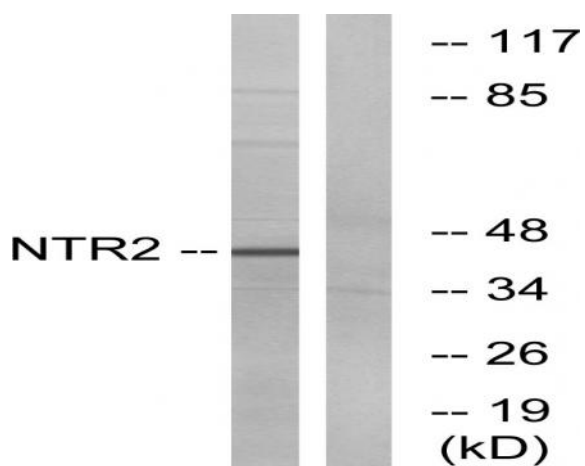
<b>Concentration :</b>	1 mg/ml
<b>Storage Stability :</b>	-15°C to -25°C/1 year(Do not lower than -25°C)
<b>Observed Band :</b>	45kD
<b>Cell Pathway :</b>	Neuroactive ligand-receptor interaction;
<b>Background :</b>	<p>The protein encoded by this gene belongs to the G protein-coupled receptor family that activate a phosphatidylinositol-calcium second messenger system. Binding and pharmacological studies demonstrate that this receptor binds neurotensin as well as several other ligands already described for neurotensin NT1 receptor. However, unlike NT1 receptor, this gene recognizes, with high affinity, levocabastine, a histamine H1 receptor antagonist previously shown to compete with neurotensin for low-affinity binding sites in brain. These activities suggest that this receptor may be of physiological importance and that a natural agonist for the receptor may exist. [provided by RefSeq, Jul 2008],</p>
<b>Function :</b>	<p>function:Receptor for the tridecapeptide neurotensin. It is associated with G proteins that activate a phosphatidylinositol-calcium second messenger system.,online information:Neurotensin receptor entry,similarity:Belongs to the G-protein coupled receptor 1 family.,</p>
<b>Subcellular Location :</b>	Cell membrane; Multi-pass membrane protein.
<b>Expression :</b>	Expressed in prostate (at protein level).
<b>Sort :</b>	10985
<b>No4 :</b>	1
<b>Host :</b>	Rabbit
<b>Modifications :</b>	Unmodified

---

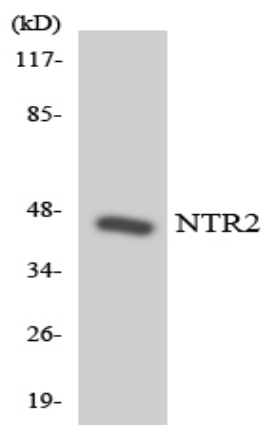
## Products Images



Immunofluorescence analysis of A549 cells, using NTR2 Antibody. The picture on the right is blocked with the synthesized peptide.



Western blot analysis of lysates from Jurkat cells, using NTR2 Antibody. The lane on the right is blocked with the synthesized peptide.



Western blot analysis of the lysates from HeLa cells using NTR2 antibody.