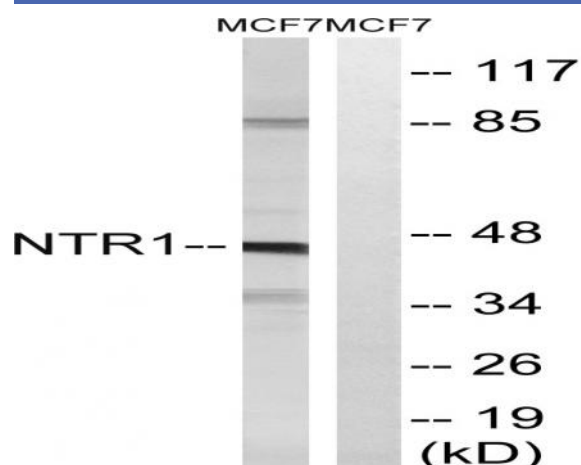


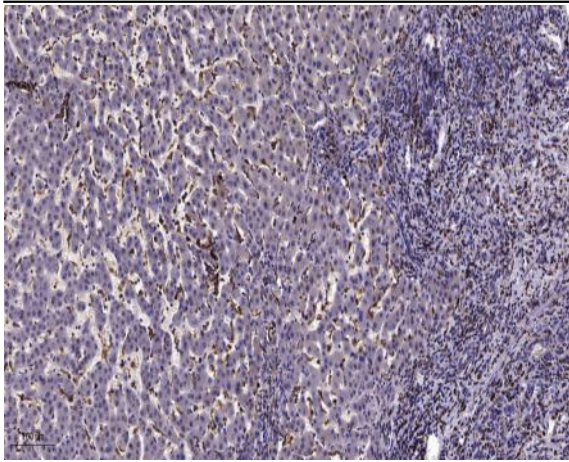
## NTR1 Polyclonal Antibody

<b>Catalog No :</b>	YT3203
<b>Reactivity :</b>	Human;Mouse
<b>Applications :</b>	WB;IHC;IF;ELISA
<b>Target :</b>	NTR1
<b>Fields :</b>	>>Calcium signaling pathway;>>Neuroactive ligand-receptor interaction
<b>Gene Name :</b>	NTSR1
<b>Protein Name :</b>	Neurotensin receptor type 1
<b>Human Gene Id :</b>	4923
<b>Human Swiss Prot No :</b>	P30989
<b>Mouse Gene Id :</b>	18216
<b>Mouse Swiss Prot No :</b>	O88319
<b>Immunogen :</b>	The antiserum was produced against synthesized peptide derived from human NTR1. AA range:181-230
<b>Specificity :</b>	NTR1 Polyclonal Antibody detects endogenous levels of NTR1 protein.
<b>Formulation :</b>	Liquid in PBS containing 50% glycerol, 0.5% BSA and 0.02% sodium azide.
<b>Source :</b>	Polyclonal, Rabbit,IgG
<b>Dilution :</b>	WB 1:500 - 1:2000. IHC 1:100 - 1:300. IF 1:200 - 1:1000. ELISA: 1:5000. Not yet tested in other applications.
<b>Purification :</b>	The antibody was affinity-purified from rabbit antiserum by affinity-chromatography using epitope-specific immunogen.
<b>Concentration :</b>	1 mg/ml

<b>Storage Stability :</b>	-15°C to -25°C/1 year(Do not lower than -25°C)
<b>Observed Band :</b>	46kD
<b>Cell Pathway :</b>	Calcium;Neuroactive ligand-receptor interaction;
<b>Background :</b>	Neurotensin receptor 1 belongs to the large superfamily of G-protein coupled receptors. NTSR1 mediates the multiple functions of neurotensin, such as hypotension, hyperglycemia, hypothermia, antinociception, and regulation of intestinal motility and secretion. [provided by RefSeq, Jul 2008],
<b>Function :</b>	function:Receptor for the tridecapeptide neurotensin. It is associated with G proteins that activate a phosphatidylinositol-calcium second messenger system.,online information:Neurotensin receptor entry,similarity:Belongs to the G-protein coupled receptor 1 family.,
<b>Subcellular Location :</b>	Cell membrane ; Multi-pass membrane protein . Membrane raft . Palmitoylation is required for localization at CAV1-enriched membrane rafts. .
<b>Expression :</b>	Expressed in prostate (at protein level). Detected in colon and peripheral blood mononuclear cells. Detected at very low levels in brain.
<b>Sort :</b>	10984
<b>No4 :</b>	1
<b>Host :</b>	Rabbit
<b>Modifications :</b>	Unmodified

## Products Images





Immunohistochemical analysis of paraffin-embedded human liver cancer. 1, Antibody was diluted at 1:200(4° overnight). 2, Tris-EDTA,pH9.0 was used for antigen retrieval. 3,Secondary antibody was diluted at 1:200(room temperature, 45min).