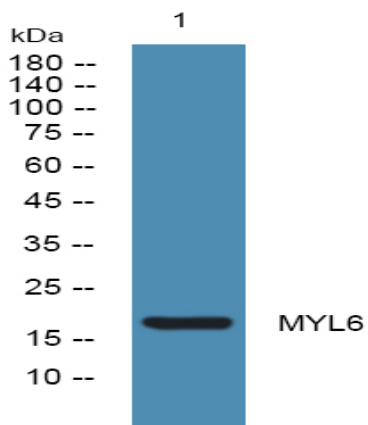


MYL6 Polyclonal Antibody

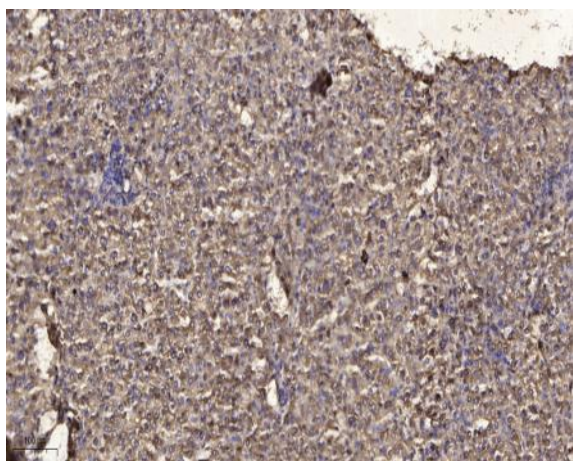
Catalog No :	YT2937
Reactivity :	Human;Mouse;Rat
Applications :	WB;IHC
Target :	MYL6
Fields :	>>Vascular smooth muscle contraction;>>Tight junction;>>Oxytocin signaling pathway
Gene Name :	MYL6
Protein Name :	Myosin light polypeptide 6
Human Gene Id :	4637
Human Swiss Prot No :	P60660
Mouse Gene Id :	17904
Mouse Swiss Prot No :	Q60605
Rat Gene Id :	362816
Rat Swiss Prot No :	Q64119
Immunogen :	Synthesized peptide derived from the Internal region of human MYL6.
Specificity :	MYL6 Polyclonal Antibody detects endogenous levels of MYL6 protein.
Formulation :	Liquid in PBS containing 50% glycerol, 0.5% BSA and 0.02% sodium azide.
Source :	Polyclonal, Rabbit,IgG
Dilution :	WB 1:500-2000;IHC 1:50-300

Purification :	The antibody was affinity-purified from rabbit antiserum by affinity-chromatography using epitope-specific immunogen.
Concentration :	1 mg/ml
Storage Stability :	-15°C to -25°C/1 year(Do not lower than -25°C)
Observed Band :	17kD
Cell Pathway :	Vascular smooth muscle contraction;
Background :	Myosin is a hexameric ATPase cellular motor protein. It is composed of two heavy chains, two nonphosphorylatable alkali light chains, and two phosphorylatable regulatory light chains. This gene encodes a myosin alkali light chain that is expressed in smooth muscle and non-muscle tissues. Genomic sequences representing several pseudogenes have been described and two transcript variants encoding different isoforms have been identified for this gene. [provided by RefSeq, Jul 2008],
Function :	function:Regulatory light chain of myosin. Does not bind calcium.,similarity:Contains 3 EF-hand domains.,subunit:Myosin is an hexamer of 2 heavy chains and 4 light chains.,
Subcellular Location :	cytosol,brush border,membrane,myosin complex,unconventional myosin complex,extracellular matrix,vesicle,extracellular exosome,
Expression :	B-cell lymphoma,Brain,Duodenum,Eye,Lung,Placenta,
Sort :	10474
No4 :	1
Host :	Rabbit
Modifications :	Unmodified

Products Images



Western blot analysis of lysates from Jurkat cells, primary antibody was diluted at 1:1000, 4° over night



Immunohistochemical analysis of paraffin-embedded human liver cancer. 1, Antibody was diluted at 1:200(4° overnight). 2, Tris-EDTA,pH9.0 was used for antigen retrieval. 3,Secondary antibody was diluted at 1:200(room temperature, 45min).