

MYH15 Polyclonal Antibody

Catalog No :	YT2934
Reactivity :	Human
Applications :	WB;IHC
Target :	MYH15
Gene Name :	MYH15
Protein Name :	Myosin-15
Human Gene Id :	22989
Human Swiss Prot No :	Q9Y2K3
Immunogen :	The antiserum was produced against synthesized peptide derived from human MYH15. AA range:624-673
Specificity :	MYH15 Polyclonal Antibody detects endogenous levels of MYH15 protein.
Formulation :	Liquid in PBS containing 50% glycerol, 0.5% BSA and 0.02% sodium azide.
Source :	Polyclonal, Rabbit,IgG
Dilution :	WB 1:500-2000;IHC 1:50-300
Purification :	The antibody was affinity-purified from rabbit antiserum by affinity-chromatography using epitope-specific immunogen.
Concentration :	1 mg/ml
Storage Stability :	-15°C to -25°C/1 year(Do not lower than -25°C)
Observed Band :	225kD
Cell Pathway :	Tight junction;Viral myocarditis;

Background : domain:The rodlike tail sequence is highly repetitive, showing cycles of a 28-residue repeat pattern composed of 4 heptapeptides, characteristic for alpha-helical coiled coils.,function:Muscle contraction.,similarity:Contains 1 IQ domain.,similarity:Contains 1 myosin head-like domain.,subcellular location:Thick filaments of the myofibrils.,subunit:Muscle myosin is a hexameric protein that consists of 2 heavy chain subunits (MHC), 2 alkali light chain subunits (MLC) and 2 regulatory light chain subunits (MLC-2).,

Function : domain:The rodlike tail sequence is highly repetitive, showing cycles of a 28-residue repeat pattern composed of 4 heptapeptides, characteristic for alpha-helical coiled coils.,function:Muscle contraction.,similarity:Contains 1 IQ domain.,similarity:Contains 1 myosin head-like domain.,subcellular location:Thick filaments of the myofibrils.,subunit:Muscle myosin is a hexameric protein that consists of 2 heavy chain subunits (MHC), 2 alkali light chain subunits (MLC) and 2 regulatory light chain subunits (MLC-2).,

Subcellular Location : Cytoplasm, myofibril. Thick filaments of the myofibrils.

Expression : Brain,Epithelium,

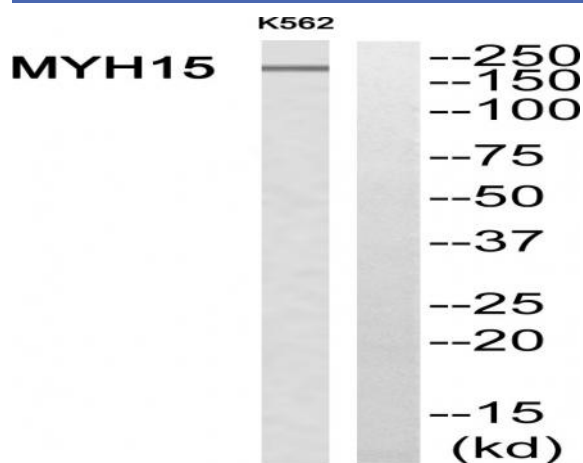
Sort : 10460

No4 : 1

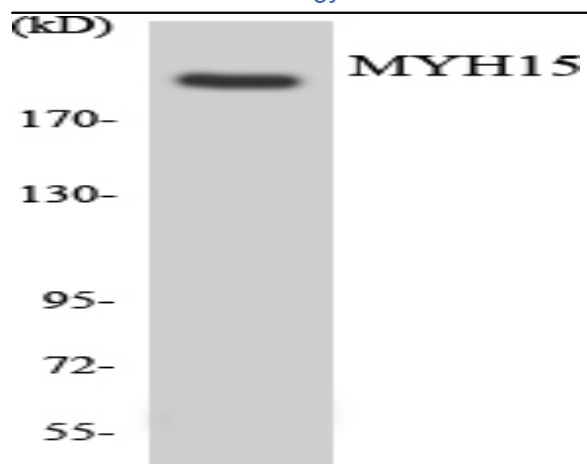
Host : Rabbit

Modifications : Unmodified

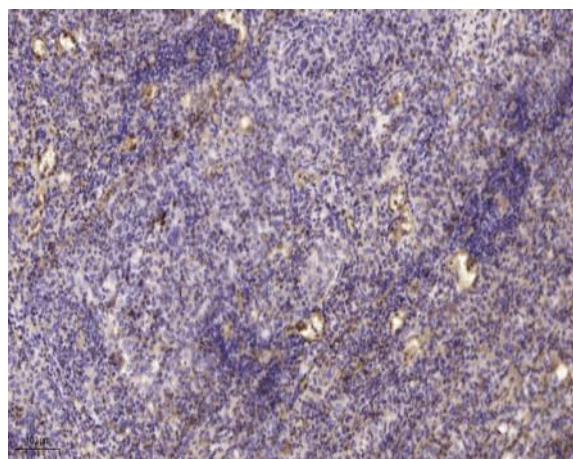
Products Images



Western blot analysis of MYH15 Antibody. The lane on the right is blocked with the MYH15 peptide.



Western blot analysis of the lysates from Jurkat cells using MYH15 antibody.



Immunohistochemical analysis of paraffin-embedded human lung cancer. 1, Antibody was diluted at 1:200(4° overnight). 2, Tris-EDTA,pH9.0 was used for antigen retrieval. 3,Secondary antibody was diluted at 1:200(room temperature, 45min).