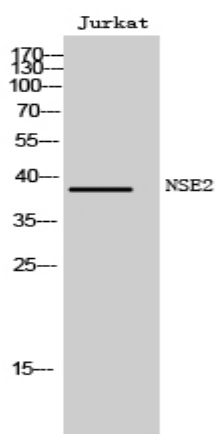


NSE2 Polyclonal Antibody

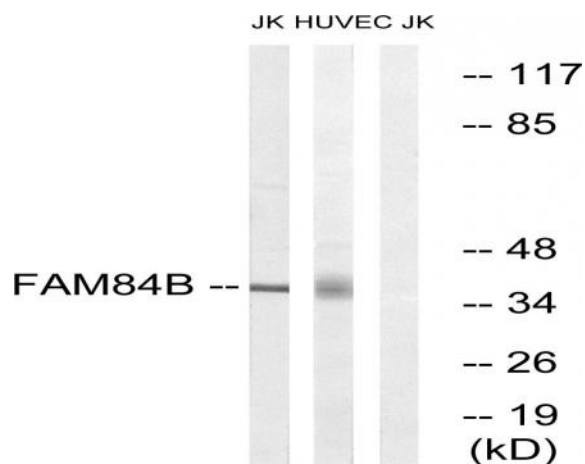
Catalog No :	YT3194
Reactivity :	Human;Rat;Mouse;
Applications :	WB;IHC;IF;ELISA
Target :	NSE2
Gene Name :	FAM84B
Protein Name :	Protein FAM84B
Human Gene Id :	157638
Human Swiss Prot No :	Q96KN1
Immunogen :	The antiserum was produced against synthesized peptide derived from human FAM84B. AA range:11-60
Specificity :	NSE2 Polyclonal Antibody detects endogenous levels of NSE2 protein.
Formulation :	Liquid in PBS containing 50% glycerol, 0.5% BSA and 0.02% sodium azide.
Source :	Polyclonal, Rabbit,IgG
Dilution :	WB 1:500 - 1:2000. IHC 1:100 - 1:300. ELISA: 1:10000.. IF 1:50-200
Purification :	The antibody was affinity-purified from rabbit antiserum by affinity-chromatography using epitope-specific immunogen.
Concentration :	1 mg/ml
Storage Stability :	-15°C to -25°C/1 year(Do not lower than -25°C)
Observed Band :	38kD
Background :	similarity:Belongs to the FAM84 family.,tissue specificity:Expressed in esophageal squamous cell carcinomas.,

Function :	similarity:Belongs to the FAM84 family.,tissue specificity:Expressed in esophageal squamous cell carcinomas.,
Subcellular Location :	cytoplasm,plasma membrane,
Expression :	Expressed in esophageal squamous cell carcinomas.
Sort :	10972
No4 :	1
Host :	Rabbit
Modifications :	Unmodified

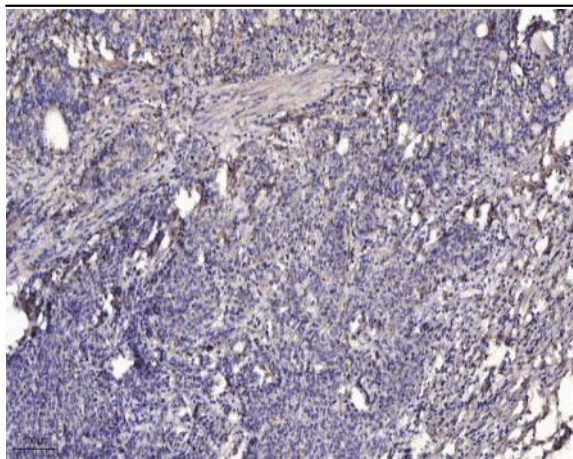
Products Images



Western Blot analysis of Jurkat cells using NSE2 Polyclonal Antibody



Western blot analysis of lysates from Jurkat and HUVEC cells, using FAM84B Antibody. The lane on the right is blocked with the synthesized peptide.



Immunohistochemical analysis of paraffin-embedded human Gastric adenocarcinoma. 1, Antibody was diluted at 1:200(4° overnight). 2, Tris-EDTA,pH9.0 was used for antigen retrieval. 3,Secondary antibody was diluted at 1:200(room temperature, 45min).