

RRAS Polyclonal Antibody

Catalog No :	YN0065
Reactivity :	Human;Mouse;Rat
Applications :	WB;ELISA
Target :	RRAS
Fields :	>>MAPK signaling pathway;>>Ras signaling pathway;>>Rap1 signaling pathway;>>cAMP signaling pathway;>>Phospholipase D signaling pathway;>>Mitophagy - animal;>>Autophagy - animal;>>Cellular senescence;>>Axon guidance;>>Apelin signaling pathway;>>C-type lectin receptor signaling pathway;>>Regulation of actin cytoskeleton;>>Salmonella infection;>>Proteoglycans in cancer
Gene Name :	RRAS
Protein Name :	Ras-related protein R-Ras (p23)
Human Gene Id :	6237
Human Swiss Prot No :	P10301
Mouse Swiss Prot No :	P10833
Rat Swiss Prot No :	D3Z8L7
Immunogen :	Synthesized peptide derived from human protein . at AA range: 1-80
Specificity :	RRAS Polyclonal Antibody detects endogenous levels of protein.
Formulation :	Liquid in PBS containing 50% glycerol, and 0.02% sodium azide.
Source :	Polyclonal, Rabbit,IgG
Dilution :	WB 1:500-2000 ELISA 1:5000-20000
Purification :	The antibody was affinity-purified from rabbit antiserum by affinity-

chromatography using epitope-specific immunogen.

Concentration : 1 mg/ml

Storage Stability : -15°C to -25°C/1 year(Do not lower than -25°C)

Observed Band : 23kD

Cell Pathway : MAPK_ERK_Growth;MAPK_G_Protein;Tight junction;Regulates Actin and Cytoskeleton;

Background : The protein encoded by this gene is a small GTPase involved in diverse processes including angiogenesis, vascular homeostasis and regeneration, cell adhesion, and neuronal axon guidance. Mutations in this gene are found in many invasive cancers. [provided by RefSeq, Jul 2015],

Function : function:Regulates the organization of the actin cytoskeleton.,similarity:Belongs to the small GTPase superfamily. Ras family.,subcellular location:Inner surface of plasma membrane possibly with attachment requiring acylation of the C-terminal cysteine (By similarity with RAS).,subunit:Interacts with PLCE1.,

Subcellular Location : Cell membrane ; Lipid-anchor ; Cytoplasmic side . Inner surface of plasma membrane possibly with attachment requiring acylation of the C-terminal cysteine (By similarity with RAS).

Expression : Adipocyte,Brain,Uterus,

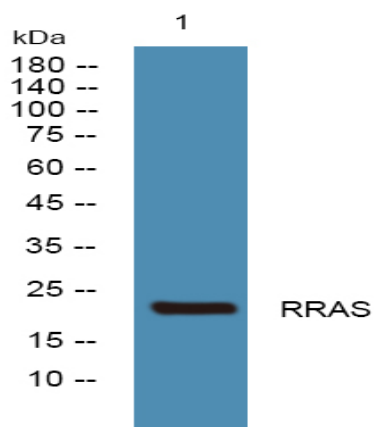
Sort : 21401

No4 : 1

Host : Rabbit

Modifications : Unmodified

Products Images



Western blot analysis of lysates from U2OS cells, primary antibody was diluted at 1:1000, 4° over night