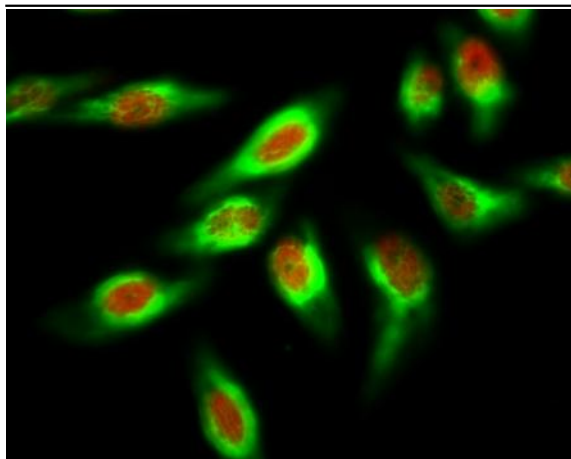


mtTFA Polyclonal Antibody

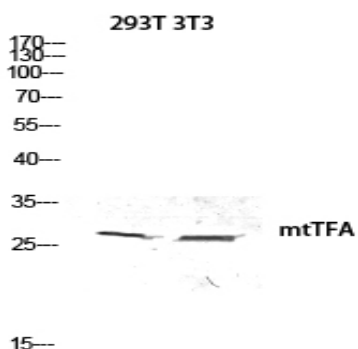
Catalog No :	YT2916
Reactivity :	Human;Rat;Mouse;Bovine
Applications :	WB;IHC;IF;ELISA
Target :	mtTFA
Fields :	>>Apelin signaling pathway;>>Huntington disease
Gene Name :	TFAM
Protein Name :	Transcription factor A mitochondrial
Human Gene Id :	7019
Human Swiss Prot No :	Q00059
Mouse Swiss Prot No :	P40630
Immunogen :	The antiserum was produced against synthesized peptide derived from human TFAM. AA range:131-180
Specificity :	mtTFA Polyclonal Antibody detects endogenous levels of mtTFA protein.
Formulation :	Liquid in PBS containing 50% glycerol, 0.5% BSA and 0.02% sodium azide.
Source :	Polyclonal, Rabbit,IgG
Dilution :	WB 1:500-2000;IHC 1:100 - 1:300. IF 1:200 - 1:1000. ELISA: 1:20000. Not yet tested in other applications.
Purification :	The antibody was affinity-purified from rabbit antiserum by affinity-chromatography using epitope-specific immunogen.
Concentration :	1 mg/ml
Storage Stability :	-15°C to -25°C/1 year(Do not lower than -25°C)

Observed Band :	22kd
Cell Pathway :	Stem cell pathway; Protein_Acetylation
Background :	This gene encodes a key mitochondrial transcription factor containing two high mobility group motifs. The encoded protein also functions in mitochondrial DNA replication and repair. Sequence polymorphisms in this gene are associated with Alzheimer's and Parkinson's diseases. There are pseudogenes for this gene on chromosomes 6, 7, and 11. Alternative splicing results in multiple transcript variants. [provided by RefSeq, Aug 2012],
Function :	function:Involved in mitochondrial transcription regulation. Required for accurate and efficient promoter recognition by the mitochondrial RNA polymerase. Activates transcription by binding immediately upstream of transcriptional start sites. Is able to unwind and bend DNA.,similarity:Contains 2 HMG box DNA-binding domains.,subunit:Interacts with TFB1M and TFB2M.,
Subcellular Location :	Mitochondrion . Mitochondrion matrix, mitochondrion nucleoid .
Expression :	Lymphocyte,Pooled,Uterus,
Tag :	orthogonal
Sort :	1
No4 :	1
Host :	Rabbit
Modifications :	Unmodified

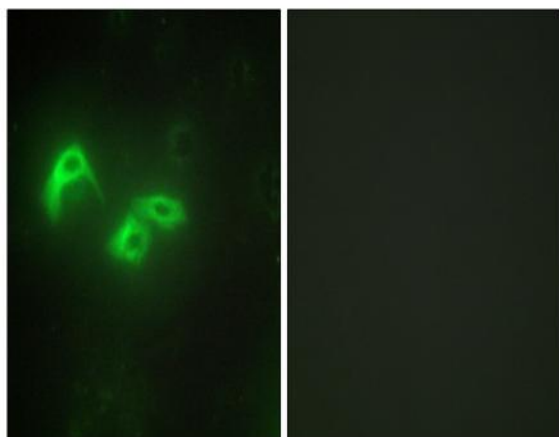
Products Images



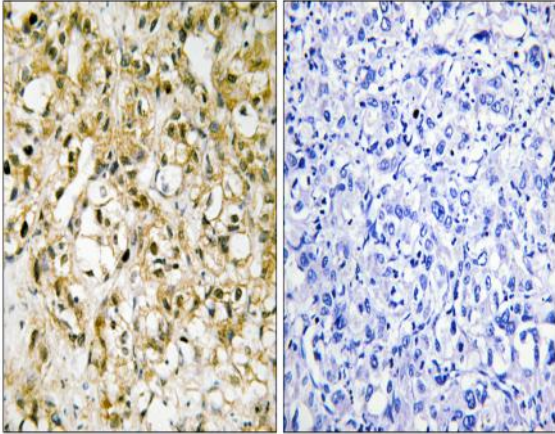
Immunofluorescence analysis of HeLa cell. 1, mtTFA Polyclonal Antibody (Green) was diluted at 1:200 (4° overnight). Histone H3 (Tri Methyl Lys36) Monoclonal Antibody (Q12) (Red) was diluted at 1:200 (4° overnight). 2, Goat Anti Rabbit Alexa Fluor 594 Catalog: RS3611 was diluted at 1:1000 (room temperature, 50min). Goat Anti Mouse Alexa Fluor 488 Catalog: RS3208 was diluted at 1:1000 (room temperature, 50min).



Western blot analysis of 293T 3T3 lysis using mtTFA antibody. Antibody was diluted at 1:500



Immunofluorescence analysis of HepG2 cells, using TFAM Antibody. The picture on the right is blocked with the synthesized peptide.



Immunohistochemistry analysis of paraffin-embedded human liver carcinoma tissue, using TFAM Antibody. The picture on the right is blocked with the synthesized peptide.