

Nop132 Polyclonal Antibody

| | |
|------------------------------|---|
| Catalog No : | YT3165 |
| Reactivity : | Human;Rat;Mouse; |
| Applications : | WB;IHC;IF;ELISA |
| Target : | Nop132 |
| Gene Name : | NOL8 |
| Protein Name : | Nucleolar protein 8 |
| Human Gene Id : | 55035 |
| Human Swiss Prot No : | Q76FK4 |
| Mouse Swiss Prot No : | Q3UHX0 |
| Immunogen : | The antiserum was produced against synthesized peptide derived from human NOL8. AA range:1118-1167 |
| Specificity : | Nop132 Polyclonal Antibody detects endogenous levels of Nop132 protein. |
| Formulation : | Liquid in PBS containing 50% glycerol, 0.5% BSA and 0.02% sodium azide. |
| Source : | Polyclonal, Rabbit,IgG |
| Dilution : | WB 1:500 - 1:2000. IHC 1:100 - 1:300. ELISA: 1:20000.. IF 1:50-200 |
| Purification : | The antibody was affinity-purified from rabbit antiserum by affinity-chromatography using epitope-specific immunogen. |
| Concentration : | 1 mg/ml |
| Storage Stability : | -15°C to -25°C/1 year(Do not lower than -25°C) |
| Observed Band : | 130kD |

Background : NOL8 binds Ras-related GTP-binding proteins (see MIM 608267) and plays a role in cell growth (Sekiguchi et al., 2004 [PubMed 14660641]).[supplied by OMIM, Mar 2008],

Function : function:Plays an essential role in the survival of diffuse-type gastric cancer cells. May be involved in regulation of gene expression at the post-transcriptional level or in ribosome biogenesis in cancer cells.,induction:Up-regulated in diffuse-type gastric cancers.,PTM:Phosphorylated.,similarity:Contains 1 RRM (RNA recognition motif) domain.,subunit:Interacts with the GTP form of RRAGA, RRAGC and RRAGD. Interacts with NIP7.,tissue specificity:Expressed in various diffuse-type gastric cancers. Detected at lower levels in skeletal muscle.,

Subcellular Location : Nucleus, nucleolus . Localizes in the nucleolar-organizing region during ribosome biogenesis.

Expression : Expressed in various diffuse-type gastric cancers. Detected at lower levels in skeletal muscle.

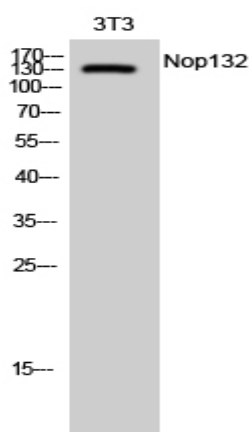
Sort : 10922

No4 : 1

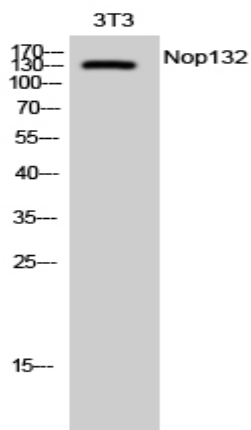
Host : Rabbit

Modifications : Unmodified

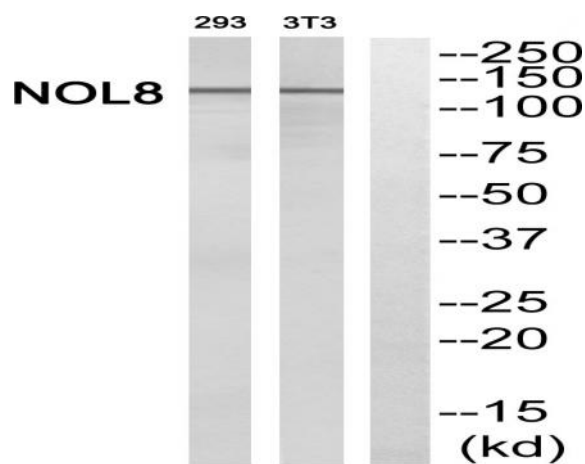
Products Images



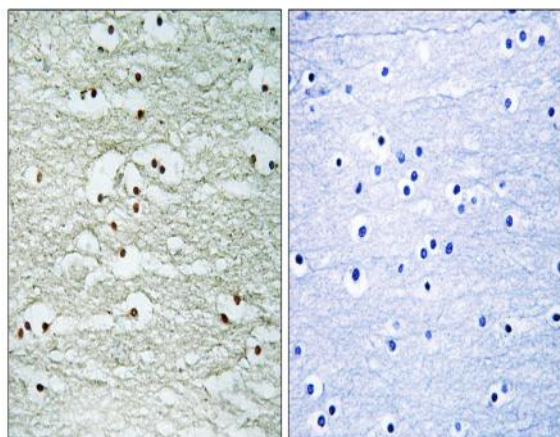
Western Blot analysis of 3T3 cells using Nop132 Polyclonal Antibody diluted at 1:1000 cells nucleus extracted by Minute TM Cytoplasmic and Nuclear Fractionation kit (SC-003, Inventibiotech, MN, USA).



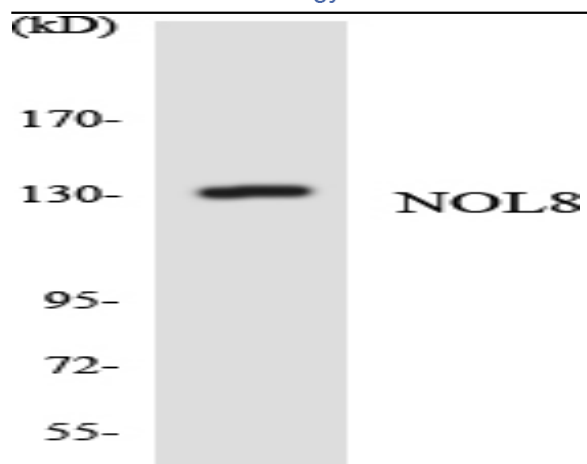
Western Blot analysis of NIH-3T3 cells using Nop132 Polyclonal Antibody diluted at 1:1000 cells nucleus extracted by Minute TM Cytoplasmic and Nuclear Fractionation kit (SC-003, Inventbiotech, MN, USA).



Western blot analysis of NOL8 Antibody. The lane on the right is blocked with the NOL8 peptide.



Immunohistochemistry analysis of paraffin-embedded human brain, using NOL8 Antibody. The lane on the right is blocked with the NOL8 peptide.



Western blot analysis of the lysates from HepG2 cells using NOL8 antibody.