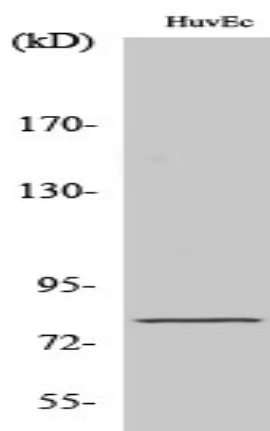


NOL10 Polyclonal Antibody

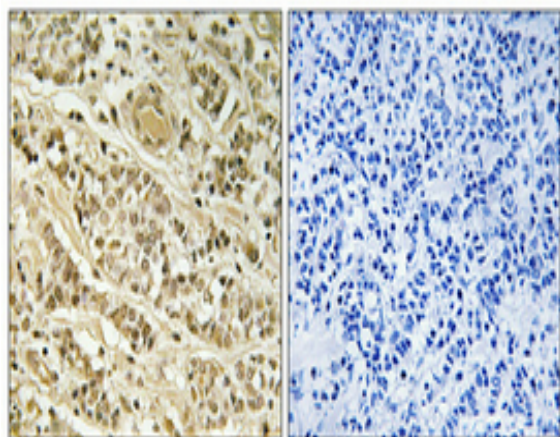
Catalog No :	YT3163
Reactivity :	Human;Rat;Mouse;
Applications :	WB;IHC;IF;ELISA
Target :	NOL10
Gene Name :	NOL10
Protein Name :	Nucleolar protein 10
Human Gene Id :	79954
Human Swiss Prot No :	Q9BSC4
Mouse Swiss Prot No :	Q5RJG1
Immunogen :	The antiserum was produced against synthesized peptide derived from human NOL10. AA range:639-688
Specificity :	NOL10 Polyclonal Antibody detects endogenous levels of NOL10 protein.
Formulation :	Liquid in PBS containing 50% glycerol, 0.5% BSA and 0.02% sodium azide.
Source :	Polyclonal, Rabbit,IgG
Dilution :	WB 1:500 - 1:2000. IHC 1:100 - 1:300. ELISA: 1:40000.. IF 1:50-200
Purification :	The antibody was affinity-purified from rabbit antiserum by affinity-chromatography using epitope-specific immunogen.
Concentration :	1 mg/ml
Storage Stability :	-15°C to -25°C/1 year(Do not lower than -25°C)
Observed Band :	80kD

Background :	similarity:Belongs to the WD repeat NOL10/ENP2 family.,similarity:Contains 5 WD repeats.,
Function :	similarity:Belongs to the WD repeat NOL10/ENP2 family.,similarity:Contains 5 WD repeats.,
Subcellular Location :	Nucleus, nucleolus .
Expression :	Embryo,Placenta,
Sort :	10920
No4 :	1
Host :	Rabbit
Modifications :	Unmodified

Products Images



Western Blot analysis of various cells using NOL10 Polyclonal Antibody cells nucleus extracted by Minute TM Cytoplasmic and Nuclear Fractionation kit (SC-003, Inventbiotech, MN, USA).



Immunohistochemical analysis of paraffin-embedded Human breast cancer. Antibody was diluted at 1:100(4° overnight). High-pressure and temperature Tris-EDTA,pH8.0 was used for antigen retrieval. Negative contrl (right) obtained from antibody was pre-absorbed by immunogen peptide.

