

## Nkx-2.6 Polyclonal Antibody

<b>Catalog No :</b>	YT3140
<b>Reactivity :</b>	Human;Rat;Mouse;
<b>Applications :</b>	WB;ELISA
<b>Target :</b>	Nkx-2.6
<b>Gene Name :</b>	NKX2-6
<b>Protein Name :</b>	Homeobox protein Nkx-2.6
<b>Human Gene Id :</b>	18092
<b>Human Swiss Prot No :</b>	A6NCS4
<b>Mouse Swiss Prot No :</b>	P43688
<b>Immunogen :</b>	The antiserum was produced against synthesized peptide derived from human NKX26. AA range:91-140
<b>Specificity :</b>	Nkx-2.6 Polyclonal Antibody detects endogenous levels of Nkx-2.6 protein.
<b>Formulation :</b>	Liquid in PBS containing 50% glycerol, 0.5% BSA and 0.02% sodium azide.
<b>Source :</b>	Polyclonal, Rabbit,IgG
<b>Dilution :</b>	WB 1:500 - 1:2000. ELISA: 1:40000. Not yet tested in other applications.
<b>Purification :</b>	The antibody was affinity-purified from rabbit antiserum by affinity-chromatography using epitope-specific immunogen.
<b>Concentration :</b>	1 mg/ml
<b>Storage Stability :</b>	-15°C to -25°C/1 year(Do not lower than -25°C)
<b>Observed Band :</b>	28kD

**Background :** This gene encodes a homeobox-containing protein that belongs to the NK-2 homeobox family. This protein is a vertebrate homolog of *Drosophila* homeobox-containing protein called 'tinman', which has been shown to be essential for development of the heart-like dorsal vessel. In conjunction with related gene, NKX2-5, this gene may play a role in both pharyngeal and cardiac embryonic development. Mutations in this gene are associated with persistent truncus arteriosus.[provided by RefSeq, Aug 2011],

**Subcellular Location :** Nucleus .

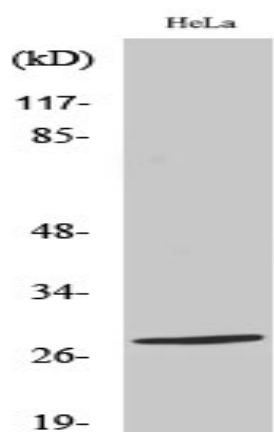
**Sort :** 10875

**No4 :** 1

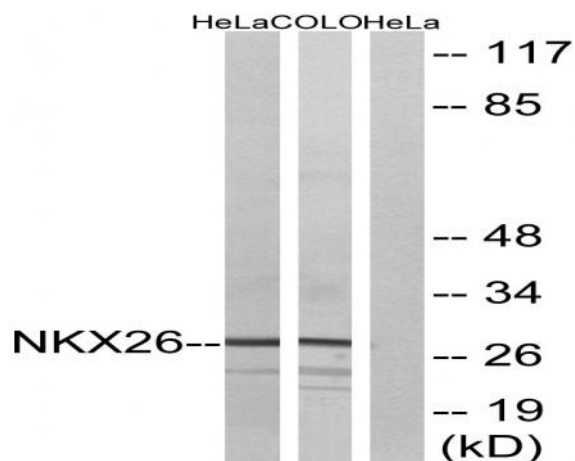
**Host :** Rabbit

**Modifications :** Unmodified

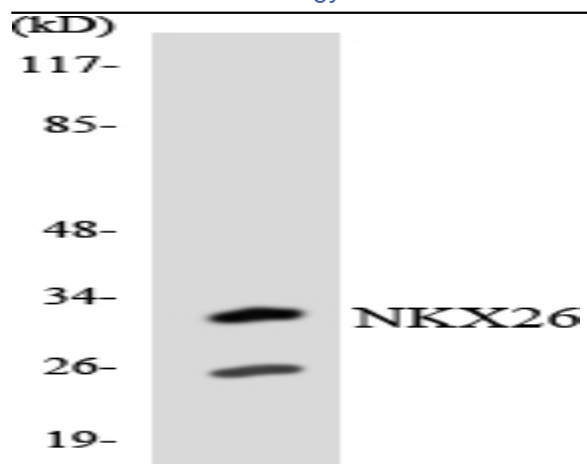
## Products Images



Western blot analysis of various cells using Nkx-2.6 Polyclonal Antibody diluted at 1:500



Western blot analysis of lysates from HeLa and COLO cells, using NKX26 Antibody. The lane on the right is blocked with the synthesized peptide.



Western blot analysis of the lysates from Jurkat cells using NKX26 antibody.