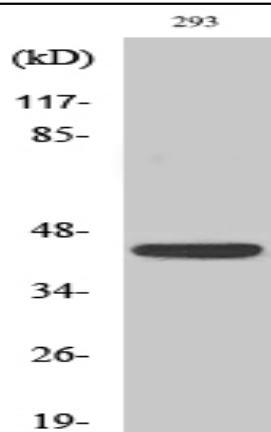


NKp46 Polyclonal Antibody

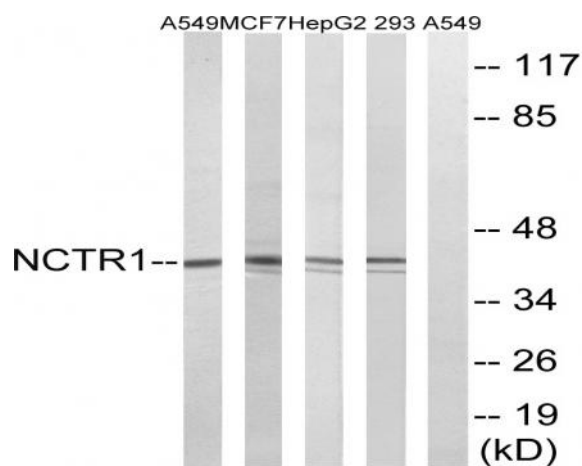
Catalog No :	YT3136
Reactivity :	Human;Rat;Mouse;
Applications :	WB;ELISA
Target :	NKp46
Fields :	>>Natural killer cell mediated cytotoxicity
Gene Name :	NCR1
Protein Name :	Natural cytotoxicity triggering receptor 1
Human Gene Id :	9437
Human Swiss Prot No :	O76036
Mouse Swiss Prot No :	Q8C567
Immunogen :	The antiserum was produced against synthesized peptide derived from human NCR1. AA range:145-194
Specificity :	NKp46 Polyclonal Antibody detects endogenous levels of NKp46 protein.
Formulation :	Liquid in PBS containing 50% glycerol, 0.5% BSA and 0.02% sodium azide.
Source :	Polyclonal, Rabbit,IgG
Dilution :	WB 1:500 - 1:2000. ELISA: 1:10000. Not yet tested in other applications.
Purification :	The antibody was affinity-purified from rabbit antiserum by affinity-chromatography using epitope-specific immunogen.
Concentration :	1 mg/ml
Storage Stability :	-15°C to -25°C/1 year(Do not lower than -25°C)

Observed Band :	40kD
Cell Pathway :	Natural killer cell mediated cytotoxicity;
Background :	function:Cytotoxicity-activating receptor that may contribute to the increased efficiency of activated natural killer (NK) cells to mediate tumor cell lysis.,PTM:N-glycosylated.,PTM:O-glycosylated.,similarity:Belongs to the natural cytotoxicity receptor (NCR) family.,similarity:Contains 2 Ig-like (immunoglobulin-like) domains.,subunit:Interacts with CD3Z and FCER1G.,tissue specificity:Selectively expressed by both resting and activated NK cells.,
Function :	function:Cytotoxicity-activating receptor that may contribute to the increased efficiency of activated natural killer (NK) cells to mediate tumor cell lysis.,PTM:N-glycosylated.,PTM:O-glycosylated.,similarity:Belongs to the natural cytotoxicity receptor (NCR) family.,similarity:Contains 2 Ig-like (immunoglobulin-like) domains.,subunit:Interacts with CD3Z and FCER1G.,tissue specificity:Selectively expressed by both resting and activated NK cells.,
Subcellular Location :	Cell membrane ; Single-pass type I membrane protein .
Expression :	Selectively expressed by both resting and activated NK cells.
Tag :	hot
Sort :	10870
No4 :	1
Host :	Rabbit
Modifications :	Unmodified

Products Images



Western Blot analysis of various cells using NKp46 Polyclonal Antibody cells nucleus extracted by Minute TM Cytoplasmic and Nuclear Fractionation kit (SC-003, Inventbiotech, MN, USA).



Western blot analysis of lysates from 293, HepG2, MCF-7, and A549 cells, using NCR1 Antibody. The lane on the right is blocked with the synthesized peptide.