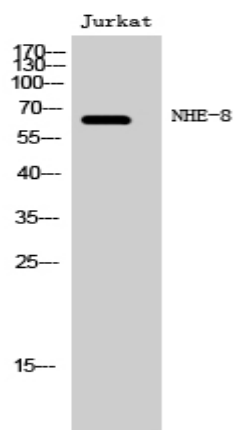


NHE-8 Polyclonal Antibody

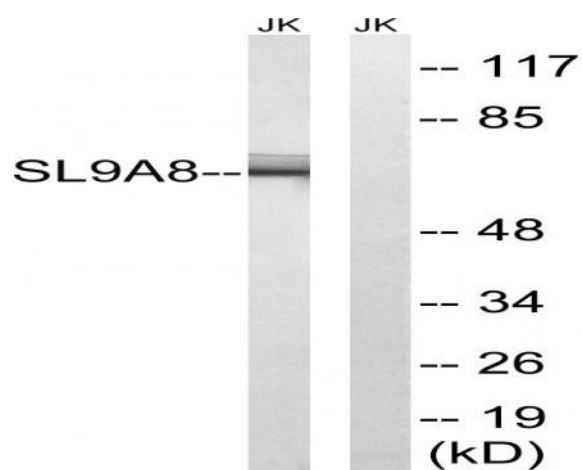
Catalog No :	YT3119
Reactivity :	Human;Mouse;Rat
Applications :	WB;IHC;IF;ELISA
Target :	NHE-8
Gene Name :	SLC9A8
Protein Name :	Sodium/hydrogen exchanger 8
Human Gene Id :	23315
Human Swiss Prot No :	Q9Y2E8
Mouse Gene Id :	77031
Mouse Swiss Prot No :	Q8R4D1
Rat Gene Id :	311651
Rat Swiss Prot No :	Q4L208
Immunogen :	The antiserum was produced against synthesized peptide derived from human SLC9A8. AA range:451-500
Specificity :	NHE-8 Polyclonal Antibody detects endogenous levels of NHE-8 protein.
Formulation :	Liquid in PBS containing 50% glycerol, 0.5% BSA and 0.02% sodium azide.
Source :	Polyclonal, Rabbit,IgG
Dilution :	WB 1:500 - 1:2000.IHC:1:50-300 ELISA: 1:20000.. IF 1:50-200
Purification :	The antibody was affinity-purified from rabbit antiserum by affinity-chromatography using epitope-specific immunogen.

Concentration :	1 mg/ml
Storage Stability :	-15°C to -25°C/1 year(Do not lower than -25°C)
Observed Band :	65kD
Background :	Sodium-hydrogen exchangers (NHEs), such as SLC9A8, are integral transmembrane proteins that exchange extracellular Na ⁺ for intracellular H ⁺ . NHEs have multiple functions, including intracellular pH homeostasis, cell volume regulation, and electroneutral NaCl absorption in epithelia (Xu et al., 2008 [PubMed 18209477]).[supplied by OMIM, Apr 2009],
Function :	function:Involved in pH regulation to eliminate acids generated by active metabolism or to counter adverse environmental conditions. Major proton extruding system driven by the inward sodium ion chemical gradient. Plays an important role in signal transduction.,similarity:Belongs to the monovalent cation:proton antiporter 1 (CPA1) transporter (TC 2.A.36) family.,tissue specificity:Ubiquitous. Strongly expressed in skeletal muscle and kidney.,
Subcellular Location :	Golgi apparatus membrane ; Multi-pass membrane protein .
Expression :	Ubiquitous. Strongly expressed in skeletal muscle and kidney.
Sort :	10840
No4 :	1
Host :	Rabbit
Modifications :	Unmodified

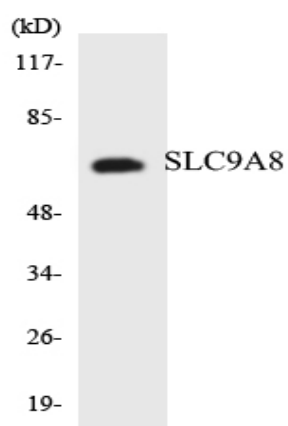
Products Images



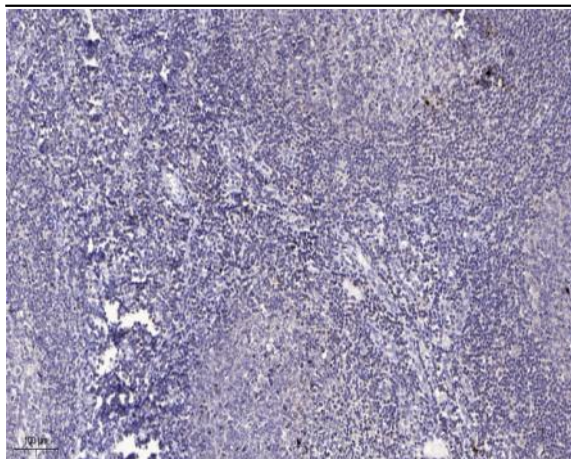
Western Blot analysis of Jurkat cells using NHE-8 Polyclonal Antibody



Western blot analysis of lysates from Jurkat cells, using SLC9A8 Antibody. The lane on the right is blocked with the synthesized peptide.



Western blot analysis of the lysates from HeLa cells using SLC9A8 antibody.



Immunohistochemical analysis of paraffin-embedded human tonsil. 1, Antibody was diluted at 1:200(4° overnight). 2, Tris-EDTA,pH9.0 was used for antigen retrieval. 3,Secondary antibody was diluted at 1:200(room temperature, 30min).