

mPR γ Polyclonal Antibody

Catalog No :	YT2826
Reactivity :	Human;Mouse;Rat
Applications :	WB;ELISA;IHC
Target :	mPR γ
Fields :	>>Chemical carcinogenesis - receptor activation
Gene Name :	PAQR5
Protein Name :	Membrane progesterin receptor gamma
Human Gene Id :	54852
Human Swiss Prot No :	Q9NXX6
Mouse Gene Id :	74090
Mouse Swiss Prot No :	Q9DCU0
Immunogen :	The antiserum was produced against synthesized peptide derived from human MPRG. AA range:281-330
Specificity :	mPR γ Polyclonal Antibody detects endogenous levels of mPR γ protein.
Formulation :	Liquid in PBS containing 50% glycerol, 0.5% BSA and 0.02% sodium azide.
Source :	Polyclonal, Rabbit,IgG
Dilution :	WB 1:500-2000;IHC 1:50-300; ELISA 2000-20000
Purification :	The antibody was affinity-purified from rabbit antiserum by affinity-chromatography using epitope-specific immunogen.
Concentration :	1 mg/ml

Storage Stability : -15°C to -25°C/1 year(Do not lower than -25°C)

Observed Band : 38kD

Background : function:Steroid membrane receptor. Binds progesterone. May be involved in oocyte maturation.,similarity:Belongs to the ADIPOR family.,tissue specificity:Expressed in the kidney, colon, adrenal and lung.,

Function : function:Steroid membrane receptor. Binds progesterone. May be involved in oocyte maturation.,similarity:Belongs to the ADIPOR family.,tissue specificity:Expressed in the kidney, colon, adrenal and lung.,

Subcellular Location : Cell membrane ; Multi-pass membrane protein .

Expression : Expressed in the brain, lung, kidney, colon, adrenal and lung.

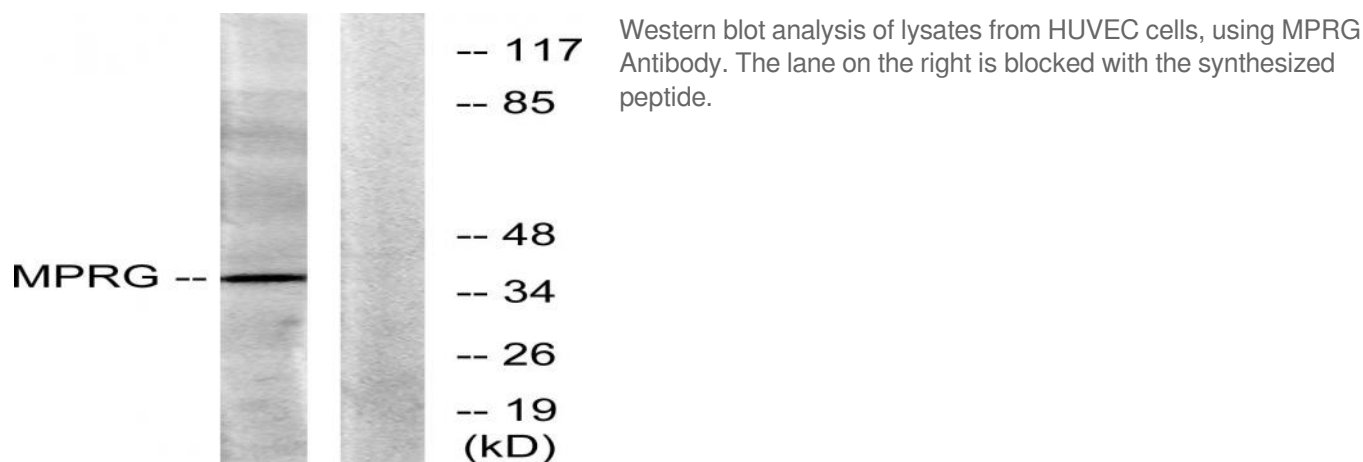
Sort : 10198

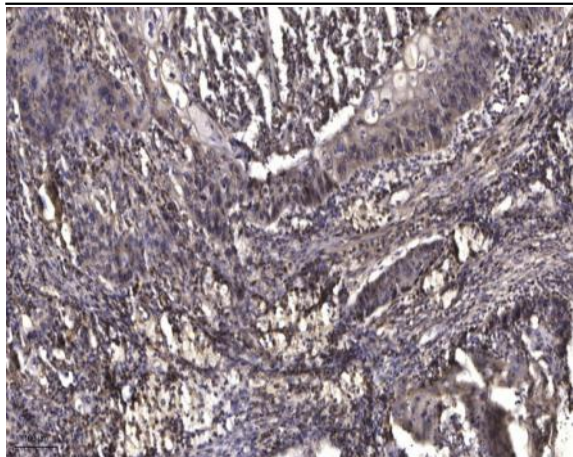
No4 : 1

Host : Rabbit

Modifications : Unmodified

Products Images





Immunohistochemical analysis of paraffin-embedded human Squamous cell carcinoma of lung. 1, Antibody was diluted at 1:200(4° overnight). 2, Tris-EDTA,pH9.0 was used for antigen retrieval. 3,Secondary antibody was diluted at 1:200(room temperature, 45min).