

## Nek5 Polyclonal Antibody

<b>Catalog No :</b>	YT3033
<b>Reactivity :</b>	Human;Mouse
<b>Applications :</b>	WB;ELISA
<b>Target :</b>	Nek5
<b>Gene Name :</b>	NEK5
<b>Protein Name :</b>	Serine/threonine-protein kinase Nek5
<b>Human Gene Id :</b>	341676
<b>Human Swiss Prot No :</b>	Q6P3R8
<b>Mouse Gene Id :</b>	330721
<b>Mouse Swiss Prot No :</b>	Q7TSC3
<b>Immunogen :</b>	The antiserum was produced against synthesized peptide derived from human NEK5. AA range:160-209
<b>Specificity :</b>	Nek5 Polyclonal Antibody detects endogenous levels of Nek5 protein.
<b>Formulation :</b>	Liquid in PBS containing 50% glycerol, 0.5% BSA and 0.02% sodium azide.
<b>Source :</b>	Polyclonal, Rabbit,IgG
<b>Dilution :</b>	WB 1:500 - 1:2000. ELISA: 1:5000. Not yet tested in other applications.
<b>Purification :</b>	The antibody was affinity-purified from rabbit antiserum by affinity-chromatography using epitope-specific immunogen.
<b>Concentration :</b>	1 mg/ml
<b>Storage Stability :</b>	-15°C to -25°C/1 year(Do not lower than -25°C)

**Molecularweight :** 81kD

**Background :** catalytic activity:ATP + a protein = ADP + a phosphoprotein.,cofactor:Magnesium.,similarity:Belongs to the protein kinase superfamily. NEK Ser/Thr protein kinase family. NIMA subfamily.,similarity:Contains 1 protein kinase domain.,

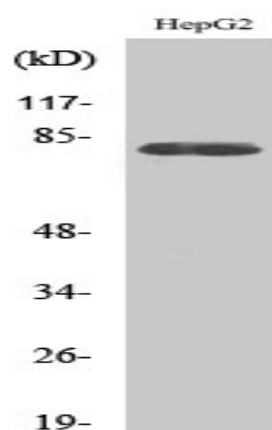
**Function :** catalytic activity:ATP + a protein = ADP + a phosphoprotein.,cofactor:Magnesium.,similarity:Belongs to the protein kinase superfamily. NEK Ser/Thr protein kinase family. NIMA subfamily.,similarity:Contains 1 protein kinase domain.,

**Expression :** Testis,

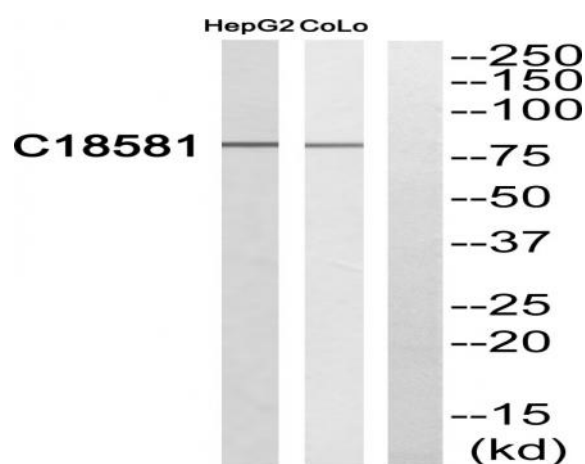
**Sort :** 10665

**No4 :** 1

## Products Images



Western blot analysis of various cells using Nek5 Polyclonal Antibody



Western blot analysis of NEK5 Antibody. The lane on the right is blocked with the NEK5 peptide.