

MMP-12 Polyclonal Antibody

Catalog No :	YT2795
Reactivity :	Human;Rat;Mouse;
Applications :	WB;IHC;IF;ELISA
Target :	MMP-12
Gene Name :	MMP12
Protein Name :	Macrophage metalloelastase
Human Gene Id :	4321
Human Swiss Prot No :	P39900
Mouse Swiss Prot No :	P34960
Immunogen :	The antiserum was produced against synthesized peptide derived from human MMP-12. AA range:362-411
Specificity :	MMP-12 Polyclonal Antibody detects endogenous levels of MMP-12 protein.
Formulation :	Liquid in PBS containing 50% glycerol, 0.5% BSA and 0.02% sodium azide.
Source :	Polyclonal, Rabbit,IgG
Dilution :	WB 1:500 - 1:2000. IHC 1:100 - 1:300. ELISA: 1:40000.. IF 1:50-200
Purification :	The antibody was affinity-purified from rabbit antiserum by affinity-chromatography using epitope-specific immunogen.
Concentration :	1 mg/ml
Storage Stability :	-15°C to -25°C/1 year(Do not lower than -25°C)
Observed Band :	48kD

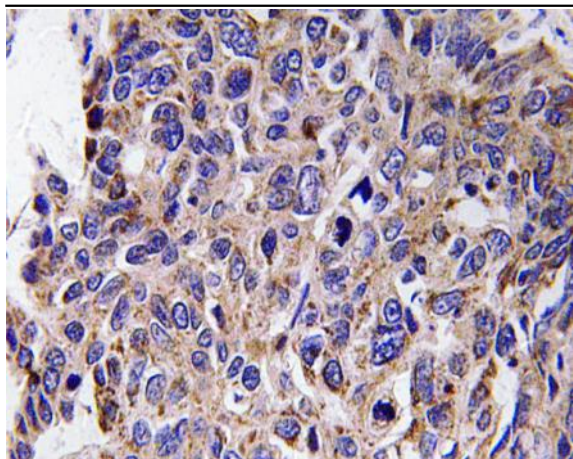
Cell Pathway : Angiogenesis**Background :**

This gene encodes a member of the peptidase M10 family of matrix metalloproteinases (MMPs). Proteins in this family are involved in the breakdown of extracellular matrix in normal physiological processes, such as embryonic development, reproduction, and tissue remodeling, as well as in disease processes, such as arthritis and metastasis. The encoded preproprotein is proteolytically processed to generate the mature protease. This protease degrades soluble and insoluble elastin. This gene may play a role in aneurysm formation and mutations in this gene are associated with lung function and chronic obstructive pulmonary disease (COPD). This gene is part of a cluster of MMP genes on chromosome 11. [provided by RefSeq, Jan 2016],

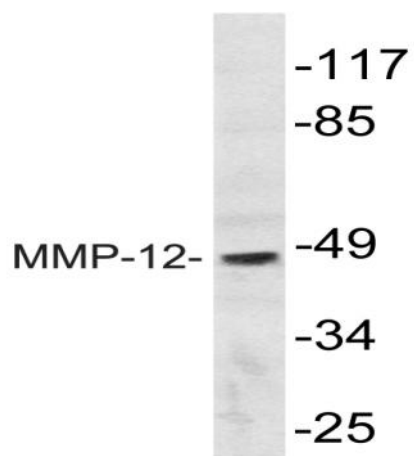
Function :

catalytic activity:Hydrolysis of soluble and insoluble elastin. Specific cleavages are also produced at 14-Ala-|-Leu-15 and 16-Tyr-|-Leu-17 in the B chain of insulin.,cofactor:Binds 2 zinc ions per subunit.,cofactor:Binds 4 calcium ions per subunit.,domain:The conserved cysteine present in the cysteine-switch motif binds the catalytic zinc ion, thus inhibiting the enzyme. The dissociation of the cysteine from the zinc ion upon the activation-peptide release activates the enzyme.,function:May be involved in tissue injury and remodeling. Has significant elastolytic activity. Can accept large and small amino acids at the P1' site, but has a preference for leucine. Aromatic or hydrophobic residues are preferred at the P1 site, with small hydrophobic residues (preferably alanine) occupying P3.,induction:By exposure to lipopolysaccharide. Inhibited by dexamethasone.,similarity:Belongs to the p

Subcellular Location : Secreted, extracellular space, extracellular matrix .**Expression :** Found in alveolar macrophages but not in peripheral blood monocytes.**Tag :** hot**Sort :** 9699**No4 :** 1**Host :** Rabbit**Modifications :** Unmodified**Products Images**



Immunohistochemistry analysis of MMP-12 antibody in paraffin-embedded human lung carcinoma tissue.



Western blot analysis of lysate from HepG2 cells, using MMP-12 antibody.