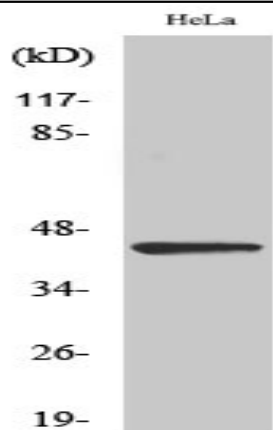


NEIL1 Polyclonal Antibody

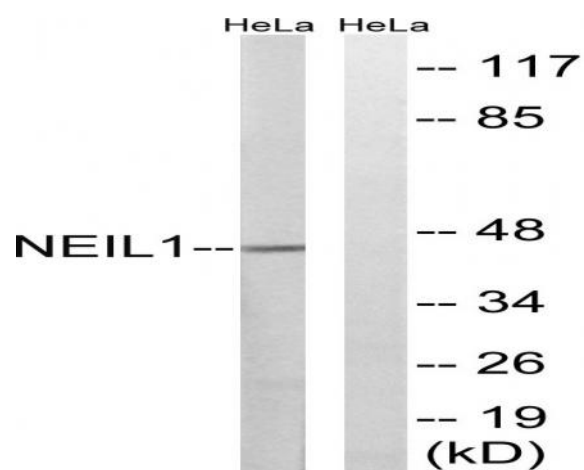
Catalog No :	YT3030
Reactivity :	Human;Mouse
Applications :	WB;ELISA
Target :	NEIL1
Fields :	>>Base excision repair
Gene Name :	NEIL1
Protein Name :	Endonuclease 8-like 1
Human Gene Id :	79661
Human Swiss Prot No :	Q96FI4
Mouse Swiss Prot No :	Q8K4Q6
Immunogen :	The antiserum was produced against synthesized peptide derived from human NEIL1. AA range:291-340
Specificity :	NEIL1 Polyclonal Antibody detects endogenous levels of NEIL1 protein.
Formulation :	Liquid in PBS containing 50% glycerol, 0.5% BSA and 0.02% sodium azide.
Source :	Polyclonal, Rabbit,IgG
Dilution :	WB 1:500 - 1:2000. ELISA: 1:20000. Not yet tested in other applications.
Purification :	The antibody was affinity-purified from rabbit antiserum by affinity-chromatography using epitope-specific immunogen.
Concentration :	1 mg/ml
Storage Stability :	-15°C to -25°C/1 year(Do not lower than -25°C)

Observed Band :	44kD
Cell Pathway :	Base excision repair;
Background :	This gene is a member of the Nei endonuclease VIII-like gene family which encodes DNA glycosylases. The encoded enzyme participates in the DNA repair pathway by initiating base excision repair by removing damaged bases, primarily oxidized pyrimidines. Multiple transcript variants encoding different isoforms have been found for this gene. [provided by RefSeq, Feb 2012],
Function :	catalytic activity:Removes damaged bases from DNA, leaving an abasic site.,catalytic activity:The C-O-P bond 3' to the apurinic or apyrimidinic site in DNA is broken by a beta-elimination reaction, leaving a 3'-terminal unsaturated sugar and a product with a terminal 5'-phosphate.,function:Involved in base excision repair of DNA damaged by oxidation or by mutagenic agents. Acts as DNA glycosylase that recognizes and removes damaged bases. Has a preference for oxidized pyrimidines, such as thymine glycol, formamidopyrimidine (Fapy) and 5-hydroxyuracil. Has marginal activity towards 8-oxoguanine. Has AP (apurinic/apyrimidinic) lyase activity and introduces nicks in the DNA strand. Cleaves the DNA backbone by beta-delta elimination to generate a single-strand break at the site of the removed base with both 3'- and 5'-phosphates. Has DNA glycosylase/lyase activity towards mismatched uracil a
Subcellular Location :	Cytoplasm, cytoskeleton, microtubule organizing center, centrosome . Nucleus . Chromosome . During mitosis, associates with centrosomes and condensed chromatin.
Expression :	Ubiquitous.
Sort :	10663
No4 :	1
Host :	Rabbit
Modifications :	Unmodified

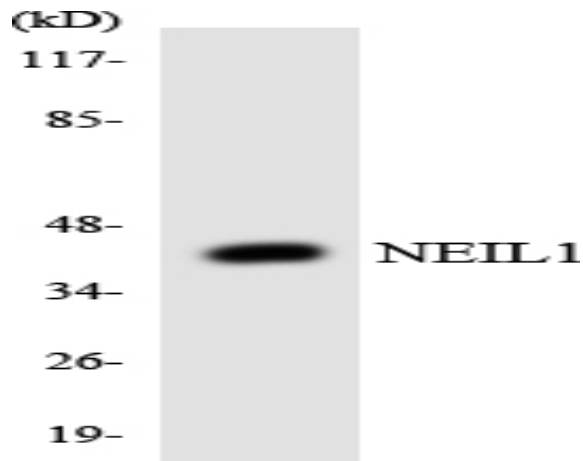
Products Images



Western Blot analysis of various cells using NEIL1 Polyclonal Antibody



Western blot analysis of lysates from HeLa cells, using NEIL1 Antibody. The lane on the right is blocked with the synthesized peptide.



Western blot analysis of the lysates from HeLa cells using NEIL1 antibody.