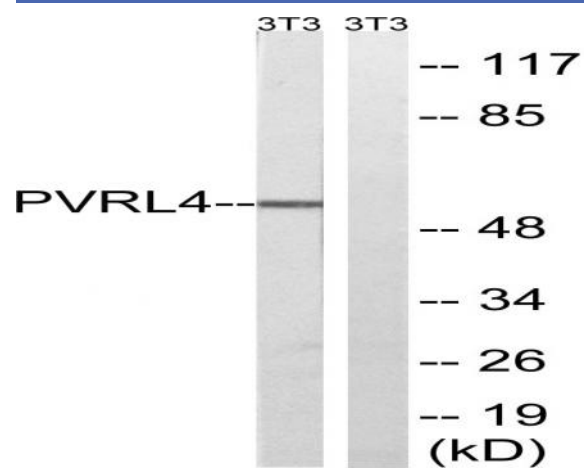


## Nectin 4 Polyclonal Antibody

<b>Catalog No :</b>	YT3025
<b>Reactivity :</b>	Human;Rat;Mouse;
<b>Applications :</b>	WB;ELISA
<b>Target :</b>	Nectin 4
<b>Fields :</b>	>>Adherens junction
<b>Gene Name :</b>	PVRL4
<b>Protein Name :</b>	Poliovirus receptor-related protein 4
<b>Human Gene Id :</b>	81607
<b>Human Swiss Prot No :</b>	Q96NY8
<b>Mouse Swiss Prot No :</b>	Q8R007
<b>Immunogen :</b>	The antiserum was produced against synthesized peptide derived from human PVRL4. AA range:312-361
<b>Specificity :</b>	Nectin 4 Polyclonal Antibody detects endogenous levels of Nectin 4 protein.
<b>Formulation :</b>	Liquid in PBS containing 50% glycerol, 0.5% BSA and 0.02% sodium azide.
<b>Source :</b>	Polyclonal, Rabbit,IgG
<b>Dilution :</b>	WB 1:500 - 1:2000. ELISA: 1:5000. Not yet tested in other applications.
<b>Purification :</b>	The antibody was affinity-purified from rabbit antiserum by affinity-chromatography using epitope-specific immunogen.
<b>Concentration :</b>	1 mg/ml
<b>Storage Stability :</b>	-15°C to -25°C/1 year(Do not lower than -25°C)

<b>Observed Band :</b>	55kD
<b>Cell Pathway :</b>	Adherens_Junction;
<b>Background :</b>	<p>This gene encodes a member of the nectin family. The encoded protein contains two immunoglobulin-like (Ig-like) C2-type domains and one Ig-like V-type domain. It is involved in cell adhesion through trans-homophilic and -heterophilic interactions. It is a single-pass type I membrane protein. The soluble form is produced by proteolytic cleavage at the cell surface by the metalloproteinase ADAM17/TACE. The secreted form is found in both breast tumor cell lines and breast tumor patients. Mutations in this gene are the cause of ectodermal dysplasia-syndactyly syndrome type 1, an autosomal recessive disorder. Alternatively spliced transcript variants have been found but the full-length nature of the variant has not been determined.[provided by RefSeq, Jan 2011],</p>
<b>Function :</b>	<p>function:Seems to be involved in cell adhesion through trans-homophilic and -heterophilic interactions, the latter including specifically interactions with PVRL2/nectin-1. Does not act as receptor for alpha-herpesvirus entry into cells.,PTM:The soluble form is produced by proteolytic cleavage at the cell surface (shedding), probably by ADAM17/TACE.,similarity:Belongs to the nectin family.,similarity:Contains 1 Ig-like V-type (immunoglobulin-like) domain.,similarity:Contains 2 Ig-like C2-type (immunoglobulin-like) domains.,subcellular location:Colocalizes with MLLT4 at cadherin-based adherens junctions.,subcellular location:The secreted form is found in breast tumor patients.,subunit:Self-associates. Interacts via its Ig-like V-type domain with PVRL1/nectin-1 Ig-like V-type domain. Interacts via its C-terminus with MLLT4.,tissue specificity:Predominantly expressed in placenta. Not detecte</p>
<b>Subcellular Location :</b>	<p>Cell membrane ; Single-pass type I membrane protein . Cell junction, adherens junction . Colocalizes with AFDN at cadherin-based adherens junctions (PubMed:11544254).; [Processed poliovirus receptor-related protein 4]: Secreted . The secreted form is found in breast tumor patients (PubMed:15784625).</p>
<b>Expression :</b>	<p>Predominantly expressed in placenta. Not detected in normal breast epithelium but expressed in breast carcinoma.</p>
<b>Sort :</b>	10655
<b>No4 :</b>	1
<b>Host :</b>	Rabbit
<b>Modifications :</b>	Unmodified

## Products Images



Western blot analysis of lysates from NIH/3T3 cells, using PVRL4 Antibody. The lane on the right is blocked with the synthesized peptide.