

NTT5 Polyclonal Antibody

Catalog No :	YT3205
Reactivity :	Human;Rat;Mouse;
Applications :	IHC;IF;ELISA
Target :	NTT5
Gene Name :	SLC6A16
Protein Name :	Orphan sodium- and chloride-dependent neurotransmitter transporter NTT5
Human Gene Id :	28968
Human Swiss Prot No :	Q9GZN6
Immunogen :	The antiserum was produced against synthesized peptide derived from human SLC6A16. AA range:233-282
Specificity :	NTT5 Polyclonal Antibody detects endogenous levels of NTT5 protein.
Formulation :	Liquid in PBS containing 50% glycerol, 0.5% BSA and 0.02% sodium azide.
Source :	Polyclonal, Rabbit,IgG
Dilution :	IHC 1:100 - 1:300. ELISA: 1:40000.. IF 1:50-200
Purification :	The antibody was affinity-purified from rabbit antiserum by affinity-chromatography using epitope-specific immunogen.
Concentration :	1 mg/ml
Storage Stability :	-15°C to -25°C/1 year(Do not lower than -25°C)
Molecularweight :	82kD
Background :	SLC6A16 shows structural characteristics of an Na(+)- and Cl(-)-dependent neurotransmitter transporter, including 12 transmembrane (TM) domains,

intracellular N and C termini, and large extracellular loops containing multiple N-glycosylation sites.[supplied by OMIM, Mar 2008],

Function :

similarity:Belongs to the sodium:neurotransmitter symporter (SNF) family.,tissue specificity:Highly expressed in peripheral tissues, particularly in testis, pancreas, and prostate.,

Subcellular Location :

Membrane; Multi-pass membrane protein.

Expression :

Highly expressed in peripheral tissues, particularly in testis, pancreas, and prostate.

Sort :

10987

No4 :

1

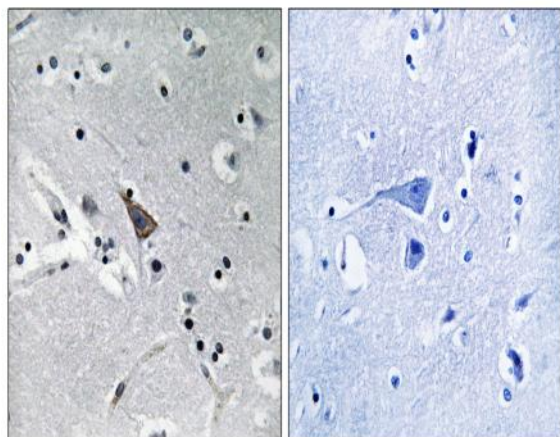
Host :

Rabbit

Modifications :

Unmodified

Products Images



Immunohistochemistry analysis of paraffin-embedded human brain, using SLC6A16 Antibody. The picture on the right is blocked with the synthesized peptide.