

NDUFC1 Polyclonal Antibody

Catalog No :	YT3015
Reactivity :	Human;Mouse
Applications :	IHC;IF;ELISA
Target :	NDUFC1
Fields :	>>Oxidative phosphorylation;>>Metabolic pathways;>>Thermogenesis;>>Retrograde endocannabinoid signaling;>>Non-alcoholic fatty liver disease;>>Alzheimer disease;>>Parkinson disease;>>Amyotrophic lateral sclerosis;>>Huntington disease;>>Prion disease;>>Pathways of neurodegeneration - multiple diseases;>>Chemical carcinogenesis - reactive oxygen species;>>Diabetic cardiomyopathy
Gene Name :	NDUFC1
Protein Name :	NADH dehydrogenase [ubiquinone] 1 subunit C1 mitochondrial
Human Gene Id :	4717
Human Swiss Prot No :	O43677
Mouse Gene Id :	66377
Mouse Swiss Prot No :	Q9CQY9
Immunogen :	Synthesized peptide derived from NDUFC1 . at AA range: 40-120
Specificity :	NDUFC1 Polyclonal Antibody detects endogenous levels of NDUFC1 protein.
Formulation :	Liquid in PBS containing 50% glycerol, 0.5% BSA and 0.02% sodium azide.
Source :	Polyclonal, Rabbit,IgG
Dilution :	IHC 1:100 - 1:300. ELISA: 1:10000.. IF 1:50-200
Purification :	The antibody was affinity-purified from rabbit antiserum by affinity-

chromatography using epitope-specific immunogen.

Concentration : 1 mg/ml

Storage Stability : -15°C to -25°C/1 year(Do not lower than -25°C)

Molecularweight : 9kD

Cell Pathway : Oxidative phosphorylation;Alzheimer's disease;Parkinson's disease;Huntington's disease;

Background : The encoded protein is a subunit of the NADH:ubiquinone oxidoreductase (complex I), the first enzyme complex in the electron transport chain located in the inner mitochondrial membrane. Alternative splicing results in multiple transcript variants. [provided by RefSeq, May 2010],

Function : function:Accessory subunit of the mitochondrial membrane respiratory chain NADH dehydrogenase (Complex I), that is believed to be not involved in catalysis. Complex I functions in the transfer of electrons from NADH to the respiratory chain. The immediate electron acceptor for the enzyme is believed to be ubiquinone.,similarity:Belongs to the complex I NDUFC1 subunit family.,subunit:Complex I is composed of 45 different subunits.,

Subcellular Location : Mitochondrion inner membrane ; Single-pass membrane protein ; Matrix side .

Expression : Brain,Heart,Skin,Umbilical cord blood,

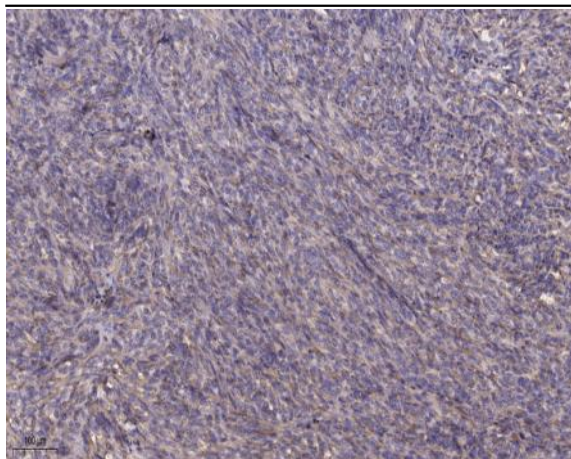
Sort : 10641

No4 : 1

Host : Rabbit

Modifications : Unmodified

Products Images



Immunohistochemical analysis of paraffin-embedded human Colon cancer. 1, Antibody was diluted at 1:200(4° overnight). 2, Tris-EDTA,pH9.0 was used for antigen retrieval. 3,Secondary antibody was diluted at 1:200(room temperature, 45min).