

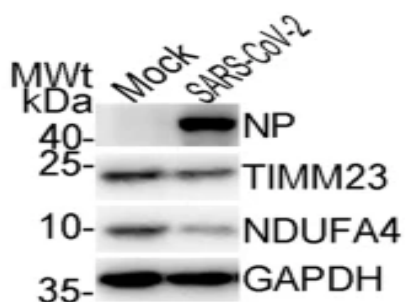
NDUFA4 Polyclonal Antibody

Catalog No :	YT3008
Reactivity :	Human;Mouse;Rat
Applications :	WB;IHC;IF;ELISA
Target :	NDUFA4
Fields :	>>Oxidative phosphorylation;>>Metabolic pathways;>>Thermogenesis;>>Retrograde endocannabinoid signaling;>>Non-alcoholic fatty liver disease;>>Alzheimer disease;>>Parkinson disease;>>Amyotrophic lateral sclerosis;>>Huntington disease;>>Prion disease;>>Pathways of neurodegeneration - multiple diseases;>>Chemical carcinogenesis - reactive oxygen species;>>Diabetic cardiomyopathy
Gene Name :	NDUFA4
Protein Name :	NADH dehydrogenase [ubiquinone] 1 alpha subcomplex subunit 4
Human Gene Id :	4697
Human Swiss Prot No :	O00483
Mouse Gene Id :	17992
Mouse Swiss Prot No :	Q62425
Immunogen :	The antiserum was produced against synthesized peptide derived from human NDUFA4. AA range:32-81
Specificity :	NDUFA4 Polyclonal Antibody detects endogenous levels of NDUFA4 protein.
Formulation :	Liquid in PBS containing 50% glycerol, 0.5% BSA and 0.02% sodium azide.
Source :	Polyclonal, Rabbit,IgG
Dilution :	WB 1:500 - 1:2000. IHC 1:100 - 1:300. ELISA: 1:10000.. IF 1:50-200

Purification :	The antibody was affinity-purified from rabbit antiserum by affinity-chromatography using epitope-specific immunogen.
Concentration :	1 mg/ml
Storage Stability :	-15°C to -25°C/1 year(Do not lower than -25°C)
Observed Band :	9kD
Cell Pathway :	Oxidative phosphorylation;Alzheimer's disease;Parkinson's disease;Huntington's disease;
Background :	The protein encoded by this gene belongs to the complex I 9kDa subunit family. Mammalian complex I of mitochondrial respiratory chain is composed of 45 different subunits. This protein has NADH dehydrogenase activity and oxidoreductase activity. It transfers electrons from NADH to the respiratory chain. The immediate electron acceptor for the enzyme is believed to be ubiquinone. [provided by RefSeq, Jul 2008],
Function :	function:Accessory subunit of the mitochondrial membrane respiratory chain NADH dehydrogenase (Complex I), that is believed to be not involved in catalysis. Complex I functions in the transfer of electrons from NADH to the respiratory chain. The immediate electron acceptor for the enzyme is believed to be ubiquinone.,similarity:Belongs to the complex I NDUFA4 subunit family.,subunit:Mammalian complex I is composed of 45 different subunits.,
Subcellular Location :	Mitochondrion inner membrane ; Single-pass membrane protein .
Expression :	Brain,Liver,
Tag :	orthogonal
Sort :	1093
No4 :	1
Host :	Rabbit
Modifications :	Unmodified

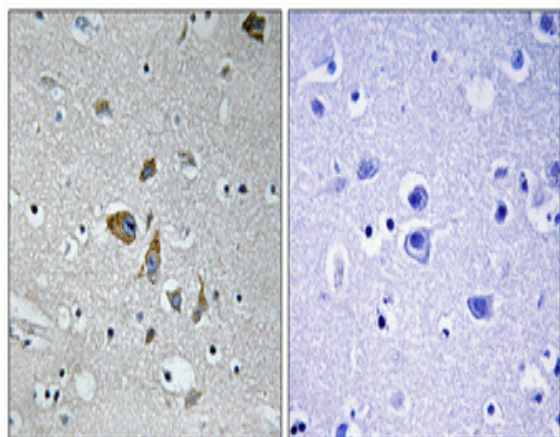
Products Images

B

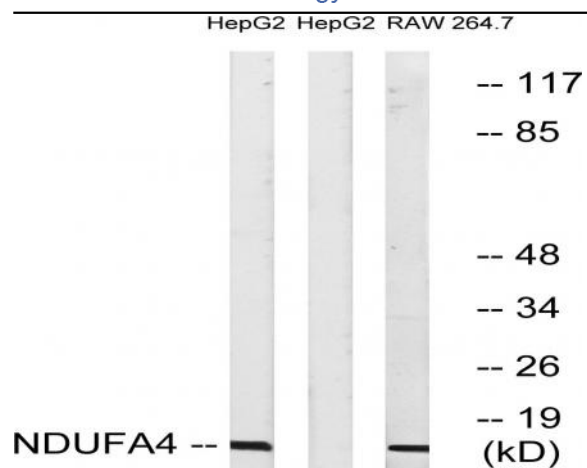


Wang, P., Luo, R., Zhang, M. et al. A cross-talk between epithelium and endothelium mediates human alveolar-capillary injury during SARS-CoV-2 infection. *Cell Death Dis* 11, 1042 (2020).

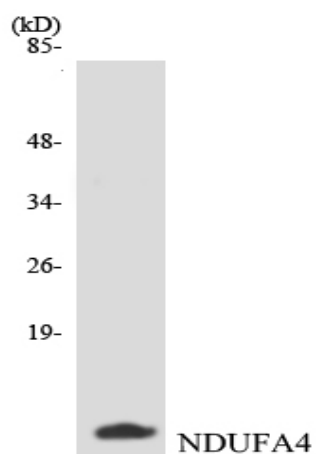
Western Blot analysis of various cells using NDUFA4 Polyclonal Antibody



Immunohistochemical analysis of paraffin-embedded Human brain. Antibody was diluted at 1:100(4° overnight). High-pressure and temperature Tris-EDTA,pH8.0 was used for antigen retrieval. Negative contrl (right) obtaned from antibody was pre-absorbed by immunogen peptide.



Western blot analysis of lysates from HepG2 and RAW264.7 cells, using NDUFA4 Antibody. The lane on the right is blocked with the synthesized peptide.



Western blot analysis of the lysates from HepG2 cells using NDUFA4 antibody.