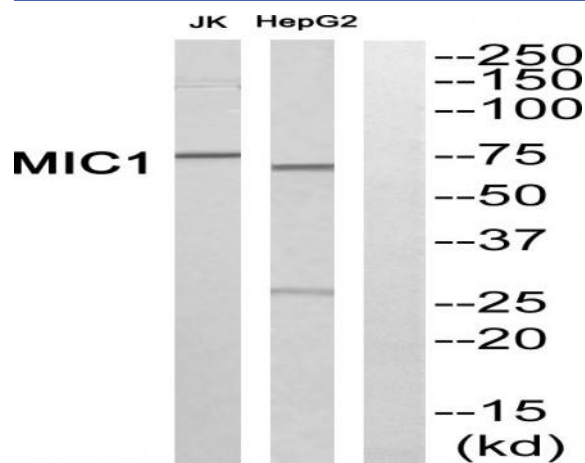


Mic-1 Polyclonal Antibody

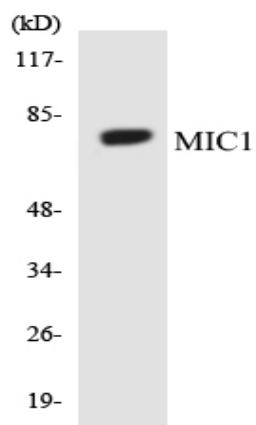
Catalog No :	YT2757
Reactivity :	Human;Mouse
Applications :	WB;ELISA;IHC
Target :	Mic-1
Gene Name :	C18orf8
Protein Name :	Uncharacterized protein C18orf8
Human Gene Id :	29919
Human Swiss Prot No :	Q96DM3
Mouse Gene Id :	76482
Mouse Swiss Prot No :	Q8VC42
Immunogen :	The antiserum was produced against synthesized peptide derived from human MIC1. AA range:591-640
Specificity :	Mic-1 Polyclonal Antibody detects endogenous levels of Mic-1 protein.
Formulation :	Liquid in PBS containing 50% glycerol, 0.5% BSA and 0.02% sodium azide.
Source :	Polyclonal, Rabbit,IgG
Dilution :	WB 1:500-2000;IHC 1:50-300; ELISA 2000-20000
Purification :	The antibody was affinity-purified from rabbit antiserum by affinity-chromatography using epitope-specific immunogen.
Concentration :	1 mg/ml
Storage Stability :	-15°C to -25°C/1 year(Do not lower than -25°C)

Observed Band :	75kD
Background :	This gene encodes a colon cancer associated protein. [provided by RefSeq, Jan 2013],
Function :	similarity:Contains 1 Mic1 domain.,
Subcellular Location :	Lysosome membrane . Late endosome membrane .
Expression :	Colon carcinoma,Epithelium,Lung,Synovium,
Sort :	9634
No4 :	1
Host :	Rabbit
Modifications :	Unmodified

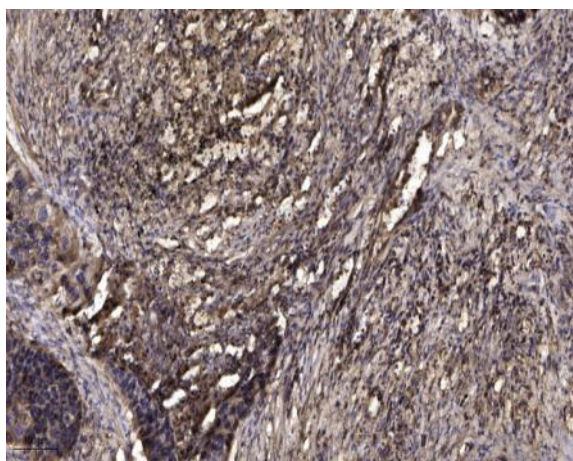
Products Images



Western blot analysis of MIC1 Antibody. The lane on the right is blocked with the MIC1 peptide.



Western blot analysis of the lysates from HeLa cells using MIC1 antibody.



Immunohistochemical analysis of paraffin-embedded human Squamous cell carcinoma of lung. 1, Antibody was diluted at 1:200(4° overnight). 2, Tris-EDTA,pH9.0 was used for antigen retrieval. 3,Secondary antibody was diluted at 1:200(room temperature, 45min).