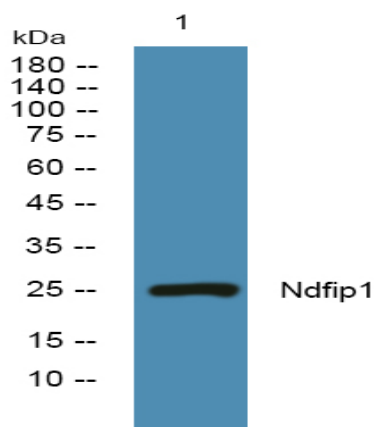


## Ndfip1 Polyclonal Antibody

<b>Catalog No :</b>	YT3002
<b>Reactivity :</b>	Human;Mouse;Rat
<b>Applications :</b>	WB;ELISA
<b>Target :</b>	Ndfip1
<b>Gene Name :</b>	NDFIP1
<b>Protein Name :</b>	NEDD4 family-interacting protein 1
<b>Human Gene Id :</b>	80762
<b>Human Swiss Prot No :</b>	Q9BT67
<b>Mouse Gene Id :</b>	65113
<b>Mouse Swiss Prot No :</b>	Q8R0W6
<b>Rat Gene Id :</b>	291609
<b>Rat Swiss Prot No :</b>	Q5U2S1
<b>Immunogen :</b>	Synthesized peptide derived from Ndfip1 . at AA range: 150-230
<b>Specificity :</b>	Ndfip1 Polyclonal Antibody detects endogenous levels of Ndfip1 protein.
<b>Formulation :</b>	Liquid in PBS containing 50% glycerol, 0.5% BSA and 0.02% sodium azide.
<b>Source :</b>	Polyclonal, Rabbit,IgG
<b>Dilution :</b>	WB 1:500 - 1:2000. ELISA: 1:40000. Not yet tested in other applications.
<b>Purification :</b>	The antibody was affinity-purified from rabbit antiserum by affinity-chromatography using epitope-specific immunogen.

<b>Concentration :</b>	1 mg/ml
<b>Storage Stability :</b>	-15°C to -25°C/1 year(Do not lower than -25°C)
<b>Observed Band :</b>	25kD
<b>Background :</b>	The protein encoded by this gene belongs to a small group of evolutionarily conserved proteins with three transmembrane domains. It is a potential target for ubiquitination by the Nedd4 family of proteins. This protein is thought to be part of a family of integral Golgi membrane proteins. [provided by RefSeq, Jul 2008],
<b>Function :</b>	developmental stage:Expressed in fetal brain, kidney and lung.,domain:The WW-binding motifs mediate interaction with NEDD4.,function:May play a role in Golgi structure maintenance.,PTM:Ubiquitinated by NEDD4; mono-, di- and polyubiquitinated forms are detected. Ubiquitination regulates its degradation.,subunit:Interacts with NEDD4. Interacts in vitro with NEDD4L, SR140, WWP2 and ITCH.,tissue specificity:Widely expressed. Higher levels are detected in cerebellum, pituitary, thalamus, kidney, liver, testis, salivary glands and placenta.,
<b>Subcellular Location :</b>	Endosome membrane ; Multi-pass membrane protein . Golgi apparatus membrane . Cell junction, synapse, synaptosome . Cell projection, dendrite . Secreted . Detected in exosomes and secreted via the exosomal pathway (PubMed:18819914).
<b>Expression :</b>	Widely expressed. Higher levels are detected in cerebellum, pituitary, thalamus, kidney, liver, testis, salivary glands and placenta. Also expressed in fetal brain, kidney and lung.
<b>Sort :</b>	10626
<b>No4 :</b>	1
<b>Host :</b>	Rabbit
<b>Modifications :</b>	Unmodified

## Products Images



Western blot analysis of lysates from Jurkat cells, primary antibody was diluted at 1:1000, 4° over night