

NCoA-7 Polyclonal Antibody

Catalog No :	YT2998
Reactivity :	Human;Rat;Mouse;
Applications :	WB;IHC;IF;ELISA
Target :	NCoA-7
Fields :	>>Lysosome
Gene Name :	NCOA7
Protein Name :	Nuclear receptor coactivator 7
Human Gene Id :	135112
Human Swiss Prot No :	Q8NI08
Mouse Swiss Prot No :	Q6DFV7
Immunogen :	The antiserum was produced against synthesized peptide derived from human NCOA7. AA range:422-471
Specificity :	NCoA-7 Polyclonal Antibody detects endogenous levels of NCoA-7 protein.
Formulation :	Liquid in PBS containing 50% glycerol, 0.5% BSA and 0.02% sodium azide.
Source :	Polyclonal, Rabbit,IgG
Dilution :	WB 1:500 - 1:2000. IHC 1:100 - 1:300. ELISA: 1:20000.. IF 1:50-200
Purification :	The antibody was affinity-purified from rabbit antiserum by affinity-chromatography using epitope-specific immunogen.
Concentration :	1 mg/ml
Storage Stability :	-15°C to -25°C/1 year(Do not lower than -25°C)

Observed Band : 106kD

Background : function:Enhances the transcriptional activities of several nuclear receptors. Involved in the coactivation of different nuclear receptors, such as ESR1, THRB, PPARG and RARA.,similarity:Belongs to the OXR1 family.,similarity:Contains 1 LysM repeat.,similarity:Contains 1 TLD domain.,subunit:Interacts with ESR1, ESR2A, ESR2B, THRB, PPARG and RARA in a ligand-inducible manner. Interacts with the heterodimer AHR-ARNT.,tissue specificity:Highly expressed in brain. Weakly expressed in mammary gland, ovary, uterus, prostate, stomach, bladder, spinal cord and pancreas. Expressed in cancer cell line.,

Function : function:Enhances the transcriptional activities of several nuclear receptors. Involved in the coactivation of different nuclear receptors, such as ESR1, THRB, PPARG and RARA.,similarity:Belongs to the OXR1 family.,similarity:Contains 1 LysM repeat.,similarity:Contains 1 TLD domain.,subunit:Interacts with ESR1, ESR2A, ESR2B, THRB, PPARG and RARA in a ligand-inducible manner. Interacts with the heterodimer AHR-ARNT.,tissue specificity:Highly expressed in brain. Weakly expressed in mammary gland, ovary, uterus, prostate, stomach, bladder, spinal cord and pancreas. Expressed in cancer cell line.,

Subcellular Location : Nucleus .

Expression : Highly expressed in brain. Weakly expressed in mammary gland, ovary, uterus, prostate, stomach, bladder, spinal cord and pancreas. Expressed in cancer cell line.

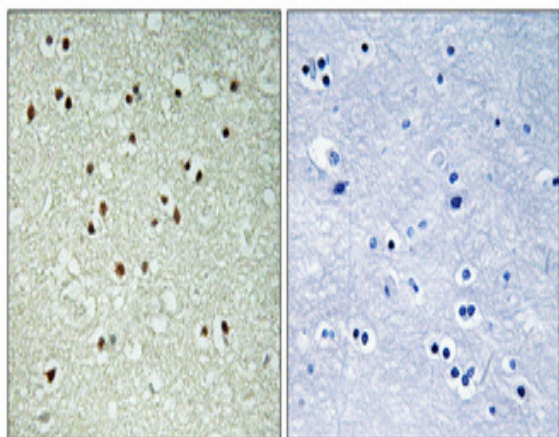
Sort : 10619

No4 : 1

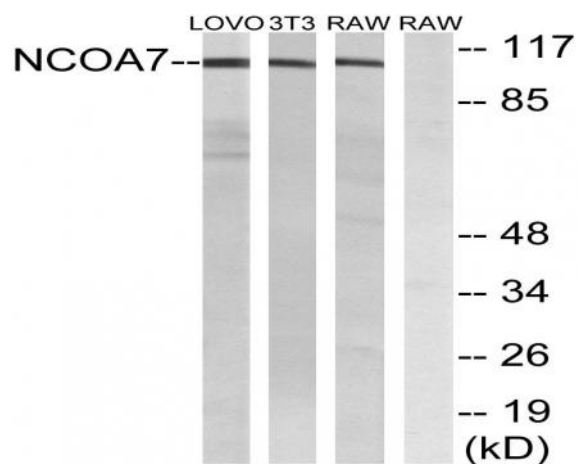
Host : Rabbit

Modifications : Unmodified

Products Images



Immunohistochemical analysis of paraffin-embedded Human brain. Antibody was diluted at 1:100(4° overnight). High-pressure and temperature Tris-EDTA,pH8.0 was used for antigen retrieval. Negative control (right) obtained from antibody was pre-absorbed by immunogen peptide.



Western blot analysis of lysates from LOVO, NIH/3T3, and RAW264.7 cells, using NCOA7 Antibody. The lane on the right is blocked with the synthesized peptide.