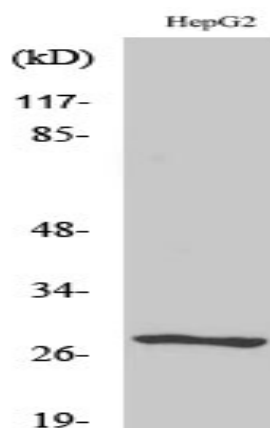


NPDC-1 Polyclonal Antibody

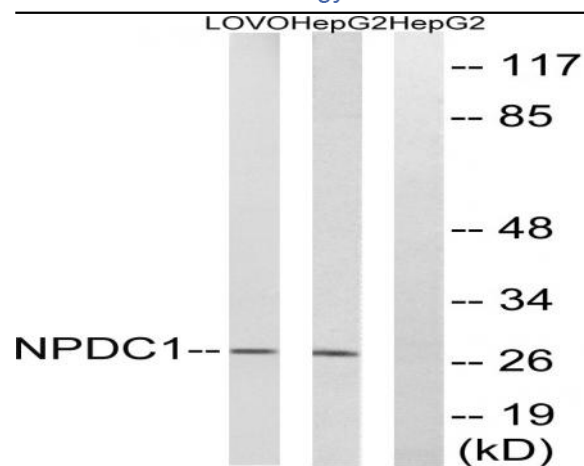
Catalog No :	YT3180
Reactivity :	Human;Mouse;Rat
Applications :	WB;ELISA
Target :	NPDC-1
Gene Name :	NPDC1
Protein Name :	Neural proliferation differentiation and control protein 1
Human Gene Id :	56654
Human Swiss Prot No :	Q9NQX5
Mouse Gene Id :	18146
Mouse Swiss Prot No :	Q64322
Immunogen :	The antiserum was produced against synthesized peptide derived from human NPDC1. AA range:189-238
Specificity :	NPDC-1 Polyclonal Antibody detects endogenous levels of NPDC-1 protein.
Formulation :	Liquid in PBS containing 50% glycerol, 0.5% BSA and 0.02% sodium azide.
Source :	Polyclonal, Rabbit,IgG
Dilution :	WB 1:500 - 1:2000. ELISA: 1:20000. Not yet tested in other applications.
Purification :	The antibody was affinity-purified from rabbit antiserum by affinity-chromatography using epitope-specific immunogen.
Concentration :	1 mg/ml
Storage Stability :	-15°C to -25°C/1 year(Do not lower than -25°C)

Observed Band :	35kD
Background :	function:Suppresses oncogenic transformation in neural and non-neural cells and down-regulates neural cell proliferation. Might be involved in transcriptional regulation.,similarity:Belongs to the NPDC1/cab-1 family.,tissue specificity:Strongly expressed in adult brain; especially in hippocampus, frontal lobe and temporal lobe.,
Function :	function:Suppresses oncogenic transformation in neural and non-neural cells and down-regulates neural cell proliferation. Might be involved in transcriptional regulation.,similarity:Belongs to the NPDC1/cab-1 family.,tissue specificity:Strongly expressed in adult brain; especially in hippocampus, frontal lobe and temporal lobe.,
Subcellular Location :	Membrane ; Single-pass membrane protein .
Expression :	Strongly expressed in adult brain; especially in hippocampus, frontal lobe and temporal lobe.
Sort :	10943
No4 :	1
Host :	Rabbit
Modifications :	Unmodified

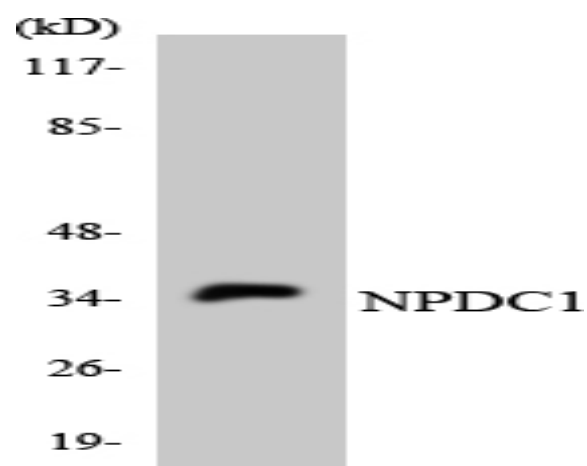
Products Images



Western Blot analysis of various cells using NPDC-1 Polyclonal Antibody



Western blot analysis of lysates from HepG2 and LOVO cells, using NPDC1 Antibody. The lane on the right is blocked with the synthesized peptide.



Western blot analysis of the lysates from K562 cells using NPDC1 antibody.