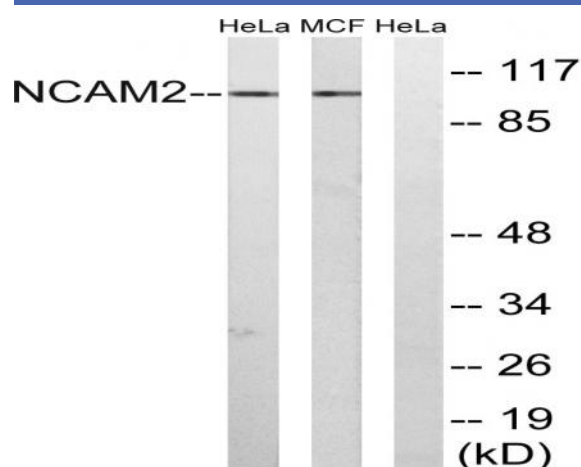


NCAM2 Polyclonal Antibody

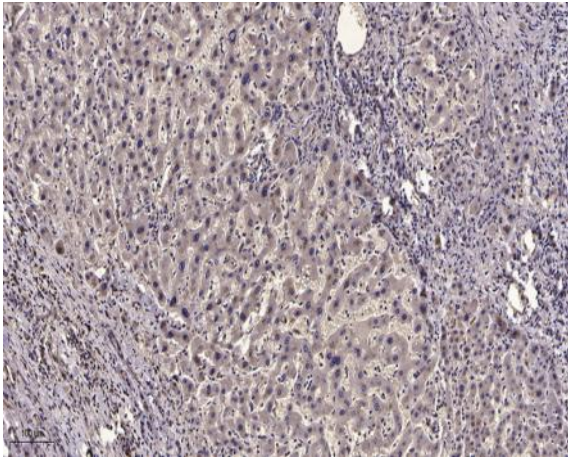
Catalog No :	YT2989
Reactivity :	Human;Mouse;Rat
Applications :	WB;IHC
Target :	NCAM2
Fields :	>>Cell adhesion molecules;>>Prion disease
Gene Name :	NCAM2
Protein Name :	Neural cell adhesion molecule 2
Human Gene Id :	4685
Human Swiss Prot No :	O15394
Mouse Gene Id :	17968
Mouse Swiss Prot No :	O35136
Immunogen :	The antiserum was produced against synthesized peptide derived from human NCAM2. AA range:264-313
Specificity :	NCAM2 Polyclonal Antibody detects endogenous levels of NCAM2 protein.
Formulation :	Liquid in PBS containing 50% glycerol, 0.5% BSA and 0.02% sodium azide.
Source :	Polyclonal, Rabbit,IgG
Dilution :	WB 1:500-2000;IHC 1:50-300
Purification :	The antibody was affinity-purified from rabbit antiserum by affinity-chromatography using epitope-specific immunogen.
Concentration :	1 mg/ml

Storage Stability :	-15°C to -25°C/1 year(Do not lower than -25°C)
Observed Band :	100kD
Cell Pathway :	Cell adhesion molecules (CAMs);Prion diseases;
Background :	The protein encoded by this gene belongs to the immunoglobulin superfamily. It is a type I membrane protein and may function in selective fasciculation and zone-to-zone projection of the primary olfactory axons. [provided by RefSeq, Jul 2008],
Function :	function:May play important roles in selective fasciculation and zone-to-zone projection of the primary olfactory axons.,similarity:Contains 2 fibronectin type-III domains.,similarity:Contains 5 Ig-like C2-type (immunoglobulin-like) domains.,tissue specificity:Expressed most strongly in adult and fetal brain.,
Subcellular Location :	Cell membrane; Single-pass type I membrane protein.
Expression :	Expressed most strongly in adult and fetal brain.
Sort :	10600
No4 :	1
Host :	Rabbit
Modifications :	Unmodified

Products Images



Western blot analysis of lysates from MCF-7 and HeLa cells, using NCAM2 Antibody. The lane on the right is blocked with the synthesized peptide.



Immunohistochemical analysis of paraffin-embedded human liver cancer. 1, Antibody was diluted at 1:200(4° overnight). 2, Tris-EDTA,pH9.0 was used for antigen retrieval. 3,Secondary antibody was diluted at 1:200(room temperature, 45min).