

ABCB5 Monoclonal Antibody(11A2)

| | |
|------------------------------|--|
| Catalog No : | YM3074 |
| Reactivity : | Human |
| Applications : | WB;IHC;IF; |
| Target : | ABCB5 |
| Fields : | >>ABC transporters |
| Gene Name : | ABCB5 |
| Protein Name : | ATP-binding cassette sub-family B member 5 |
| Human Gene Id : | 340273 |
| Human Swiss Prot No : | Q2M3G0 |
| Immunogen : | Synthetic Peptide of ABCB5 |
| Specificity : | The antibody detects endogenous ABCB5 proteins. |
| Formulation : | PBS, pH 7.4, containing 0.5%BSA, 0.02% sodium azide as Preservative and 50% Glycerol. |
| Source : | Monoclonal, Mouse |
| Dilution : | WB 1:2000 IF 1:200 IHC 1:50-300 |
| Purification : | The antibody was affinity-purified from mouse ascites by affinity-chromatography using specific immunogen. |
| Storage Stability : | -15°C to -25°C/1 year(Do not lower than -25°C) |
| Observed Band : | 90kD |
| Cell Pathway : | ABC transporters; |

Background : ABCB5 belongs to the ATP-binding cassette (ABC) transporter superfamily of integral membrane proteins. These proteins participate in ATP-dependent transmembrane transport of structurally diverse molecules ranging from small ions, sugars, and peptides to more complex organic molecules (Chen et al., 2005 [PubMed 15760339]).[supplied by OMIM, Mar 2008],

Function : caution:The sequence shown here is derived from an Ensembl automatic analysis pipeline and should be considered as preliminary data.,caution:Was named ABCB1 by some authors.,function:Plasma membrane transporter able to mediate efflux from cells of the rhodamine dye and of the therapeutic drug doxorubicin. Responsible for the resistance to doxorubicin of a subset of malignant melanomas.,miscellaneous:Depletion of ABCB5 by RNAi increases the sensitivity to several drugs of a subset of melanoma cells.,similarity:Belongs to the ABC transporter family.,similarity:Belongs to the ABC transporter family. Multidrug resistance exporter (TC 3.A.1.201) subfamily.,similarity:Contains 1 ABC transmembrane type-1 domain.,similarity:Contains 1 RRM (RNA recognition motif) domain.,similarity:Contains 2 ABC transporter domains.,subunit:Component of the U11/U12 snRNPs that are part of the U12-type spliceosom

Subcellular Location : Cell membrane ; Multi-pass membrane protein .

Expression : Expressed by CD133-expressing progenitor cells among epidermal melanocytes (at protein level). Widely expressed with specific expression in pigment cells. Highly expressed in several malignant tissues: highly expressed in clinical melanomas, with low expression in normal skin. In melanoma, marks malignant melanoma-initiating cells (MMIC), in which clinical virulence resides as a consequence of unlimited self-renewal capacity, resulting in inexorable tumor progression and metastasis. Also highly expressed in a number of leukemia cells. Expressed in basal limbal epithelium.

Tag : hot

Sort : 1449

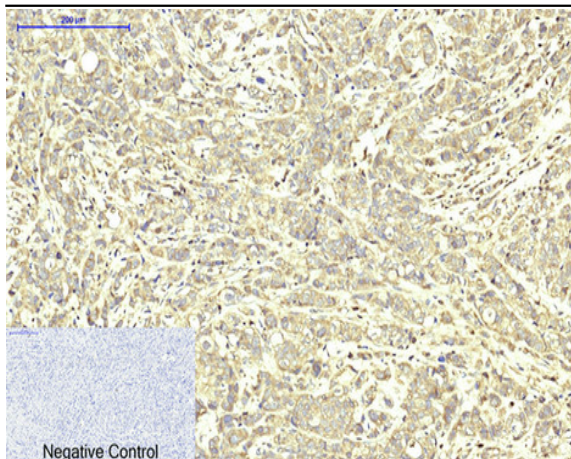
No3 : ab140667

No4 : 1

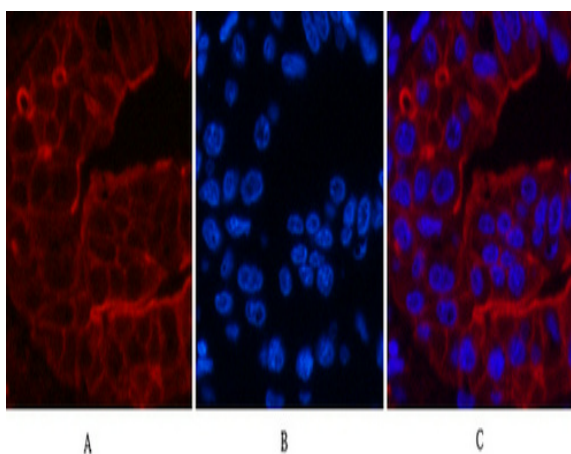
Host : Mouse

Modifications : Unmodified

Products Images



Immunohistochemical analysis of paraffin-embedded Human-breast-cancer tissue. 1, ABCB5 Monoclonal Antibody(11A2) was diluted at 1:200(4°C, overnight). 2, Sodium citrate pH 6.0 was used for antibody retrieval(>98°C, 20min). 3, Secondary antibody was diluted at 1:200(room temperature, 30min). Negative control was used by secondary antibody only.



Immunofluorescence analysis of Human-liver-cancer tissue. 1, ABCB5 Monoclonal Antibody(11A2)(red) was diluted at 1:200(4°C, overnight). 2, Cy3 labeled Secondary antibody was diluted at 1:300(room temperature, 50min). 3, Picture B: DAPI(blue) 10min. Picture A: Target. Picture B: DAPI. Picture C: merge of A+B

Western blot analysis of 1) HeLa, 2) 293T, diluted at 1:2000. cells nucleus extracted by Minute TM Cytoplasmic and Nuclear Fractionation kit (SC-003, Invent biotech, MN, USA).

