

## MEK Kinase-3 Polyclonal Antibody

<b>Catalog No :</b>	YT2708
<b>Reactivity :</b>	Human;Mouse
<b>Applications :</b>	WB;IHC;IF;ELISA
<b>Target :</b>	MEK Kinase-3
<b>Fields :</b>	>>MAPK signaling pathway;>>Neurotrophin signaling pathway;>>GnRH signaling pathway;>>Human T-cell leukemia virus 1 infection;>>PD-L1 expression and PD-1 checkpoint pathway in cancer
<b>Gene Name :</b>	MAP3K3
<b>Protein Name :</b>	Mitogen-activated protein kinase kinase kinase 3
<b>Human Gene Id :</b>	4215
<b>Human Swiss Prot No :</b>	Q99759
<b>Mouse Gene Id :</b>	26406
<b>Mouse Swiss Prot No :</b>	Q61084
<b>Immunogen :</b>	The antiserum was produced against synthesized peptide derived from human MAP3K3. AA range:101-150
<b>Specificity :</b>	MEK Kinase-3 Polyclonal Antibody detects endogenous levels of MEK Kinase-3 protein.
<b>Formulation :</b>	Liquid in PBS containing 50% glycerol, 0.5% BSA and 0.02% sodium azide.
<b>Source :</b>	Polyclonal, Rabbit,IgG
<b>Dilution :</b>	WB 1:500 - 1:2000. IHC 1:100 - 1:300. IF 1:200 - 1:1000. ELISA: 1:20000. Not yet tested in other applications.
<b>Purification :</b>	The antibody was affinity-purified from rabbit antiserum by affinity-

chromatography using epitope-specific immunogen.

---

**Concentration :** 1 mg/ml

---

**Storage Stability :** -15°C to -25°C/1 year(Do not lower than -25°C)

---

**Observed Band :** 71kD

---

**Cell Pathway :** Regulation of Actin Dynamics; SAPK\_JNK; Cell Growth; Stem cell pathway; B Cell Receptor

---

**Background :** This gene product is a 626-amino acid polypeptide that is 96.5% identical to mouse Mekk3. Its catalytic domain is closely related to those of several other kinases, including mouse Mekk2, tobacco NPK, and yeast Ste11. Northern blot analysis revealed a 4.6-kb transcript that appears to be ubiquitously expressed. This protein directly regulates the stress-activated protein kinase (SAPK) and extracellular signal-regulated protein kinase (ERK) pathways by activating SEK and MEK1/2 respectively; it does not regulate the p38 pathway. In cotransfection assays, it enhanced transcription from a nuclear factor kappa-B (NFkB)-dependent reporter gene, consistent with a role in the SAPK pathway. Alternatively spliced transcript variants encoding distinct isoforms have been observed. [provided by RefSeq, Jul 2008],

---

**Function :** catalytic activity:ATP + a protein = ADP + a phosphoprotein.,cofactor:Magnesium.,enzyme regulation:Activated by phosphorylation on Thr-530.,function:Component of a protein kinase signal transduction cascade. Mediates activation of the NF-kappa-B, AP1 and DDIT3 transcriptional regulators.,similarity:Belongs to the protein kinase superfamily. STE Ser/Thr protein kinase family. MAP kinase kinase kinase subfamily.,similarity:Contains 1 OPR domain.,similarity:Contains 1 protein kinase domain.,subunit:Binds both upstream activators and downstream substrates in multimolecular complexes. Part of a complex with MAP2K3, RAC1 and CCM2. Interacts with MAP2K5 and SPAG9.,

---

**Subcellular Location :** cytoplasm,cytosol,

---

**Expression :** Aorta,Brain,Epithelium,Kidney,Melanoma,Placenta,PNS

---

**Tag :** orthogonal

---

**Sort :** 9527

---

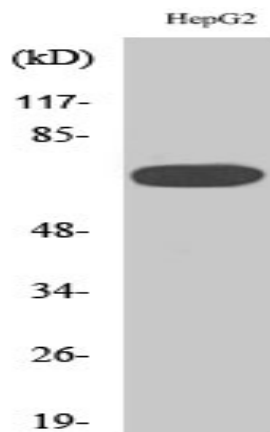
**No4 :** 1

---

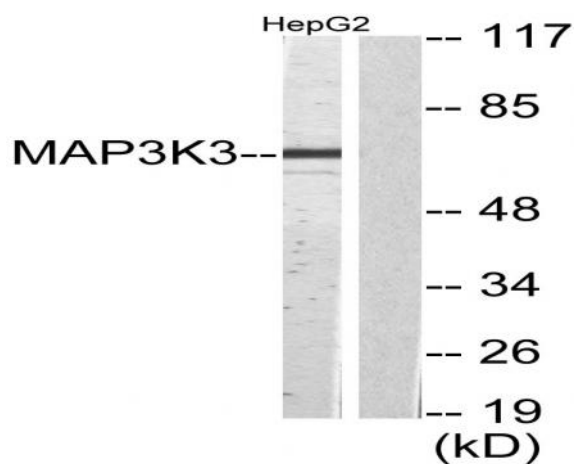
**Host :** Rabbit

---

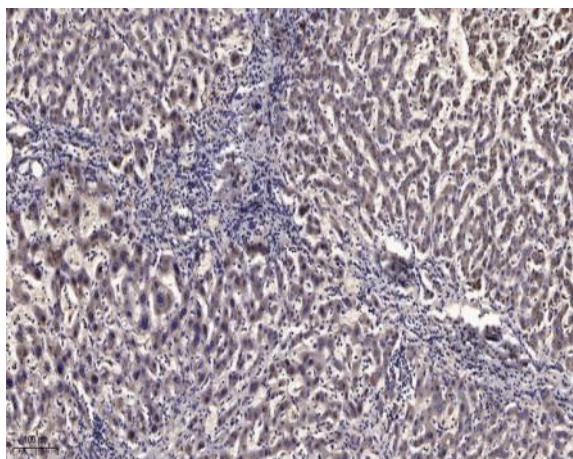
## Products Images



Western Blot analysis of various cells using MEK Kinase-3 Polyclonal Antibody diluted at 1:2000



Western blot analysis of lysates from HepG2 cells, using MAP3K3 Antibody. The lane on the right is blocked with the synthesized peptide.



Immunohistochemical analysis of paraffin-embedded human liver cancer. 1, Antibody was diluted at 1:200(4° overnight). 2, Tris-EDTA,pH9.0 was used for antigen retrieval. 3,Secondary antibody was diluted at 1:200(room temperature, 45min).