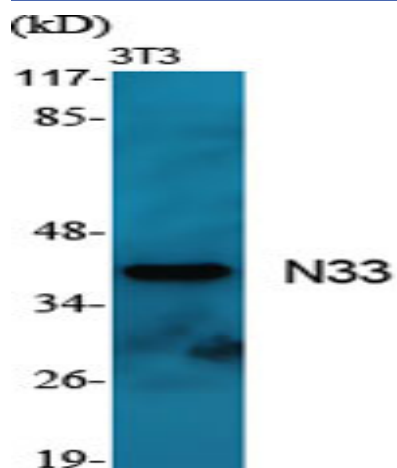


N33 Polyclonal Antibody

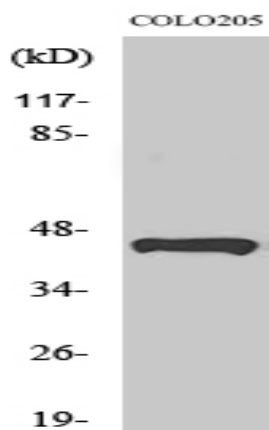
Catalog No :	YT2961
Reactivity :	Human;Mouse;Rat
Applications :	WB;IHC;IF;ELISA
Target :	N33
Fields :	>>N-Glycan biosynthesis;>>Various types of N-glycan biosynthesis;>>Metabolic pathways;>>Protein processing in endoplasmic reticulum
Gene Name :	TUSC3
Protein Name :	Tumor suppressor candidate 3
Human Gene Id :	7991
Human Swiss Prot No :	Q13454
Mouse Gene Id :	80286
Mouse Swiss Prot No :	Q8BTV1
Immunogen :	The antiserum was produced against synthesized peptide derived from human TUSC3. AA range:131-180
Specificity :	N33 Polyclonal Antibody detects endogenous levels of N33 protein.
Formulation :	Liquid in PBS containing 50% glycerol, 0.5% BSA and 0.02% sodium azide.
Source :	Polyclonal, Rabbit,IgG
Dilution :	WB 1:500 - 1:2000. IHC 1:100 - 1:300. IF 1:200 - 1:1000. ELISA: 1:10000. Not yet tested in other applications.
Purification :	The antibody was affinity-purified from rabbit antiserum by affinity-chromatography using epitope-specific immunogen.

Concentration :	1 mg/ml
Storage Stability :	-15°C to -25°C/1 year(Do not lower than -25°C)
Observed Band :	39kD
Cell Pathway :	N-Glycan biosynthesis;
Background :	<p>This gene is a candidate tumor suppressor gene. It is located within a homozygously deleted region of a metastatic prostate cancer. The gene is expressed in most nonlymphoid human tissues including prostate, lung, liver, and colon. Expression was also detected in many epithelial tumor cell lines. Two transcript variants encoding distinct isoforms have been identified for this gene. [provided by RefSeq, Jul 2008],</p>
Function :	<p>disease:Defects in TUSC3 are the cause of mental retardation non-syndromic autosomal recessive type 7 (MRT7) [MIM:611093]. Mental retardation is characterized by significantly sub-average general intellectual functioning associated with impairments in adaptive behavior and manifested during the developmental period. Non-syndromic mental retardation patients do not manifest other clinical signs.,function:May be involved in N-glycosylation through its association with N-oligosaccharyl transferase.,similarity:Belongs to the OST3/OST6 family.,subunit:Weakly associates with the oligosaccharyl transferase (OST) complex which contains at least RPN1/ribophorin I, RPN2/ribophorin II, OST48, DAD1, and either STT3A or STT3B.,tissue specificity:Expressed in most non-lymphoid cells and tissues examined, including prostate, lung, liver, colon, heart, kidney and pancreas.,</p>
Subcellular Location :	Endoplasmic reticulum membrane ; Multi-pass membrane protein .
Expression :	Expressed in most non-lymphoid cells and tissues examined, including prostate, lung, liver, colon, heart, kidney and pancreas.
Tag :	hot
Sort :	10530
No4 :	1
Host :	Rabbit
Modifications :	Unmodified

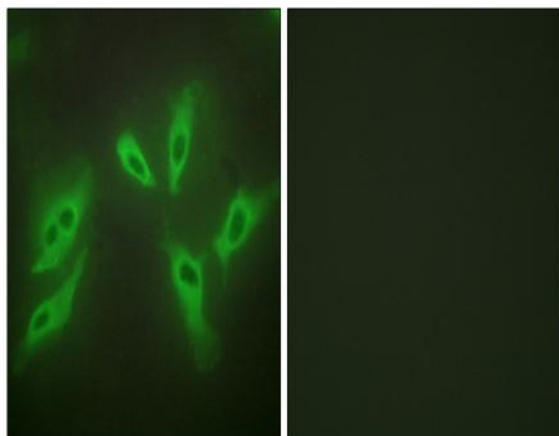
Products Images



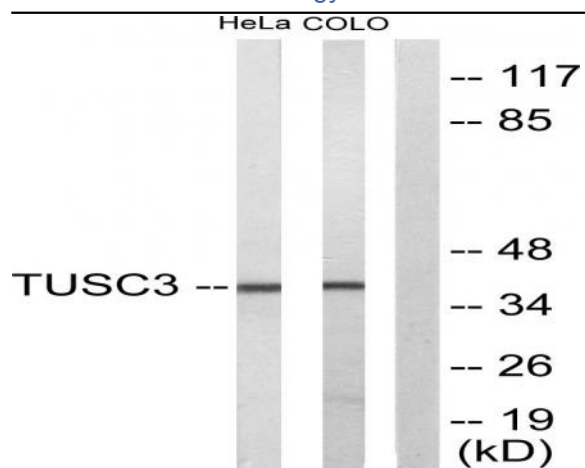
Western Blot analysis of various cells using N33 Polyclonal Antibody



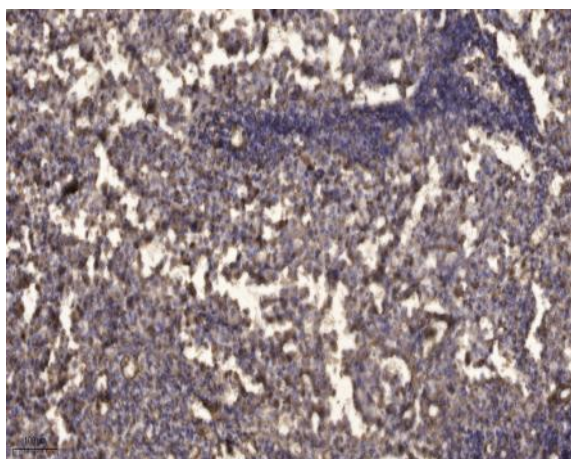
Western Blot analysis of HeLa cells using N33 Polyclonal Antibody



Immunofluorescence analysis of HeLa cells using TUSC3 Antibody. The picture on the right is blocked with the synthesized peptide.



Western blot analysis of lysates from COLO205 and HeLa cells, using TUSC3 Antibody. The lane on the right is blocked with the synthesized peptide.



Immunohistochemical analysis of paraffin-embedded human Squamous cell carcinoma of lung. 1, Antibody was diluted at 1:200(4° overnight). 2, Tris-EDTA,pH9.0 was used for antigen retrieval. 3,Secondary antibody was diluted at 1:200(room temperature, 45min).