

MZF-1 Polyclonal Antibody

Catalog No :	YT2959
Reactivity :	Human;Rat;Mouse;
Applications :	WB;IHC;IF;ELISA
Target :	MZF-1
Gene Name :	MZF1
Protein Name :	Myeloid zinc finger 1
Human Gene Id :	7593
Human Swiss Prot No :	P28698
Immunogen :	The antiserum was produced against synthesized peptide derived from human MZF-1. AA range:1-50
Specificity :	MZF-1 Polyclonal Antibody detects endogenous levels of MZF-1 protein.
Formulation :	Liquid in PBS containing 50% glycerol, 0.5% BSA and 0.02% sodium azide.
Source :	Polyclonal, Rabbit,IgG
Dilution :	WB 1:500 - 1:2000. IHC 1:100 - 1:300. ELISA: 1:10000.. IF 1:50-200
Purification :	The antibody was affinity-purified from rabbit antiserum by affinity-chromatography using epitope-specific immunogen.
Concentration :	1 mg/ml
Storage Stability :	-15°C to -25°C/1 year(Do not lower than -25°C)
Observed Band :	82kD
Background :	function:May be one regulator of transcriptional events during hemopoietic development.,induction:By retinoic acid.,similarity:Belongs to the krueppel

C2H2-type zinc-finger protein family.,similarity:Contains 1 SCAN box domain.,similarity:Contains 13 C2H2-type zinc fingers.,tissue specificity:Preferentially expressed in differentiating myeloid cells.,

Function :

function:May be one regulator of transcriptional events during hemopoietic development.,induction:By retinoic acid.,similarity:Belongs to the krueppel C2H2-type zinc-finger protein family.,similarity:Contains 1 SCAN box domain.,similarity:Contains 13 C2H2-type zinc fingers.,tissue specificity:Preferentially expressed in differentiating myeloid cells.,

Subcellular Location :

Nucleus.

Expression :

Preferentially expressed in differentiating myeloid cells. Detected in osteoblasts.

Sort :

10528

No4 :

1

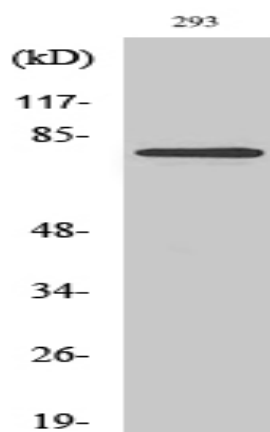
Host :

Rabbit

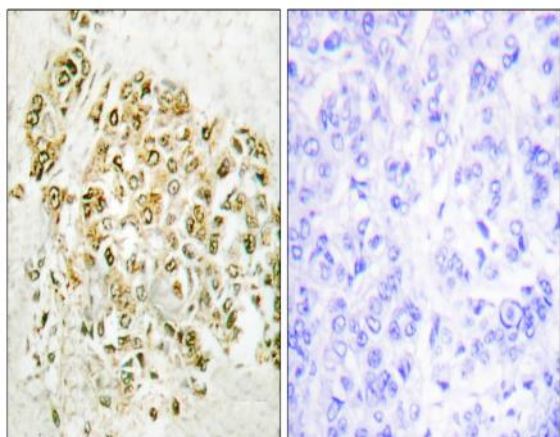
Modifications :

Unmodified

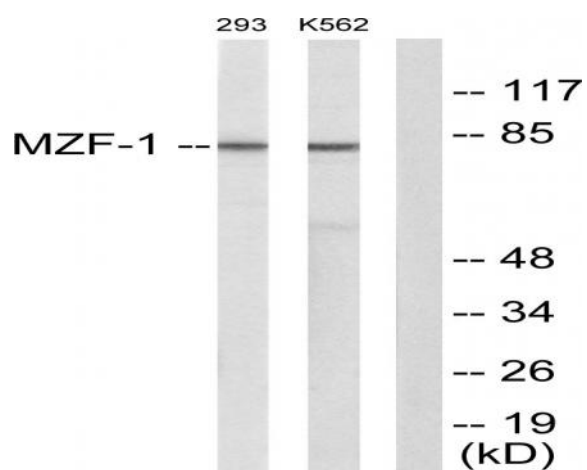
Products Images



Western Blot analysis of various cells using MZF-1 Polyclonal Antibody diluted at 1:2000 cells nucleus extracted by Minute TM Cytoplasmic and Nuclear Fractionation kit (SC-003, Inventbiotech, MN, USA).



Immunohistochemistry analysis of paraffin-embedded human breast carcinoma tissue, using MZF-1 Antibody. The picture on the right is blocked with the synthesized peptide.



Western blot analysis of lysates from 293 and K562 cells, using MZF-1 Antibody. The lane on the right is blocked with the synthesized peptide.