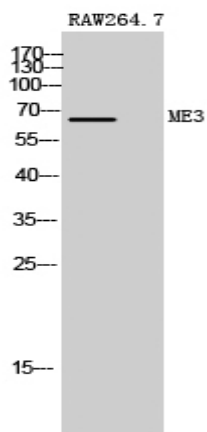


ME3 Polyclonal Antibody

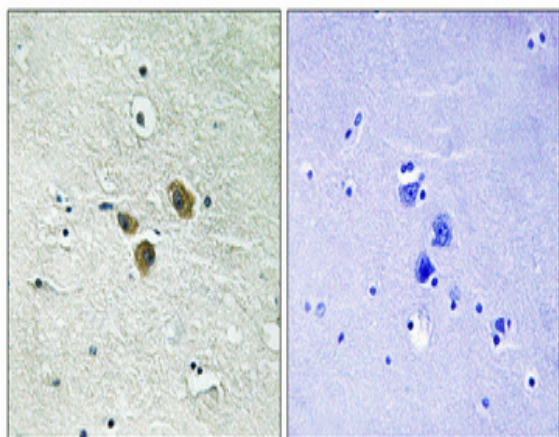
Catalog No :	YT2695
Reactivity :	Human;Mouse
Applications :	WB;IHC;IF;ELISA
Target :	ME3
Fields :	>>Pyruvate metabolism;>>Metabolic pathways;>>Carbon metabolism;>>PPAR signaling pathway
Gene Name :	ME3
Protein Name :	NADP-dependent malic enzyme mitochondrial
Human Gene Id :	10873
Human Swiss Prot No :	Q16798
Mouse Gene Id :	109264
Mouse Swiss Prot No :	Q8BMF3
Immunogen :	The antiserum was produced against synthesized peptide derived from human ME3. AA range:545-594
Specificity :	ME3 Polyclonal Antibody detects endogenous levels of ME3 protein.
Formulation :	Liquid in PBS containing 50% glycerol, 0.5% BSA and 0.02% sodium azide.
Source :	Polyclonal, Rabbit,IgG
Dilution :	WB 1:500 - 1:2000. IHC 1:100 - 1:300. ELISA: 1:40000.. IF 1:50-200
Purification :	The antibody was affinity-purified from rabbit antiserum by affinity-chromatography using epitope-specific immunogen.
Concentration :	1 mg/ml

Storage Stability :	-15°C to -25°C/1 year(Do not lower than -25°C)
Observed Band :	67kD
Cell Pathway :	Pyruvate metabolism;
Background :	Malic enzyme catalyzes the oxidative decarboxylation of malate to pyruvate using either NAD ⁺ or NADP ⁺ as a cofactor. Mammalian tissues contain 3 distinct isoforms of malic enzyme: a cytosolic NADP(+)-dependent isoform, a mitochondrial NADP(+)-dependent isoform, and a mitochondrial NAD(+)-dependent isoform. This gene encodes a mitochondrial NADP(+)-dependent isoform. Multiple alternatively spliced transcript variants have been found for this gene, but the biological validity of some variants has not been determined. [provided by RefSeq, Jul 2008],
Function :	catalytic activity:(S)-malate + NADP(+) = pyruvate + CO(2) + NADPH.,cofactor:Divalent metal cations. Prefers magnesium or manganese.,similarity:Belongs to the malic enzymes family.,tissue specificity:Expressed predominantly in organs with a low-division rate.,
Subcellular Location :	Mitochondrion matrix.
Expression :	Expressed predominantly in organs with a low-division rate.
Sort :	9500
No4 :	1
Host :	Rabbit
Modifications :	Unmodified

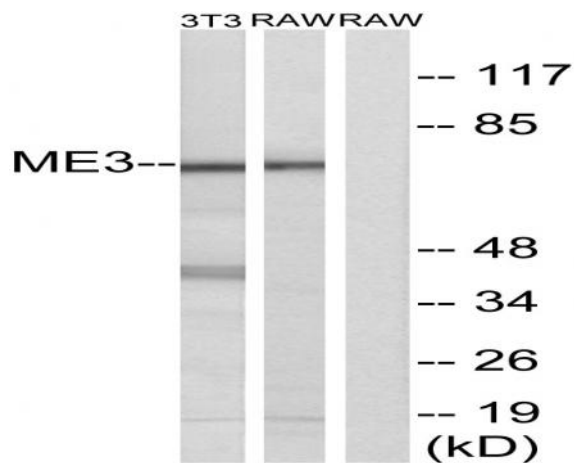
Products Images



Western Blot analysis of RAW264.7 cells using ME3 Polyclonal Antibody



Immunohistochemical analysis of paraffin-embedded Human brain. Antibody was diluted at 1:100(4° overnight). High-pressure and temperature Tris-EDTA,pH8.0 was used for antigen retrieval. Negative control (right) obtained from antibody was pre-absorbed by immunogen peptide.



Western blot analysis of lysates from RAW264.7 and NIH/3T3 cells, using ME3 Antibody. The lane on the right is blocked with the synthesized peptide.