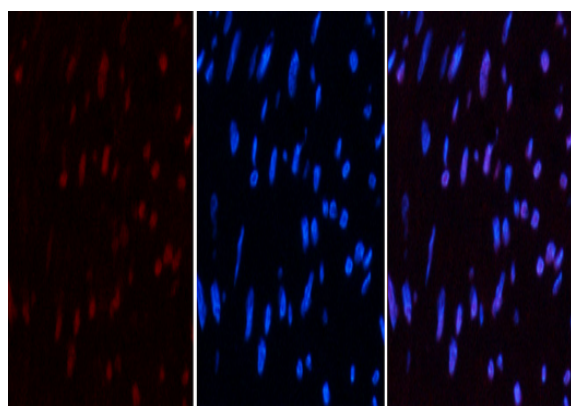


CD10 Monoclonal Antibody(5B8)

Catalog No :	YM3072
Reactivity :	Human;Mouse;Rat
Applications :	IF;IHC
Target :	CD10
Fields :	>>Renin-angiotensin system;>>Hematopoietic cell lineage;>>Protein digestion and absorption;>>Alzheimer disease
Gene Name :	MME
Protein Name :	Neprilysin
Human Gene Id :	4311
Human Swiss Prot No :	P08473
Mouse Gene Id :	17380
Mouse Swiss Prot No :	Q61391
Rat Gene Id :	24590
Rat Swiss Prot No :	P07861
Immunogen :	Synthetic Peptide of CD10
Specificity :	The antibody detects endogenous CD10 proteins.
Formulation :	PBS, pH 7.4, containing 0.5%BSA, 0.02% sodium azide as Preservative and 50% Glycerol.
Source :	Monoclonal, Mouse
Dilution :	IF 1:50-200. IHC 1:50-200

Purification :	The antibody was affinity-purified from mouse ascites by affinity-chromatography using specific immunogen.
Storage Stability :	-15°C to -25°C/1 year(Do not lower than -25°C)
Molecularweight :	86kD
Cell Pathway :	Renin-angiotensin system;Hematopoietic cell lineage;Alzheimer's disease;
Background :	This gene encodes a common acute lymphocytic leukemia antigen that is an important cell surface marker in the diagnosis of human acute lymphocytic leukemia (ALL). This protein is present on leukemic cells of pre-B phenotype, which represent 85% of cases of ALL. This protein is not restricted to leukemic cells, however, and is found on a variety of normal tissues. It is a glycoprotein that is particularly abundant in kidney, where it is present on the brush border of proximal tubules and on glomerular epithelium. The protein is a neutral endopeptidase that cleaves peptides at the amino side of hydrophobic residues and inactivates several peptide hormones including glucagon, enkephalins, substance P, neurotensin, oxytocin, and bradykinin. This gene, which encodes a 100-kD type II transmembrane glycoprotein, exists in a single copy of greater than 45 kb. The 5' untranslated region of this
Function :	catalytic activity:Preferential cleavage of polypeptides between hydrophobic residues, particularly with Phe or Tyr at P1'.,cofactor:Binds 1 zinc ion per subunit.,disease:Important cell surface marker in the diagnostic of human acute lymphocytic leukemia.,enzyme regulation:Inhibited in a dose dependent manner by opiorphin.,function:Thermolysin-like specificity, but is almost confined on acting on polypeptides of up to 30 amino acids. Biologically important in the destruction of opioid peptides such as Met- and Leu-enkephalins by cleavage of a Gly-Phe bond. Involved in the degradation of atrial natriuretic factor (ANF).,similarity:Belongs to the peptidase M13 family.,
Subcellular Location :	Cell membrane; Single-pass type II membrane protein.
Expression :	Adrenal cortex,Brain,Kidney,Placenta,
Sort :	3347
No4 :	1
Host :	Mouse
Modifications :	Unmodified

Products Images

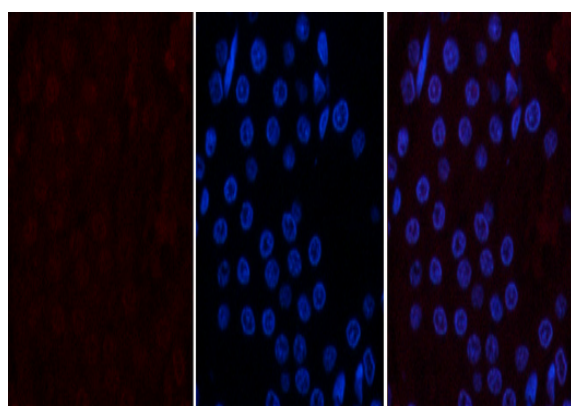


A

B

C

Immunofluorescence analysis of human-uterus tissue. 1,CD10 Monoclonal Antibody(5B8)(red) was diluted at 1:200(4°C,overnight). 2, Cy3 labeled Secondary antibody was diluted at 1:300(room temperature, 50min).3, Picture B: DAPI(blue) 10min. Picture A:Target. Picture B: DAPI. Picture C: merge of A+B

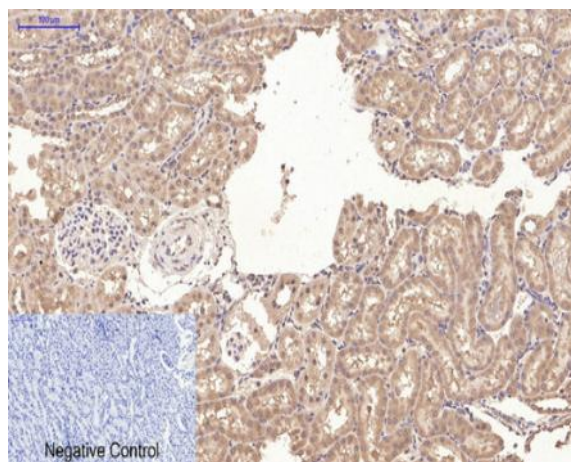


A

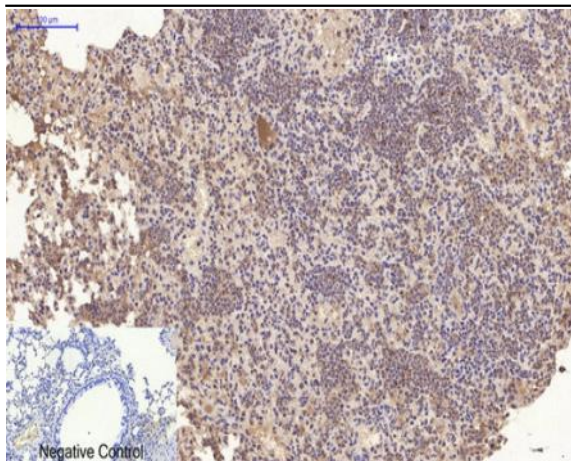
B

C

Immunofluorescence analysis of rat-kidney tissue. 1,CD10 Monoclonal Antibody(5B8)(red) was diluted at 1:200(4°C,overnight). 2, Cy3 labeled Secondary antibody was diluted at 1:300(room temperature, 50min).3, Picture B: DAPI(blue) 10min. Picture A:Target. Picture B: DAPI. Picture C: merge of A+B



Immunohistochemical analysis of paraffin-embedded Rat-kidney tissue. 1,CD10 Monoclonal Antibody(5B8) was diluted at 1:200(4°C,overnight). 2, Sodium citrate pH 6.0 was used for antibody retrieval(>98°C,20min). 3,Secondary antibody was diluted at 1:200(room temperature, 30min). Negative control was used by secondary antibody only.



Immunohistochemical analysis of paraffin-embedded Mouse-lung tissue. 1, CD10 Monoclonal Antibody (5B8) was diluted at 1:200 (4 °C, overnight). 2, Sodium citrate pH 6.0 was used for antibody retrieval (>98 °C, 20 min). 3, Secondary antibody was diluted at 1:200 (room temperature, 30 min). Negative control was used by secondary antibody only.