

MYL7 Polyclonal Antibody

Catalog No :	YT2938
Reactivity :	Human;Mouse;Rat;Monkey
Applications :	WB;IHC
Target :	MYL7
Fields :	>>Focal adhesion;>>Leukocyte transendothelial migration;>>Regulation of actin cytoskeleton;>>Shigellosis;>>Salmonella infection
Gene Name :	MYL7
Protein Name :	Myosin regulatory light chain 2 atrial isoform
Human Gene Id :	58498
Human Swiss Prot No :	Q01449
Mouse Gene Id :	17898
Mouse Swiss Prot No :	Q9QVP4
Immunogen :	The antiserum was produced against synthesized peptide derived from human MYL7. AA range:111-160
Specificity :	MYL7 Polyclonal Antibody detects endogenous levels of MYL7 protein.
Formulation :	Liquid in PBS containing 50% glycerol, 0.5% BSA and 0.02% sodium azide.
Source :	Polyclonal, Rabbit,IgG
Dilution :	WB 1:500-2000;IHC 1:50-300
Purification :	The antibody was affinity-purified from rabbit antiserum by affinity-chromatography using epitope-specific immunogen.
Concentration :	1 mg/ml

Storage Stability : -15°C to -25°C/1 year(Do not lower than -25°C)

Observed Band : 18kD

Cell Pathway : Focal adhesion;Tight junction;Leukocyte transendothelial migration;Regulates Actin and Cytoskeleton;

Background : miscellaneous:This chain binds calcium.,similarity:Contains 3 EF-hand domains.,subunit:Myosin is an hexamer of 2 heavy chains and 4 light chains.,tissue specificity:Predominantly expressed in adult atrial muscle.,

Function : miscellaneous:This chain binds calcium.,similarity:Contains 3 EF-hand domains.,subunit:Myosin is an hexamer of 2 heavy chains and 4 light chains.,tissue specificity:Predominantly expressed in adult atrial muscle.,

Subcellular Location : cytosol,myosin complex,A band,dendritic spine,

Expression : Predominantly expressed in adult atrial muscle.

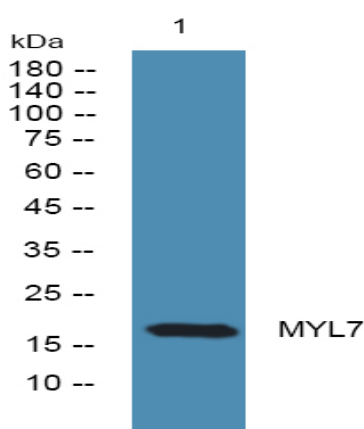
Sort : 10475

No4 : 1

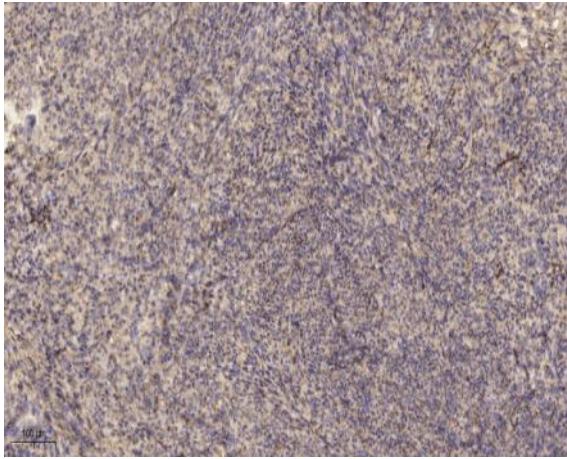
Host : Rabbit

Modifications : Unmodified

Products Images



Western blot analysis of lysates from SH-SY5Y cells, primary antibody was diluted at 1:1000, 4° over night



Immunohistochemical analysis of paraffin-embedded human uterus. 1, Antibody was diluted at 1:200(4° overnight). 2, Tris-EDTA,pH9.0 was used for antigen retrieval. 3,Secondary antibody was diluted at 1:200(room temperature, 45min).