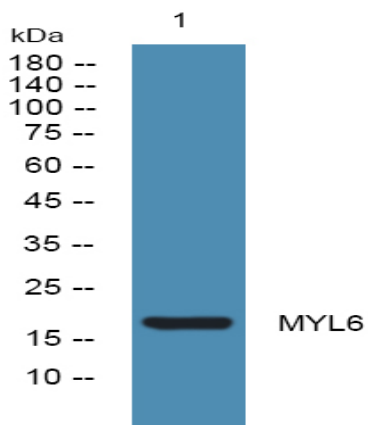


MYL6 Polyclonal Antibody

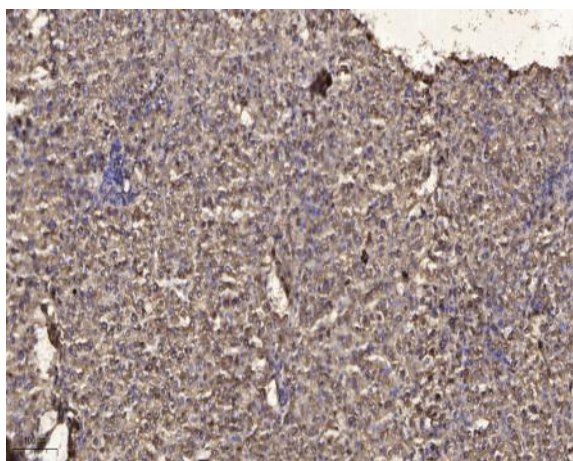
| | |
|------------------------------|--|
| Catalog No : | YT2937 |
| Reactivity : | Human;Mouse;Rat |
| Applications : | WB;IHC |
| Target : | MYL6 |
| Fields : | >>Vascular smooth muscle contraction;>>Tight junction;>>Oxytocin signaling pathway |
| Gene Name : | MYL6 |
| Protein Name : | Myosin light polypeptide 6 |
| Human Gene Id : | 4637 |
| Human Swiss Prot No : | P60660 |
| Mouse Gene Id : | 17904 |
| Mouse Swiss Prot No : | Q60605 |
| Rat Gene Id : | 362816 |
| Rat Swiss Prot No : | Q64119 |
| Immunogen : | Synthesized peptide derived from the Internal region of human MYL6. |
| Specificity : | MYL6 Polyclonal Antibody detects endogenous levels of MYL6 protein. |
| Formulation : | Liquid in PBS containing 50% glycerol, 0.5% BSA and 0.02% sodium azide. |
| Source : | Polyclonal, Rabbit,IgG |
| Dilution : | WB 1:500-2000;IHC 1:50-300 |

| | |
|-------------------------------|---|
| Purification : | The antibody was affinity-purified from rabbit antiserum by affinity-chromatography using epitope-specific immunogen. |
| Concentration : | 1 mg/ml |
| Storage Stability : | -15°C to -25°C/1 year(Do not lower than -25°C) |
| Observed Band : | 17kD |
| Cell Pathway : | Vascular smooth muscle contraction; |
| Background : | Myosin is a hexameric ATPase cellular motor protein. It is composed of two heavy chains, two nonphosphorylatable alkali light chains, and two phosphorylatable regulatory light chains. This gene encodes a myosin alkali light chain that is expressed in smooth muscle and non-muscle tissues. Genomic sequences representing several pseudogenes have been described and two transcript variants encoding different isoforms have been identified for this gene. [provided by RefSeq, Jul 2008], |
| Function : | function:Regulatory light chain of myosin. Does not bind calcium.,similarity:Contains 3 EF-hand domains.,subunit:Myosin is an hexamer of 2 heavy chains and 4 light chains., |
| Subcellular Location : | cytosol,brush border,membrane,myosin complex,unconventional myosin complex,extracellular matrix,vesicle,extracellular exosome, |
| Expression : | B-cell lymphoma,Brain,Duodenum,Eye,Lung,Placenta, |
| Sort : | 10474 |
| No4 : | 1 |
| Host : | Rabbit |
| Modifications : | Unmodified |

Products Images



Western blot analysis of lysates from Jurkat cells, primary antibody was diluted at 1:1000, 4° over night



Immunohistochemical analysis of paraffin-embedded human liver cancer. 1, Antibody was diluted at 1:200(4° overnight). 2, Tris-EDTA,pH9.0 was used for antigen retrieval. 3,Secondary antibody was diluted at 1:200(room temperature, 45min).