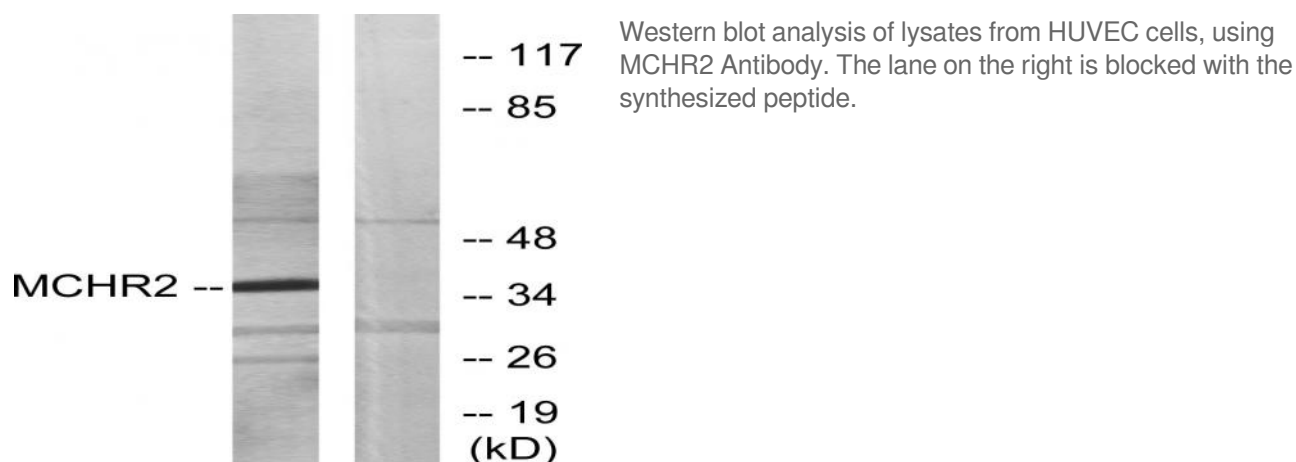


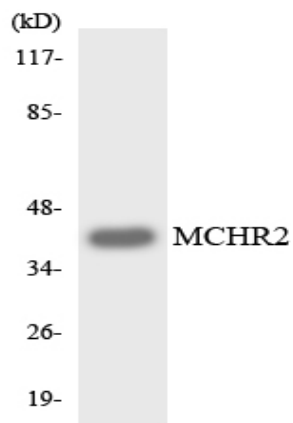
MCH-2R Polyclonal Antibody

Catalog No :	YT2678
Reactivity :	Human
Applications :	WB;ELISA;IHC
Target :	MCH-2R
Fields :	>>Neuroactive ligand-receptor interaction
Gene Name :	MCHR2
Protein Name :	Melanin-concentrating hormone receptor 2
Human Gene Id :	84539
Human Swiss Prot No :	Q969V1
Immunogen :	The antiserum was produced against synthesized peptide derived from human MCHR2. AA range:291-340
Specificity :	MCH-2R Polyclonal Antibody detects endogenous levels of MCH-2R protein.
Formulation :	Liquid in PBS containing 50% glycerol, 0.5% BSA and 0.02% sodium azide.
Source :	Polyclonal, Rabbit,IgG
Dilution :	WB 1:500-2000;IHC 1:50-300; ELISA 2000-20000
Purification :	The antibody was affinity-purified from rabbit antiserum by affinity-chromatography using epitope-specific immunogen.
Concentration :	1 mg/ml
Storage Stability :	-15°C to -25°C/1 year(Do not lower than -25°C)
Observed Band :	39kD

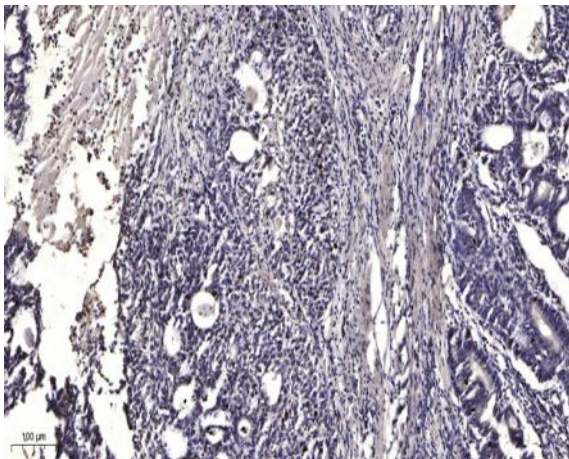
Cell Pathway :	Neuroactive ligand-receptor interaction;
Background :	function:Receptor for melanin-concentrating hormone, coupled to G proteins that activate phosphoinositide hydrolysis.,similarity:Belongs to the G-protein coupled receptor 1 family.,tissue specificity:Specifically expressed in the brain, with highest levels in cerebral cortex, hippocampus and amygdala. No expression detected in the cerebellum, thalamus or hypothalamus.,
Function :	function:Receptor for melanin-concentrating hormone, coupled to G proteins that activate phosphoinositide hydrolysis.,similarity:Belongs to the G-protein coupled receptor 1 family.,tissue specificity:Specifically expressed in the brain, with highest levels in cerebral cortex, hippocampus and amygdala. No expression detected in the cerebellum, thalamus or hypothalamus.,
Subcellular Location :	Cell membrane; Multi-pass membrane protein.
Expression :	Specifically expressed in the brain, with highest levels in cerebral cortex, hippocampus and amygdala. No expression detected in the cerebellum, thalamus or hypothalamus.
Sort :	9446
No4 :	1
Host :	Rabbit
Modifications :	Unmodified

Products Images





Western blot analysis of the lysates from HeLa cells using MCHR2 antibody.



Immunohistochemical analysis of paraffin-embedded human Gastric adenocarcinoma. 1, Antibody was diluted at 1:200(4° overnight). 2, Tris-EDTA,pH9.0 was used for antigen retrieval. 3,Secondary antibody was diluted at 1:200(room temperature, 45min).