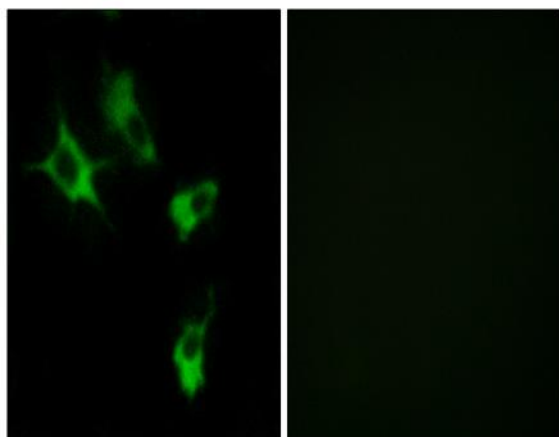


MAST4 Polyclonal Antibody

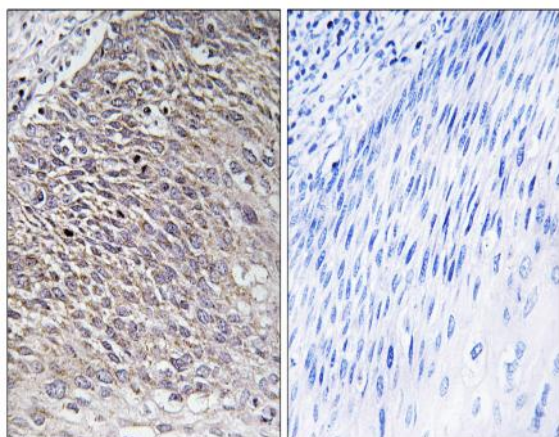
Catalog No :	YT2660
Reactivity :	Human;Mouse
Applications :	WB;IHC;IF;ELISA
Target :	MAST4
Gene Name :	MAST4
Protein Name :	Microtubule-associated serine/threonine-protein kinase 4
Human Gene Id :	375449
Human Swiss Prot No :	O15021
Mouse Gene Id :	328329
Mouse Swiss Prot No :	Q811L6
Immunogen :	The antiserum was produced against synthesized peptide derived from human MAST4. AA range:251-300
Specificity :	MAST4 Polyclonal Antibody detects endogenous levels of MAST4 protein.
Formulation :	Liquid in PBS containing 50% glycerol, 0.5% BSA and 0.02% sodium azide.
Source :	Polyclonal, Rabbit,IgG
Dilution :	WB 1:500 - 1:2000. IHC 1:100 - 1:300. IF 1:200 - 1:1000. ELISA: 1:5000. Not yet tested in other applications.
Purification :	The antibody was affinity-purified from rabbit antiserum by affinity-chromatography using epitope-specific immunogen.
Concentration :	1 mg/ml
Storage Stability :	-15°C to -25°C/1 year(Do not lower than -25°C)

Observed Band :	36kD
Background :	This gene encodes a member of the microtubule-associated serine/threonine protein kinases. The proteins in this family contain a domain that gives the kinase the ability to determine its own scaffold to control the effects of their kinase activities. Alternative splicing results in multiple transcript variants encoding different isoforms. [provided by RefSeq, Mar 2014],
Function :	catalytic activity:ATP + a protein = ADP + a phosphoprotein.,caution:The sequence shown here is derived from an Ensembl automatic analysis pipeline and should be considered as preliminary data.,cofactor:Magnesium.,PTM:Phosphorylated upon DNA damage, probably by ATM or ATR.,similarity:Belongs to the protein kinase superfamily. AGC Ser/Thr protein kinase family.,similarity:Contains 1 AGC-kinase C-terminal domain.,similarity:Contains 1 PDZ (DHR) domain.,similarity:Contains 1 protein kinase domain.,tissue specificity:Highly expressed in most normal human tissues, with an exception of in testis, small intestine, colon and peripheral blood leukocyte.,
Subcellular Location :	Cytoplasm .
Expression :	Highly expressed in most normal human tissues, with an exception of in testis, small intestine, colon and peripheral blood leukocyte.
Sort :	9416
No4 :	1
Host :	Rabbit
Modifications :	Unmodified

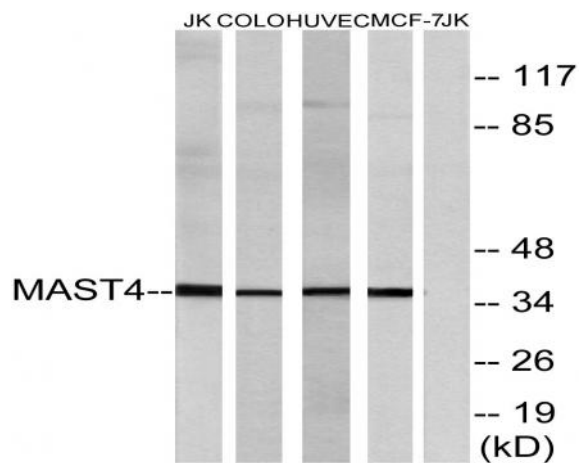
Products Images



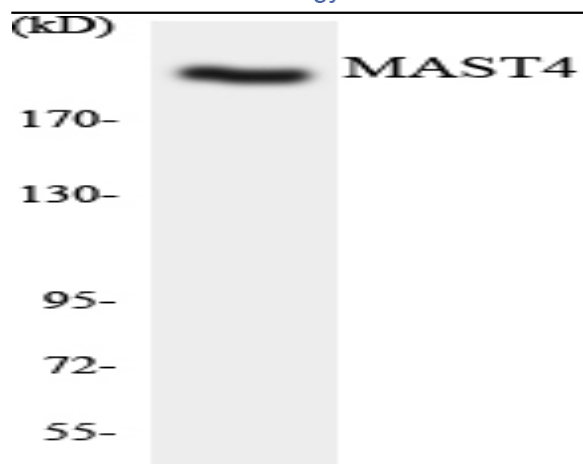
Immunofluorescence analysis of COS7 cells, using MAST4 Antibody. The picture on the right is blocked with the synthesized peptide.



Immunohistochemistry analysis of paraffin-embedded human testis tissue, using MAST4 Antibody. The picture on the right is blocked with the synthesized peptide.



Western blot analysis of lysates from Jurkat, COLO, HUVEC, and MCF-7 cells, using MAST4 Antibody. The lane on the right is blocked with the synthesized peptide.



Western blot analysis of the lysates from HT-29 cells using MAST4 antibody.