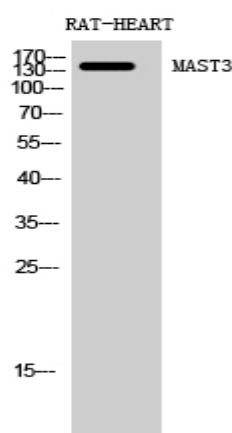


**MAST3 Polyclonal Antibody**

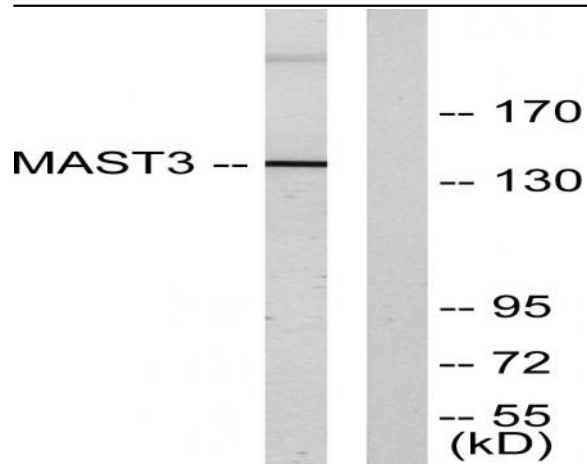
<b>Catalog No :</b>	YT2659
<b>Reactivity :</b>	Human;Mouse
<b>Applications :</b>	WB;ELISA
<b>Target :</b>	MAST3
<b>Gene Name :</b>	MAST3
<b>Protein Name :</b>	Microtubule-associated serine/threonine-protein kinase 3
<b>Human Gene Id :</b>	23031
<b>Human Swiss Prot No :</b>	O60307
<b>Mouse Gene Id :</b>	546071
<b>Mouse Swiss Prot No :</b>	Q3U214
<b>Immunogen :</b>	The antiserum was produced against synthesized peptide derived from human MAST3. AA range:1031-1080
<b>Specificity :</b>	MAST3 Polyclonal Antibody detects endogenous levels of MAST3 protein.
<b>Formulation :</b>	Liquid in PBS containing 50% glycerol, 0.5% BSA and 0.02% sodium azide.
<b>Source :</b>	Polyclonal, Rabbit,IgG
<b>Dilution :</b>	WB 1:500 - 1:2000. ELISA: 1:10000. Not yet tested in other applications.
<b>Purification :</b>	The antibody was affinity-purified from rabbit antiserum by affinity-chromatography using epitope-specific immunogen.
<b>Concentration :</b>	1 mg/ml
<b>Storage Stability :</b>	-15°C to -25°C/1 year(Do not lower than -25°C)

**Observed Band :** 143kD**Background :** catalytic activity:ATP + a protein = ADP + a phosphoprotein.,caution:It is uncertain whether Met-1, Met-171 or Met-172 is the initiator.,cofactor:Magnesium.,similarity:Belongs to the protein kinase superfamily. AGC Ser/Thr protein kinase family.,similarity:Contains 1 AGC-kinase C-terminal domain.,similarity:Contains 1 PDZ (DHR) domain.,similarity:Contains 1 protein kinase domain.,subunit:Interacts with PTEN.,**Function :** catalytic activity:ATP + a protein = ADP + a phosphoprotein.,caution:It is uncertain whether Met-1, Met-171 or Met-172 is the initiator.,cofactor:Magnesium.,similarity:Belongs to the protein kinase superfamily. AGC Ser/Thr protein kinase family.,similarity:Contains 1 AGC-kinase C-terminal domain.,similarity:Contains 1 PDZ (DHR) domain.,similarity:Contains 1 protein kinase domain.,subunit:Interacts with PTEN.,**Subcellular Location :** intracellular,**Expression :** Brain,**Sort :** 9415**No4 :** 1**Host :** Rabbit**Modifications :** Unmodified

## Products Images



Western Blot analysis of RAT-HEART cells using MAST3 Polyclonal Antibody diluted at 1:500



Western blot analysis of lysates from Jurkat cells, using MAST3 Antibody. The lane on the right is blocked with the synthesized peptide.