

MARCH4 Polyclonal Antibody

Catalog No :	YT2645
Reactivity :	Human;Mouse
Applications :	IHC;IF;ELISA
Target :	MARCH4
Gene Name :	MARCH4
Protein Name :	E3 ubiquitin-protein ligase MARCH4
Human Gene Id :	57574
Human Swiss Prot No :	Q9P2E8
Mouse Gene Id :	381270
Mouse Swiss Prot No :	Q80TE3
Immunogen :	The antiserum was produced against synthesized peptide derived from human MARCH4. AA range:301-350
Specificity :	MARCH4 Polyclonal Antibody detects endogenous levels of 40606 protein.
Formulation :	Liquid in PBS containing 50% glycerol, 0.5% BSA and 0.02% sodium azide.
Source :	Polyclonal, Rabbit,IgG
Dilution :	IHC 1:100 - 1:300. ELISA: 1:40000.. IF 1:50-200
Purification :	The antibody was affinity-purified from rabbit antiserum by affinity-chromatography using epitope-specific immunogen.
Concentration :	1 mg/ml
Storage Stability :	-15°C to -25°C/1 year(Do not lower than -25°C)

Molecularweight : 46kD

Background : MARCH4 is a member of the MARCH family of membrane-bound E3 ubiquitin ligases (EC 6.3.2.19). MARCH enzymes add ubiquitin (see MIM 191339) to target lysines in substrate proteins, thereby signaling their vesicular transport between membrane compartments. MARCH4 reduces surface accumulation of several membrane glycoproteins by directing them to the endosomal compartment (Bartee et al., 2004 [PubMed 14722266]).[supplied by OMIM, Apr 2010],

Function : domain:The RING-CH-type zinc finger domain is required for E3 ligase activity.,function:E3 ubiquitin-protein ligase that may mediate ubiquitination of MHC-I and CD4, and promote their subsequent endocytosis and sorting to lysosomes via multivesicular bodies. E3 ubiquitin ligases accept ubiquitin from an E2 ubiquitin-conjugating enzyme in the form of a thioester and then directly transfer the ubiquitin to targeted substrates.,pathway:Protein modification; protein ubiquitination.,similarity:Contains 1 RING-CH-type zinc finger.,tissue specificity:Expressed in brain and placenta.,

Subcellular Location : Golgi apparatus membrane ; Multi-pass membrane protein .

Expression : Expressed in brain and placenta.

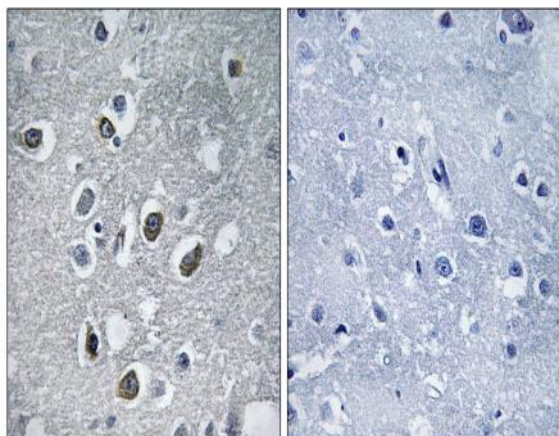
Sort : 9384

No4 : 1

Host : Rabbit

Modifications : Unmodified

Products Images



Immunohistochemistry analysis of paraffin-embedded human brain tissue, using MARCH4 Antibody. The picture on the right is blocked with the synthesized peptide.