

MAP-9 Polyclonal Antibody

Catalog No :	YT2638
Reactivity :	Human;Mouse
Applications :	WB;ELISA
Target :	MAP-9
Gene Name :	MAP9
Protein Name :	Microtubule-associated protein 9
Human Gene Id :	79884
Human Swiss Prot No :	Q49MG5
Mouse Swiss Prot No :	Q3TRR0
Immunogen :	The antiserum was produced against synthesized peptide derived from human MAP9. AA range:121-170
Specificity :	MAP-9 Polyclonal Antibody detects endogenous levels of MAP-9 protein.
Formulation :	Liquid in PBS containing 50% glycerol, 0.5% BSA and 0.02% sodium azide.
Source :	Polyclonal, Rabbit,IgG
Dilution :	WB 1:500 - 1:2000. ELISA: 1:40000. Not yet tested in other applications.
Purification :	The antibody was affinity-purified from rabbit antiserum by affinity-chromatography using epitope-specific immunogen.
Concentration :	1 mg/ml
Storage Stability :	-15°C to -25°C/1 year(Do not lower than -25°C)
Observed Band :	75kD

Background : ASAP is a microtubule-associated protein required for spindle function, mitotic progression, and cytokinesis (Saffin et al., 2005 [PubMed 16049101]).[supplied by OMIM, Mar 2008],

Function : developmental stage:Constitutively expressed during the cell cycle.,function:Involved in organization of the bipolar mitotic spindle. Required for bipolar spindle assembly, mitosis progression and cytokinesis. May act by stabilizing interphase microtubules.,PTM:Phosphorylated upon DNA damage, probably by ATM or ATR.,subcellular location:Localizes to microtubules in interphase, associates with the mitotic spindle during mitosis, localizes to the central body during cytokinesis.,subunit:Binds to purified microtubules via its C-terminus.,

Subcellular Location : Cytoplasm . Cytoplasm, cytoskeleton . Cytoplasm, cytoskeleton, spindle . Localizes to microtubules in interphase, associates with the mitotic spindle during mitosis, localizes to the central body during cytokinesis.

Expression : Amygdala,Bone marrow,Brain,

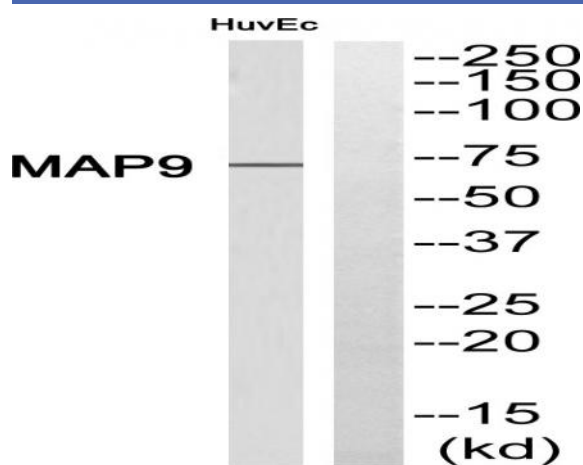
Sort : 9373

No4 : 1

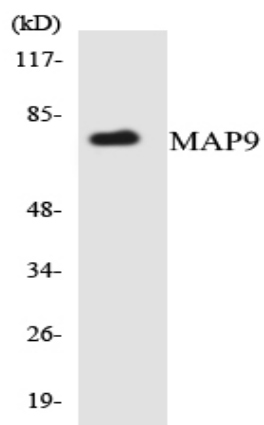
Host : Rabbit

Modifications : Unmodified

Products Images



Western blot analysis of MAP9 Antibody. The lane on the right is blocked with the MAP9 peptide.



Western blot analysis of the lysates from HUVEC cells using MAP9 antibody.