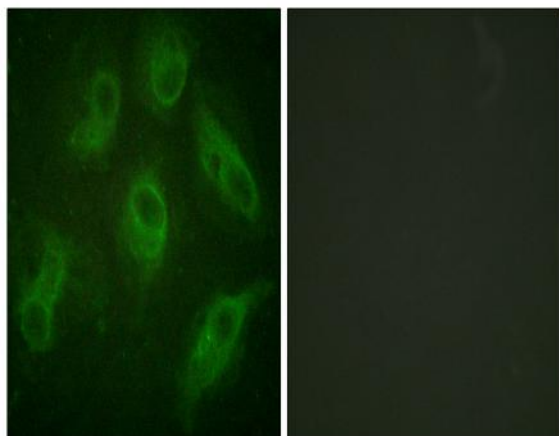


MAP-4 Polyclonal Antibody

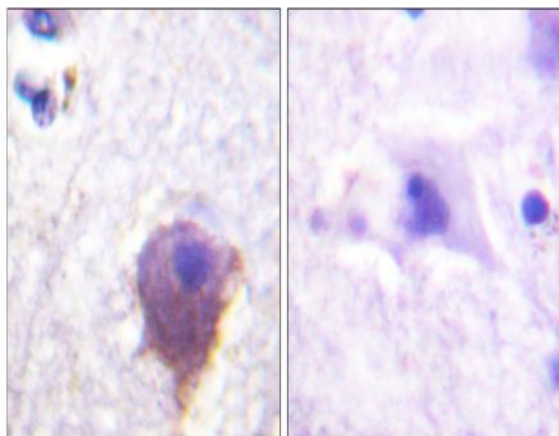
| | |
|------------------------------|---|
| Catalog No : | YT2637 |
| Reactivity : | Human;Mouse;Rat |
| Applications : | IHC;IF;ELISA |
| Target : | MAP4 |
| Gene Name : | MAP4 |
| Protein Name : | Microtubule-associated protein 4 |
| Human Gene Id : | 4134 |
| Human Swiss Prot No : | P27816 |
| Mouse Gene Id : | 17758 |
| Mouse Swiss Prot No : | P27546 |
| Rat Gene Id : | 367171 |
| Rat Swiss Prot No : | Q5M7W5 |
| Immunogen : | The antiserum was produced against synthesized peptide derived from human MAP4. AA range:662-711 |
| Specificity : | MAP-4 Polyclonal Antibody detects endogenous levels of MAP-4 protein. |
| Formulation : | Liquid in PBS containing 50% glycerol, 0.5% BSA and 0.02% sodium azide. |
| Source : | Polyclonal, Rabbit,IgG |
| Dilution : | IHC 1:100 - 1:300. IF 1:200 - 1:1000. ELISA: 1:5000. Not yet tested in other applications. |
| Purification : | The antibody was affinity-purified from rabbit antiserum by affinity-chromatography using epitope-specific immunogen. |

| | |
|-------------------------------|--|
| Concentration : | 1 mg/ml |
| Storage Stability : | -15°C to -25°C/1 year(Do not lower than -25°C) |
| Molecularweight : | 121kD |
| Observed Band : | 121kD |
| Background : | <p>The protein encoded by this gene is a major non-neuronal microtubule-associated protein. This protein contains a domain similar to the microtubule-binding domains of neuronal microtubule-associated protein (MAP2) and microtubule-associated protein tau (MAPT/TAU). This protein promotes microtubule assembly, and has been shown to counteract destabilization of interphase microtubule catastrophe promotion. Cyclin B was found to interact with this protein, which targets cell division cycle 2 (CDC2) kinase to microtubules. The phosphorylation of this protein affects microtubule properties and cell cycle progression. Multiple transcript variants encoding different isoforms have been found for this gene. [provided by RefSeq, Aug 2008],</p> |
| Function : | <p>alternative products:Additional isoforms seem to exist,caution:The sequence shown here is derived from an Ensembl automatic analysis pipeline and should be considered as preliminary data.,function:Non-neuronal microtubule-associated protein. Promotes microtubule assembly.,PTM:Phosphorylated upon DNA damage, probably by ATM or ATR (By similarity). Phosphorylation on Ser-787 negatively regulates MAP4 activity to promote microtubule assembly. Isoform 3 is phosphorylated on Ser-337 and Ser-338.,similarity:Contains 3 Tau/MAP repeats.,similarity:Contains 4 Tau/MAP repeats.,</p> |
| Subcellular Location : | <p>Cytoplasm, cytoskeleton . Cytoplasm, cytoskeleton, microtubule organizing center . Recruitment to microtubule is inhibited by microtubules polyglutamylation.</p> |
| Expression : | <p>Bone marrow,Brain,Cerebellum,Colon carcinoma,Epithelium,Eye,Heart,Liver,Lym</p> |
| Sort : | 9372 |
| No4 : | 1 |
| Host : | Rabbit |
| Modifications : | Unmodified |

Products Images



Immunofluorescence analysis of HeLa cells, using MAP4 Antibody. The picture on the right is blocked with the synthesized peptide.



Immunohistochemistry analysis of paraffin-embedded human brain tissue, using MAP4 Antibody. The picture on the right is blocked with the synthesized peptide.