

Malic enzyme 1 Polyclonal Antibody

Catalog No :	YT2629
Reactivity :	Human;Mouse;Rat
Applications :	WB;ELISA
Target :	Malic enzyme 1
Fields :	>>Pyruvate metabolism;>>Metabolic pathways;>>Carbon metabolism;>>PPAR signaling pathway
Gene Name :	ME1
Protein Name :	NADP-dependent malic enzyme
Human Gene Id :	4199
Human Swiss Prot No :	P48163
Mouse Gene Id :	17436
Mouse Swiss Prot No :	P06801
Rat Swiss Prot No :	P13697
Immunogen :	The antiserum was produced against synthesized peptide derived from human ME1. AA range:468-517
Specificity :	Malic enzyme 1 Polyclonal Antibody detects endogenous levels of Malic enzyme 1 protein.
Formulation :	Liquid in PBS containing 50% glycerol, 0.5% BSA and 0.02% sodium azide.
Source :	Polyclonal, Rabbit,IgG
Dilution :	WB 1:500 - 1:2000. ELISA: 1:40000. Not yet tested in other applications.
Purification :	The antibody was affinity-purified from rabbit antiserum by affinity-

chromatography using epitope-specific immunogen.

Concentration : 1 mg/ml

Storage Stability : -15°C to -25°C/1 year(Do not lower than -25°C)

Observed Band : 64kD

Cell Pathway : Pyruvate metabolism;PPAR;

Background : This gene encodes a cytosolic, NADP-dependent enzyme that generates NADPH for fatty acid biosynthesis. The activity of this enzyme, the reversible oxidative decarboxylation of malate, links the glycolytic and citric acid cycles. The regulation of expression for this gene is complex. Increased expression can result from elevated levels of thyroid hormones or by higher proportions of carbohydrates in the diet. [provided by RefSeq, Jul 2008],

Function : catalytic activity:(S)-malate + NADP(+) = pyruvate + CO(2) + NADPH.,cofactor:Divalent metal cations. Prefers magnesium or manganese.,online information:The Singapore human mutation and polymorphism database,similarity:Belongs to the malic enzymes family.,subunit:Homotetramer.,tissue specificity:Expressed in all tissues tested including liver, placenta and white adipose tissue.,

Subcellular Location : Cytoplasm .

Expression : Expressed in all tissues tested including liver, placenta and white adipose tissue.

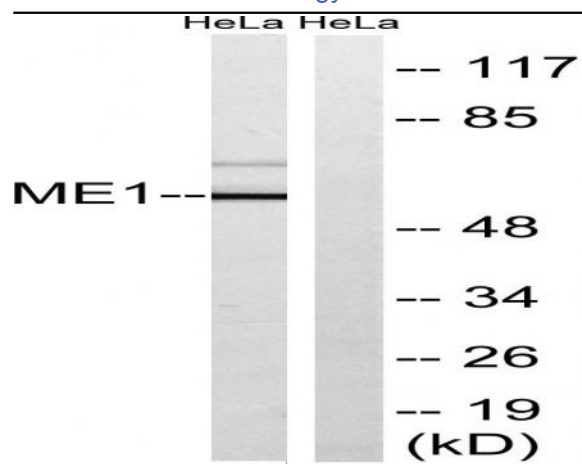
Sort : 9344

No4 : 1

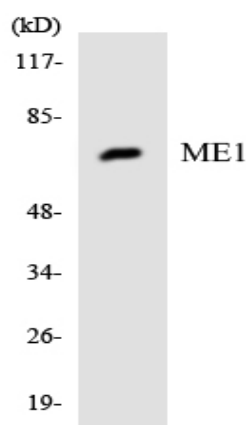
Host : Rabbit

Modifications : Unmodified

Products Images



Western blot analysis of lysates from HeLa cells, using ME1 Antibody. The lane on the right is blocked with the synthesized peptide.



Western blot analysis of the lysates from HeLa cells using ME1 antibody.