

LUCA15 Polyclonal Antibody

Catalog No :	YT2604
Reactivity :	Human;Mouse
Applications :	WB;IHC;IF;ELISA
Target :	LUCA15
Gene Name :	RBM5
Protein Name :	RNA-binding protein 5
Human Gene Id :	10181
Human Swiss Prot No :	P52756
Mouse Gene Id :	83486
Mouse Swiss Prot No :	Q91YE7
Immunogen :	The antiserum was produced against synthesized peptide derived from human RBM5. AA range:226-275
Specificity :	LUCA15 Polyclonal Antibody detects endogenous levels of LUCA15 protein.
Formulation :	Liquid in PBS containing 50% glycerol, 0.5% BSA and 0.02% sodium azide.
Source :	Polyclonal, Rabbit,IgG
Dilution :	WB 1:500 - 1:2000. IHC 1:100 - 1:300. ELISA: 1:10000.. IF 1:50-200
Purification :	The antibody was affinity-purified from rabbit antiserum by affinity-chromatography using epitope-specific immunogen.
Concentration :	1 mg/ml
Storage Stability :	-15°C to -25°C/1 year(Do not lower than -25°C)

Observed Band : 92kD

Background : This gene is a candidate tumor suppressor gene which encodes a nuclear RNA binding protein that is a component of the spliceosome A complex. The encoded protein plays a role in the induction of cell cycle arrest and apoptosis through pre-mRNA splicing of multiple target genes including the tumor suppressor protein p53. This gene is located within the tumor suppressor region 3p21.3, and may play a role in the inhibition of tumor transformation and progression of several malignancies including lung cancer. [provided by RefSeq, Oct 2011],

Function : function:Component of the spliceosome A complex. Regulates alternative splicing of a number of mRNAs. May modulate splice site pairing after recruitment of the U1 and U2 snRNPs to the 5' and 3' splice sites of the intron. May both positively and negatively regulate apoptosis by regulating the alternative splicing of several genes involved in this process, including FAS and CASP2/caspase-2. In the case of FAS, promotes exclusion of exon 6 thereby producing a soluble form of FAS that inhibits apoptosis. In the case of CASP2/caspase-2, promotes exclusion of exon 9 thereby producing a catalytically active form of CASP2/Caspase-2 that induces apoptosis.,sequence caution:Wrong choice of CDS.,similarity:Belongs to the RBM5/RBM10 family.,similarity:Contains 1 C2H2-type zinc finger.,similarity:Contains 1 G-patch domain.,similarity:Contains 1 RanBP2-type zinc finger.,similarity:Contains 2 RRM (RNA

Subcellular Location : Nucleus .

Expression : Isoform 5 is widely expressed in normal tissues and is expressed at increased levels in T-leukemic cell lines.

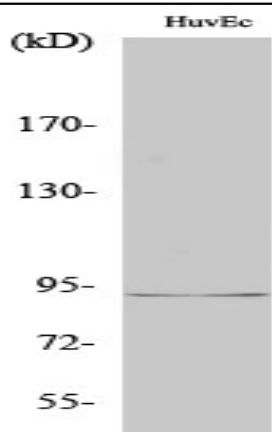
Sort : 9287

No4 : 1

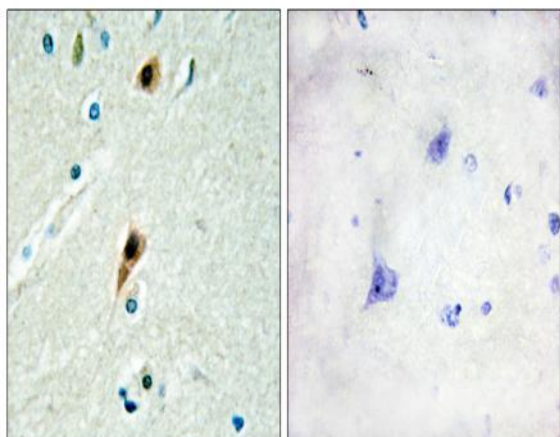
Host : Rabbit

Modifications : Unmodified

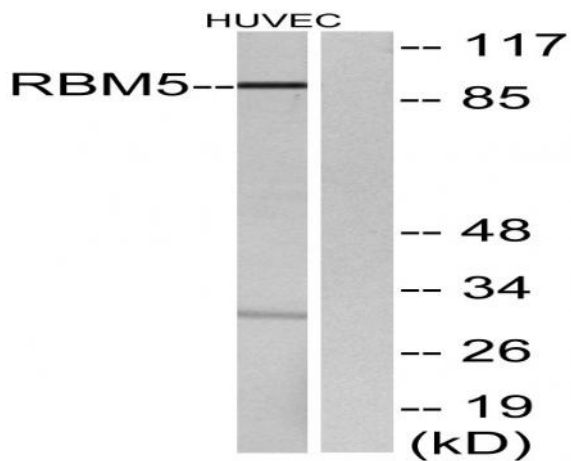
Products Images



Western Blot analysis of various cells using LUCA15 Polyclonal Antibody cells nucleus extracted by Minute TM Cytoplasmic and Nuclear Fractionation kit (SC-003, Inventbiotech, MN, USA).



Immunohistochemistry analysis of paraffin-embedded human brain tissue, using RBM5 Antibody. The picture on the right is blocked with the synthesized peptide.



Western blot analysis of lysates from HUVEC cells, using RBM5 Antibody. The lane on the right is blocked with the synthesized peptide.