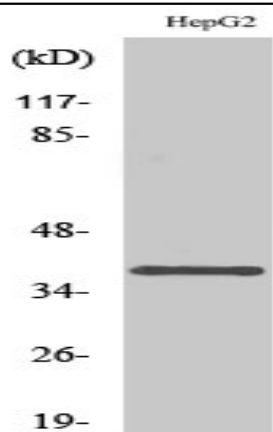


L-type Ca⁺⁺ CP γ 7 Polyclonal Antibody

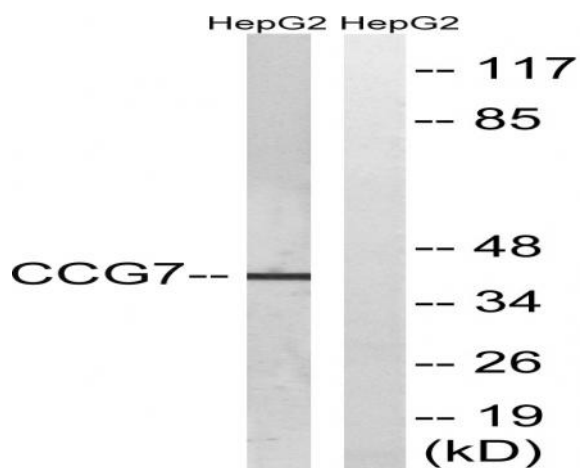
Catalog No :	YT2600
Reactivity :	Human;Mouse;Rat
Applications :	WB;ELISA
Target :	L-type Ca ⁺⁺ CP γ 7
Fields :	>>MAPK signaling pathway;>>Cardiac muscle contraction;>>Adrenergic signaling in cardiomyocytes;>>Oxytocin signaling pathway;>>Hypertrophic cardiomyopathy;>>Arrhythmogenic right ventricular cardiomyopathy;>>Dilated cardiomyopathy
Gene Name :	CACNG7
Protein Name :	Voltage-dependent calcium channel gamma-7 subunit
Human Gene Id :	59284
Human Swiss Prot No :	P62955
Mouse Gene Id :	81904
Mouse Swiss Prot No :	P62956
Rat Gene Id :	140728
Rat Swiss Prot No :	P62957
Immunogen :	The antiserum was produced against synthesized peptide derived from human CACNG7. AA range:198-247
Specificity :	L-type Ca ⁺⁺ CP γ 7 Polyclonal Antibody detects endogenous levels of L-type Ca ⁺⁺ CP γ 7 protein.
Formulation :	Liquid in PBS containing 50% glycerol, 0.5% BSA and 0.02% sodium azide.
Source :	Polyclonal, Rabbit,IgG

Dilution :	WB 1:500 - 1:2000. ELISA: 1:20000. Not yet tested in other applications.
Purification :	The antibody was affinity-purified from rabbit antiserum by affinity-chromatography using epitope-specific immunogen.
Concentration :	1 mg/ml
Storage Stability :	-15°C to -25°C/1 year(Do not lower than -25°C)
Observed Band :	40kD
Cell Pathway :	MAPK_ERK_Growth;MAPK_G_Protein;Cardiac muscle contraction;Hypertrophic cardiomyopathy (HCM);Arrhythmogenic right ventricular cardiomyopathy (ARVC);Dilated cardiomyopathy;
Background :	calcium voltage-gated channel auxiliary subunit gamma 7(CACNG7) Homo sapiens The protein encoded by this gene is a type II transmembrane AMPA receptor regulatory protein (TARP). TARPs regulate both trafficking and channel gating of the AMPA receptors. This gene is part of a functionally diverse eight-member protein subfamily of the PMP-22/EMP/MP20 family and is located in a cluster with two family members, a type I TARP and a calcium channel gamma subunit. [provided by RefSeq, Dec 2010],
Function :	function:Thought to stabilize the calcium channel in an inactivated (closed) state.,similarity:Belongs to the PMP-22/EMP/MP20 family. CACNG subfamily.,subunit:The L-type calcium channel is composed of five subunits: alpha-1, alpha-2/delta, beta and gamma.,tissue specificity:Widely expressed.,
Subcellular Location :	Cell membrane ; Multi-pass membrane protein .
Expression :	Detected in heart left ventricle (PubMed:21127204). Widely expressed.
Sort :	9282
No4 :	1
Host :	Rabbit
Modifications :	Unmodified

Products Images



Western Blot analysis of various cells using L-type Ca^{++} CP $\gamma 7$ Polyclonal Antibody diluted at 1:1000



Western blot analysis of lysates from HepG2 cells, using CACNG7 Antibody. The lane on the right is blocked with the synthesized peptide.