

## LTK Polyclonal Antibody

<b>Catalog No :</b>	YT2598
<b>Reactivity :</b>	Human;Mouse
<b>Applications :</b>	WB;IHC;IF;ELISA
<b>Target :</b>	LTK
<b>Gene Name :</b>	LTK
<b>Protein Name :</b>	Leukocyte tyrosine kinase receptor
<b>Human Gene Id :</b>	4058
<b>Human Swiss Prot No :</b>	P29376
<b>Mouse Gene Id :</b>	17005
<b>Mouse Swiss Prot No :</b>	P08923
<b>Immunogen :</b>	The antiserum was produced against synthesized peptide derived from human LTK. AA range:206-255
<b>Specificity :</b>	LTK Polyclonal Antibody detects endogenous levels of LTK protein.
<b>Formulation :</b>	Liquid in PBS containing 50% glycerol, 0.5% BSA and 0.02% sodium azide.
<b>Source :</b>	Polyclonal, Rabbit,IgG
<b>Dilution :</b>	WB 1:500 - 1:2000. IHC 1:100 - 1:300. IF 1:200 - 1:1000. ELISA: 1:5000. Not yet tested in other applications.
<b>Purification :</b>	The antibody was affinity-purified from rabbit antiserum by affinity-chromatography using epitope-specific immunogen.
<b>Concentration :</b>	1 mg/ml
<b>Storage Stability :</b>	-15°C to -25°C/1 year(Do not lower than -25°C)

**Observed Band :** 92kD

**Background :** leukocyte receptor tyrosine kinase(LTK) Homo sapiens The protein encoded by this gene is a member of the ros/insulin receptor family of tyrosine kinases. Tyrosine-specific phosphorylation of proteins is a key to the control of diverse pathways leading to cell growth and differentiation. Multiple transcript variants encoding different isoforms have been found for this gene. [provided by RefSeq, Oct 2008],

**Function :** alternative products:Additional isoforms seem to exist,catalytic activity:ATP + a [protein]-L-tyrosine = ADP + a [protein]-L-tyrosine phosphate.,function:The exact function of this protein is not known. It is probably a receptor with a tyrosine-protein kinase activity.,similarity:Belongs to the protein kinase superfamily. Tyr protein kinase family. Insulin receptor subfamily.,similarity:Contains 1 protein kinase domain.,tissue specificity:Expressed in non-hematopoietic cell lines and T- and B-cell lines.,

**Subcellular Location :** Cell membrane ; Single-pass type I membrane protein .

**Expression :** Expressed in non-hematopoietic cell lines and T- and B-cell lines.

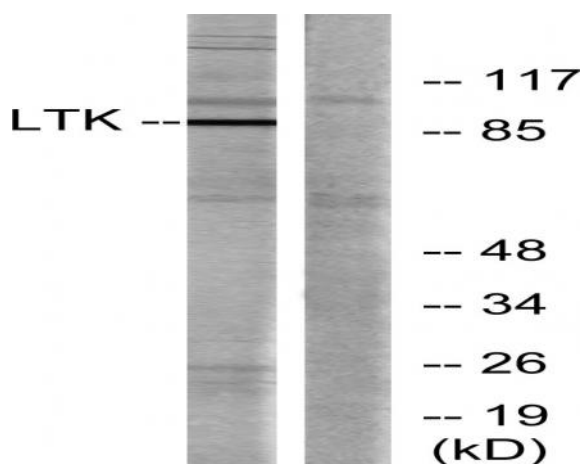
**Sort :** 9278

**No4 :** 1

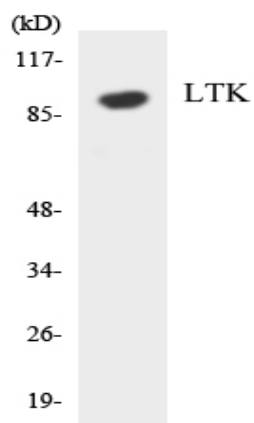
**Host :** Rabbit

**Modifications :** Unmodified

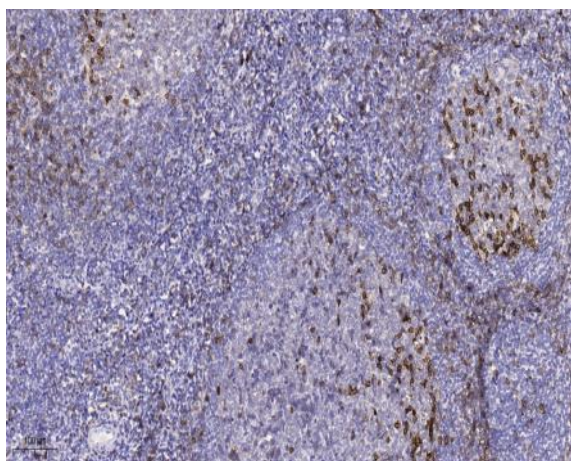
## Products Images



Western blot analysis of lysates from Jurkat cells, using LTK Antibody. The lane on the right is blocked with the synthesized peptide.



Western blot analysis of the lysates from HeLa cells using LTK antibody.



Immunohistochemical analysis of paraffin-embedded human tonsil. 1, Antibody was diluted at 1:200(4° overnight). 2, Tris-EDTA,pH9.0 was used for antigen retrieval. 3,Secondary antibody was diluted at 1:200(room temperature, 45min).