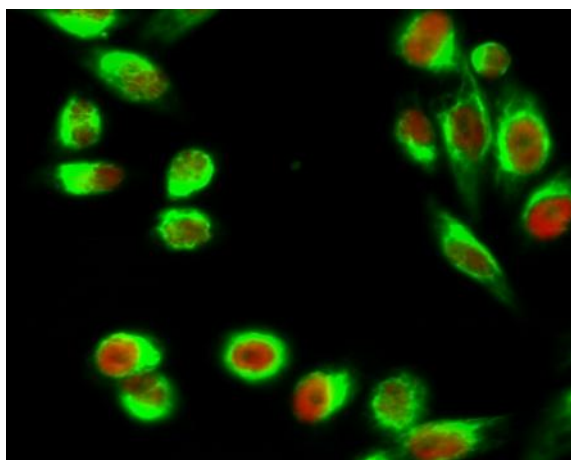


Kif 7 Monoclonal Antibody(3F8)

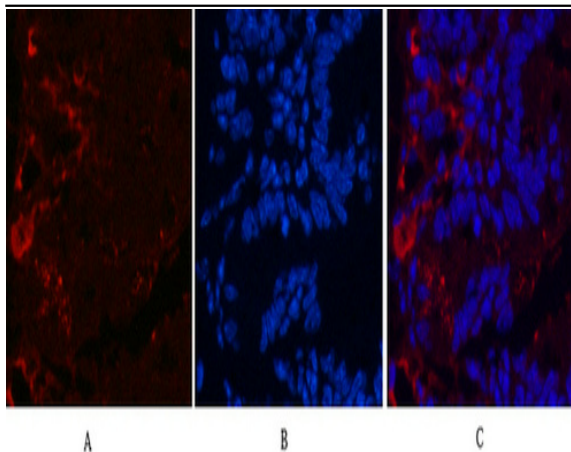
Catalog No :	YM3063
Reactivity :	Human;Mouse;Rat
Applications :	IHC;IF
Target :	Kif 7
Fields :	>>Hedgehog signaling pathway;>>Pathways in cancer;>>Basal cell carcinoma
Gene Name :	KIF7
Protein Name :	Kinesin-like protein KIF7
Human Gene Id :	374654
Human Swiss Prot No :	Q2M1P5
Mouse Gene Id :	16576
Mouse Swiss Prot No :	B7ZNG0
Immunogen :	Synthetic Peptide of Kif 7
Specificity :	The antibody detects endogenous Kif 7 proteins.
Formulation :	PBS, pH 7.4, containing 0.5%BSA, 0.02% sodium azide as Preservative and 50% Glycerol.
Source :	Monoclonal, Mouse
Dilution :	IHC 1:50-200. IF 1:50-200
Purification :	The antibody was affinity-purified from mouse ascites by affinity-chromatography using specific immunogen.
Storage Stability :	-15°C to -25°C/1 year(Do not lower than -25°C)

Background :	This gene encodes a cilia-associated protein belonging to the kinesin family. This protein plays a role in the sonic hedgehog (SHH) signaling pathway through the regulation of GLI transcription factors. It functions as a negative regulator of the SHH pathway by preventing inappropriate activation of GLI2 in the absence of ligand, and as a positive regulator by preventing the processing of GLI3 into its repressor form. Mutations in this gene have been associated with various ciliopathies. [provided by RefSeq, Oct 2011],
Function :	similarity:Belongs to the kinesin-like protein family. KIF27 subfamily.,similarity:Contains 1 kinesin-motor domain.,tissue specificity:Embryonic stem cells, melanotic melanoma and Jurkat T-cells.,
Subcellular Location :	Cell projection, cilium . Cytoplasm, cytoskeleton, cilium basal body . Localizes to the cilium tip.
Expression :	Embryonic stem cells, melanotic melanoma and Jurkat T-cells. Expressed in heart, lung, liver, kidney, testis, retina, placenta, pancreas, colon, small intestine, prostate and thymus.
Sort :	8910
No4 :	1
Host :	Mouse
Modifications :	Unmodified

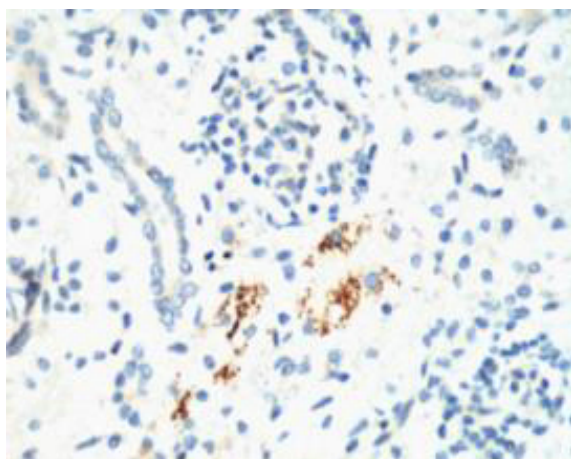
Products Images



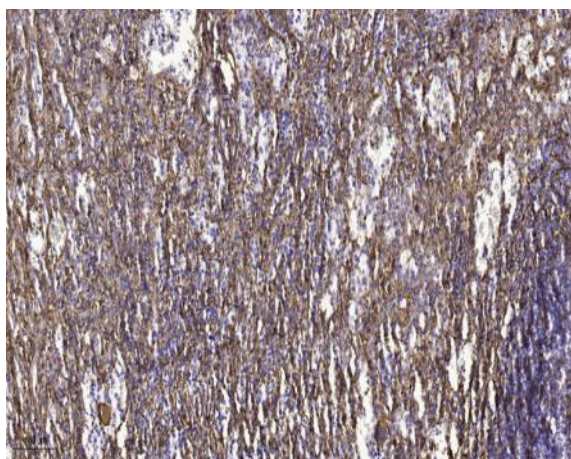
Immunofluorescence analysis of HeLa cell. 1, C/EBP β Polyclonal Antibody (red) was diluted at 1:200 (4° overnight). Kif 7 Monoclonal Antibody (3F8) (green) was diluted at 1:200 (4° overnight). 2, Goat Anti Rabbit Alexa Fluor 594 Catalog:RS3611 was diluted at 1:1000 (room temperature, 50min). Goat Anti Mouse Alexa Fluor 488 Catalog:RS3208 was diluted at 1:1000 (room temperature, 50min).



Immunofluorescence analysis of Mouse-colon tissue. 1, Kif 7 Monoclonal Antibody(3F8)(red) was diluted at 1:200(4°C, overnight). 2, Cy3 labeled Secondary antibody was diluted at 1:300(room temperature, 50min). 3, Picture B: DAPI(blue) 10min. Picture A: Target. Picture B: DAPI. Picture C: merge of A+B



IHC staining of Mouse Kidney tissue, diluted at 1:200.



Immunohistochemical analysis of paraffin-embedded human spleen tissue. 1, primary Antibody was diluted at 1:200(4°C overnight). 2, Sodium citrate pH 6.0 was used for antigen retrieval(>98°C, 20min). 3, Secondary antibody was diluted at 1:200