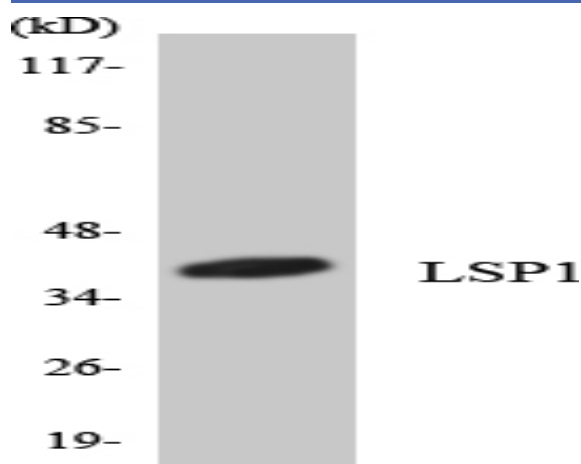


LSP1 Polyclonal Antibody

Catalog No :	YT2596
Reactivity :	Human;Mouse
Applications :	WB;ELISA
Target :	LSP1
Fields :	>>C-type lectin receptor signaling pathway;>>Tuberculosis
Gene Name :	LSP1
Protein Name :	Lymphocyte-specific protein 1
Human Gene Id :	4046
Human Swiss Prot No :	P33241
Mouse Swiss Prot No :	P19973
Immunogen :	The antiserum was produced against synthesized peptide derived from human LSP1. AA range:104-153
Specificity :	LSP1 Polyclonal Antibody detects endogenous levels of LSP1 protein.
Formulation :	Liquid in PBS containing 50% glycerol, 0.5% BSA and 0.02% sodium azide.
Source :	Polyclonal, Rabbit,IgG
Dilution :	WB 1:500 - 1:2000. ELISA: 1:5000. Not yet tested in other applications.
Purification :	The antibody was affinity-purified from rabbit antiserum by affinity-chromatography using epitope-specific immunogen.
Concentration :	1 mg/ml
Storage Stability :	-15°C to -25°C/1 year(Do not lower than -25°C)

Observed Band : 37kD**Background :** This gene encodes an intracellular F-actin binding protein. The protein is expressed in lymphocytes, neutrophils, macrophages, and endothelium and may regulate neutrophil motility, adhesion to fibrinogen matrix proteins, and transendothelial migration. Alternative splicing results in multiple transcript variants encoding different isoforms. [provided by RefSeq, Jul 2008],**Function :** function:May play a role in mediating neutrophil activation and chemotaxis.,PTM:Phosphorylated by casein kinase II, protein kinase C and MAPKAPK2. Phosphorylation by PKC induces translocation from membrane to cytoplasm. Phosphorylation by MAPKAPK2 may regulate neutrophil chemotaxis.,subunit:Binds actin.,tissue specificity:Activated T-lymphocytes.,**Subcellular Location :** Cell membrane; Peripheral membrane protein; Cytoplasmic side.**Expression :** Activated T-lymphocytes.**Sort :** 9275**No4 :** 1**Host :** Rabbit**Modifications :** Unmodified

Products Images



Western blot analysis of the lysates from Jurkat cells using LSP1 antibody.