

## LRRK1 Polyclonal Antibody

<b>Catalog No :</b>	YT2594
<b>Reactivity :</b>	Human;Mouse
<b>Applications :</b>	IHC;IF;ELISA
<b>Target :</b>	LRRK1
<b>Gene Name :</b>	LRRK1
<b>Protein Name :</b>	Leucine-rich repeat serine/threonine-protein kinase 1
<b>Human Gene Id :</b>	79705
<b>Human Swiss Prot No :</b>	Q38SD2
<b>Mouse Swiss Prot No :</b>	Q3UHC2
<b>Immunogen :</b>	The antiserum was produced against synthesized peptide derived from human LRRK1. AA range:361-410
<b>Specificity :</b>	LRRK1 Polyclonal Antibody detects endogenous levels of LRRK1 protein.
<b>Formulation :</b>	Liquid in PBS containing 50% glycerol, 0.5% BSA and 0.02% sodium azide.
<b>Source :</b>	Polyclonal, Rabbit,IgG
<b>Dilution :</b>	IHC 1:100 - 1:300. IF 1:200 - 1:1000. ELISA: 1:5000. Not yet tested in other applications.
<b>Purification :</b>	The antibody was affinity-purified from rabbit antiserum by affinity-chromatography using epitope-specific immunogen.
<b>Concentration :</b>	1 mg/ml
<b>Storage Stability :</b>	-15°C to -25°C/1 year(Do not lower than -25°C)
<b>Molecularweight :</b>	228kD

**Background :** catalytic activity:ATP + a protein = ADP + a phosphoprotein.,cofactor:Magnesium or manganese.,enzyme regulation:Binding of GTP stimulates kinase activity.,PTM:Autophosphorylated.,similarity:Belongs to the protein kinase superfamily. TKL Ser/Thr protein kinase family. ROCO subfamily.,similarity:Contains 1 protein kinase domain.,similarity:Contains 1 Roc domain.,similarity:Contains 11 LRR (leucine-rich) repeats.,similarity:Contains 4 ANK repeats.,

**Function :** catalytic activity:ATP + a protein = ADP + a phosphoprotein.,cofactor:Magnesium or manganese.,enzyme regulation:Binding of GTP stimulates kinase activity.,PTM:Autophosphorylated.,similarity:Belongs to the protein kinase superfamily. TKL Ser/Thr protein kinase family. ROCO subfamily.,similarity:Contains 1 protein kinase domain.,similarity:Contains 1 Roc domain.,similarity:Contains 11 LRR (leucine-rich) repeats.,similarity:Contains 4 ANK repeats.,

**Subcellular Location :** Cytoplasm .

**Expression :** Brain,Cervix,Lung,Macrophage,Pancreas,Skin,Spleen,

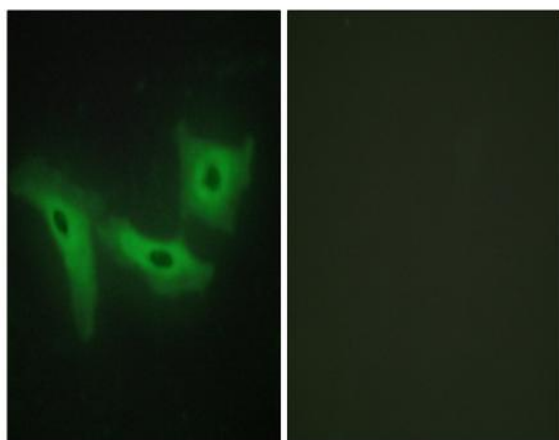
**Sort :** 9259

**No4 :** 1

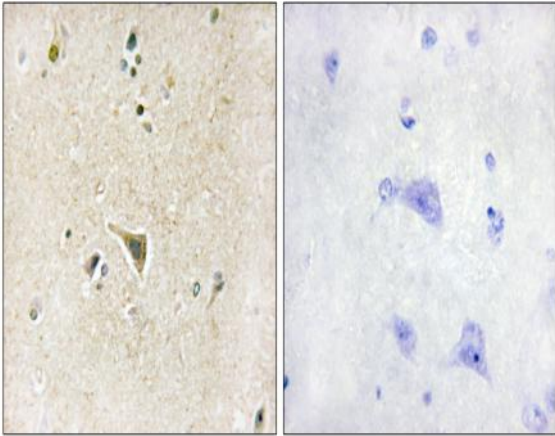
**Host :** Rabbit

**Modifications :** Unmodified

## Products Images



Immunofluorescence analysis of HeLa cells, using LRRK1 Antibody. The picture on the right is blocked with the synthesized peptide.



Immunohistochemistry analysis of paraffin-embedded human brain tissue, using LRRK1 Antibody. The picture on the right is blocked with the synthesized peptide.