

## LPD lipase Polyclonal Antibody

<b>Catalog No :</b>	YT2586
<b>Reactivity :</b>	Human
<b>Applications :</b>	WB;IHC;IF;ELISA
<b>Target :</b>	LPD lipase
<b>Gene Name :</b>	LIPI
<b>Protein Name :</b>	Lipase member I
<b>Human Gene Id :</b>	149998
<b>Human Swiss Prot No :</b>	Q6XZB0
<b>Immunogen :</b>	The antiserum was produced against synthesized peptide derived from human LIPI. AA range:289-338
<b>Specificity :</b>	LPD lipase Polyclonal Antibody detects endogenous levels of LPD lipase protein.
<b>Formulation :</b>	Liquid in PBS containing 50% glycerol, 0.5% BSA and 0.02% sodium azide.
<b>Source :</b>	Polyclonal, Rabbit,IgG
<b>Dilution :</b>	WB 1:500 - 1:2000. IHC 1:100 - 1:300. ELISA: 1:10000.. IF 1:50-200
<b>Purification :</b>	The antibody was affinity-purified from rabbit antiserum by affinity-chromatography using epitope-specific immunogen.
<b>Concentration :</b>	1 mg/ml
<b>Storage Stability :</b>	-15°C to -25°C/1 year(Do not lower than -25°C)
<b>Observed Band :</b>	53kD
<b>Background :</b>	The protein encoded by this gene is a phospholipase that hydrolyzes

phosphatidic acid to produce lysophosphatidic acid. Defects in this gene are a cause of susceptibility to familial hypertriglyceridemia. This gene is also expressed at high levels in Ewing family tumor cells. Alternative splicing results in multiple transcript variants. [provided by RefSeq, Dec 2014],

**Function :**

disease:Defects in LIPI may be a cause of susceptibility to familial hypertriglyceridemia [MIM:145750]. Familial hypertriglyceridemia is a common inherited disorder in which the concentration of very low density lipoprotein (VLDL) is elevated in the plasma. This leads to increased risk of heart disease, obesity, and pancreatitis.,enzyme regulation:Inhibited by sodium vanadate.,function:Hydrolyzes specifically phosphatidic acid (PA) to produce lysophosphatidic acid (LPA).,PTM:Phosphorylated upon DNA damage, probably by ATM or ATR.,similarity:Belongs to the AB hydrolase superfamily. Lipase family.,subcellular location:May associate with lipid draft.,subunit:Interacts with heparin with a high affinity.,tissue specificity:Expressed in testis. Expressed exclusively at the connecting piece of the sperm.,

**Subcellular Location :**

[Isoform 1]: Cell membrane . Secreted . May associate with lipid draft. .; [Isoform 2]: Cell membrane . Secreted . May associate with lipid draft. .

**Expression :**

Expressed in testis. Expressed exclusively at the connecting piece of the sperm.

**Sort :**

9231

**No4 :**

1

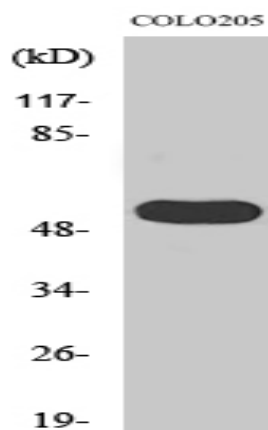
**Host :**

Rabbit

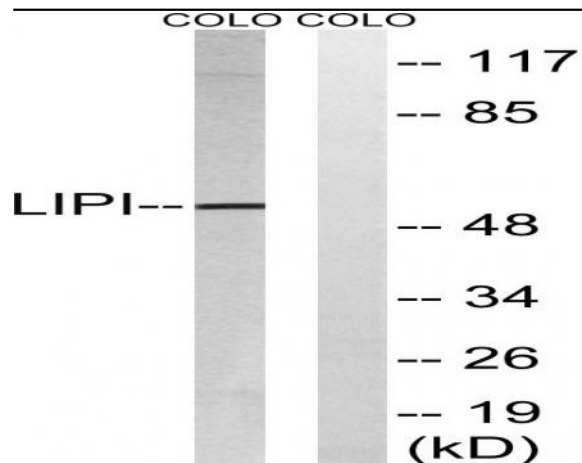
**Modifications :**

Unmodified

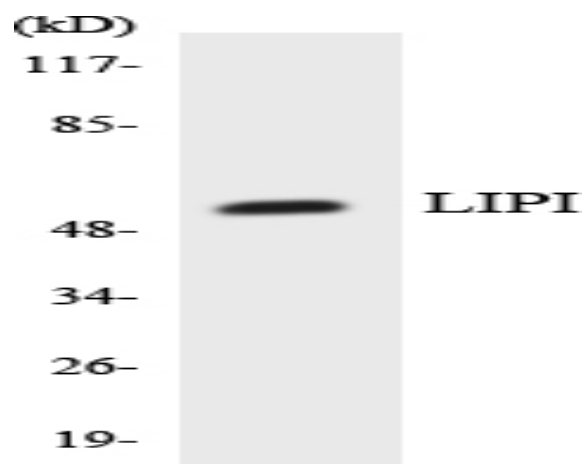
## Products Images



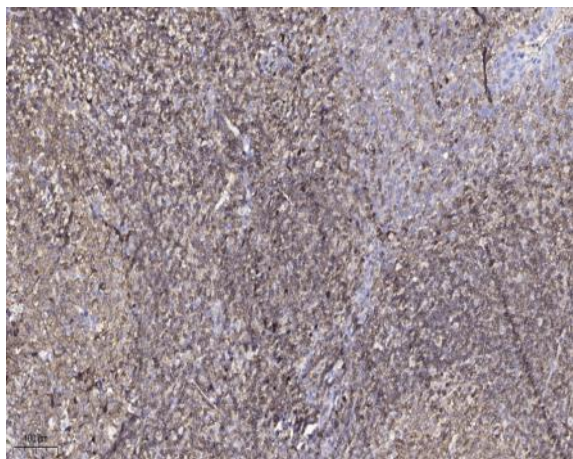
Western Blot analysis of various cells using LPD lipase Polyclonal Antibody



Western blot analysis of lysates from COLO cells, using LIPI Antibody. The lane on the right is blocked with the synthesized peptide.



Western blot analysis of the lysates from HepG2 cells using LIPI antibody.



Immunohistochemical analysis of paraffin-embedded human tonsil. 1, Antibody was diluted at 1:200(4° overnight). 2, Tris-EDTA,pH9.0 was used for antigen retrieval. 3,Secondary antibody was diluted at 1:200(room temperature, 45min).