

MRGX3 Polyclonal Antibody

Catalog No :	YT2836
Reactivity :	Human;Rat;Mouse;
Applications :	WB;ELISA;IHC
Target :	MRGX3
Gene Name :	MRGPRX3
Protein Name :	Mas-related G-protein coupled receptor member X3
Human Gene Id :	117195
Human Swiss Prot No :	Q96LB0
Immunogen :	The antiserum was produced against synthesized peptide derived from human MRGX3. AA range:99-148
Specificity :	MRGX3 Polyclonal Antibody detects endogenous levels of MRGX3 protein.
Formulation :	Liquid in PBS containing 50% glycerol, 0.5% BSA and 0.02% sodium azide.
Source :	Polyclonal, Rabbit,IgG
Dilution :	WB 1:500-2000;IHC 1:50-300; ELISA 2000-20000
Purification :	The antibody was affinity-purified from rabbit antiserum by affinity-chromatography using epitope-specific immunogen.
Concentration :	1 mg/ml
Storage Stability :	-15°C to -25°C/1 year(Do not lower than -25°C)
Observed Band :	34kD
Background :	This gene encodes a member of the mas-related/sensory neuron specific subfamily of G protein coupled receptors. The encoded protein may be involved in

sensory neuron regulation and in the modulation of pain. [provided by RefSeq, Oct 2009],

Function :

function:Orphan receptor. Probably involved in the function of nociceptive neurons. May regulate nociceptor function and/or development, including the sensation or modulation of pain. Potently activated by enkephalins.,similarity:Belongs to the G-protein coupled receptor 1 family. Mas subfamily.,tissue specificity:Uniquely localized in a subset of small dorsal root and trigeminal sensory neurons.,

Subcellular Location :

Cell membrane; Multi-pass membrane protein.

Expression :

Uniquely localized in a subset of small dorsal root and trigeminal sensory neurons.

Sort :

10213

No4 :

1

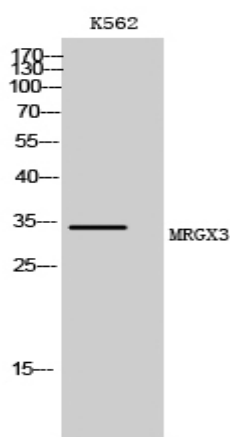
Host :

Rabbit

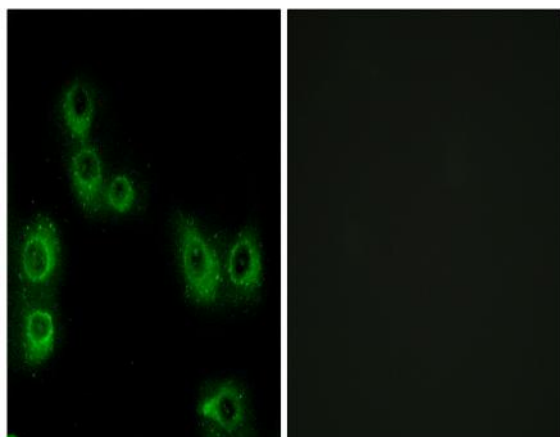
Modifications :

Unmodified

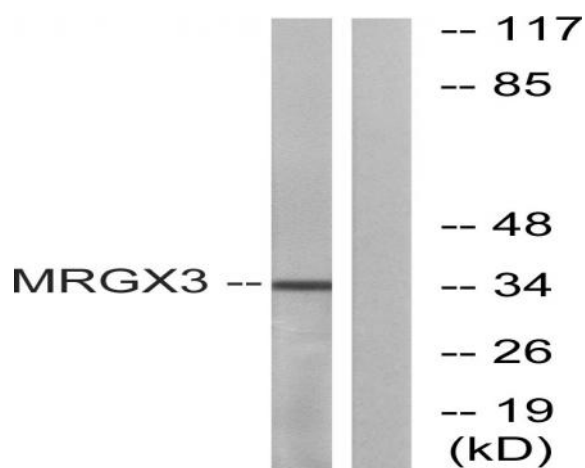
Products Images



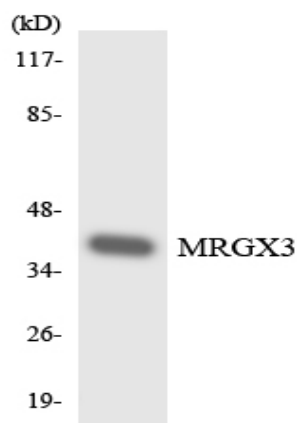
Western Blot analysis of K562 cells using MRGX3 Polyclonal Antibody



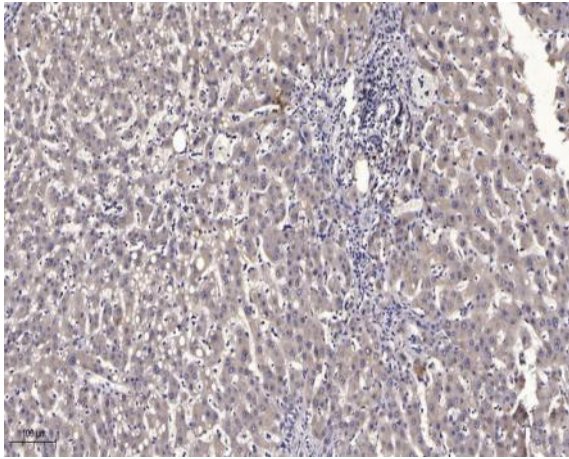
Immunofluorescence analysis of MCF7 cells, using MRGX3 Antibody. The picture on the right is blocked with the synthesized peptide.



Western blot analysis of lysates from K562 cells, using MRGX3 Antibody. The lane on the right is blocked with the synthesized peptide.



Western blot analysis of the lysates from 293 cells using MRGX3 antibody.



Immunohistochemical analysis of paraffin-embedded human liver cancer. 1, Antibody was diluted at 1:200(4° overnight). 2, Tris-EDTA,pH9.0 was used for antigen retrieval. 3,Secondary antibody was diluted at 1:200(room temperature, 45min).